



- Lathe Machine Accessories
- Milling Machine Accessories
- Vices & Work Holding
- Measuring Tools & Equipments
- Jewellery & Watch Making
- DIY Tools (General Workshop Tools)
- Best Sellers-Best Combos
- Indexable Tools



Quality Without Compromise

[www.assortsmachinetools.com](http://www.assortsmachinetools.com)



# Introduction

QUALITY WITHOUT COMPROMISE



Under the guidance of Sh. Suresh Chandra Gupta, the company was started in 1975 with a small set up to start manufacturing the American type Turning and Parting Tool Holders to supply to the people exporting it in their name from India. Today after around four decades years of Manufacturing experience & with his 2nd generation in business, WE are one of the leading Manufacturer-Exporter from India of large variety of **Machine Tools Accessories for Hobby Machinists, Model Makers, Wood Workers, Carpenters & Industrial applications** supplying to the various renowned retailers of Europe, USA, Asia & Other parts of the Globe.

With the help of our well developed production & tool room facilities, and by the ardent efforts of our experienced team who possess sound knowledge & experience of the industry, have enabled us in becoming one of the most reliable name in the market today. The company's capabilities of manufacturing CUSTOM DESIGNED Items as per the customer's specification has made ASSORTS Machine Tools Company, a trusted source for a wide & comprehensive range of Precision Tools of International Quality Standards at competitive prices.

Our main Product line range includes Lathe's Quick Change Tool Posts, Lathe Parting & Turning Tool Holders, Rotary Tables & Its accessories Like Clamp Kits, Dividing plates, Tailstocks, ER Collets Adaptors & Small Chucks with Back Plates, Knurling Tools, Tailstock, tapping attachments, Cutting tools, Taps & Dies, Lathe Alignment Test Bars, Vee Blocks, Revolving Centers, Vertical Milling Slides, Boring Heads, Fly Cutters, Arbors, Sleeves, Precision Vises For Milling, Drilling & Grinding & Bench Vises, HSS Lathe Form Tools & Carbide Brazed Tools Set, Lathe Chucks, Angle Plates, Surface Inspection Plates, Various DIY Hand tools, Punches, Jewelry Tools, Indexable Tools, Measuring Tool & **Many More.....**

# LATHE MACHINE ACCESSORIES

## This Section Includes:

- Collet Fixture
- Knurling Tools
- Lathe Alignment Test Bar
- Lathe Chucks & Adaptors
- Lathe Cutting Tools
- Lathe Dogs
- Lathe Tool Holders
- Lathe Vertical Milling Slides
- Lathes Tailstock Attachments
- Quick Change Tool Post
- Revolving Centre





## LATHE MACHINE ACCESSORIES

### 5 C Collet Fixture

Item Code: ALCF-5C



- Precision made & designed for 5 C collets collet for a capacity 1-1/8" round.
- Vertical Height: 4-1/8" (105 mm)
- Horizontal Height: 3-3/4" (95 mm)
- Width of the Wall: 5" (127 mm)
- Can be mounted both Horizontally & Vertically.

### 5C Collet Fixture New

Item Code: ALCF-5CN

- Another 5C collet for secure & accurate milling, tapping, drilling, reaming, grinding & slotting etc.
- Mounts on any angle plate, for vertical & Horizontal use.
- Uses any standard 5C collet for a capacity 1-1/8" round.
- Base Size: 4-1/4" x 5" (108 mm x 127 mm)
- Height: 4-1/4" (108 mm)



### V-Clamp Type Knurling Tool for Quick Change Tool Post

Item Code: ALVKT-520



- Sturdy V clamp type knurling tool.
- Can be clamped in Standard Holder of the Quick change tool post on the lathe.Tool
- Capacity ranges 5 -20mm
- Holder size : 3/8" x 3/8" x 2-1/4"
- Paired with diamond kurls - left hand and right hand.
- Knurl size - 3/4" x 3/8" x 1/4" bore.



## Spring Loaded Clamp Type Knurling Tool 2 Inches Capacity

Item Code: ALSCKT-50



- Adjustable Spring loaded clamp type knurling tool.
- Maximum Capacity- 2" ( 50 mm)
- Shank size 5/16" ( 8 mm)
- Knurl Dimensions- 3/4" x 3/8" x 1/4"

## Six Knurls Revolving Knurling Tool

Item Code:ALRHKT-XX

- 6 Wheel multi Head lathe Knurling Tool
- Disk can be rotated to give different patterns.



Prod. Code	Holder Size (Inches)	Holder Size (Inches)	Knurl Dim. (Inches)	Knurl Dim. (Inches)
ALRHKT-01	5/16 x 3/4 x 5	8 x 19 x 127	5/8 x 5/16 x 7/32	16 x 7.9 x 5.5
ALRHKT-02	3/8 x 7/8 x 5-1/2	9.5 x 22 x 140	5/8 x 5/16 x 7/32	16 x 7.9 x 5.5
ALRHKT-03	1/2 x 1-1/8 x 6-1/2	12.7 x 28 x 165	3/4 x 3/8 x 1/4	19 x 9.5 x 6.35
ALRHKT-04	5/8 x 1-3/8 x 7-1/2	16 x 35 x 190	3/4 x 3/8 x 1/4	19 x 9.5 x 6.35
ALRHKT-05	1 x 1 x 6-1/2	25 x 25 x 165	3/4 x 3/8 x 1/4	19 x 9.5 x 6.35
ALRHKT-06	1/2 x 7/8 x 6-1/2	12.7 x 22 x 165	3/4 x 3/8 x 1/4	19 x 9.5 x 6.35

## Pivot Head Type Knurling Tool

Item Code:ALPHKT-XXX



- Raises an angled ridges in a diamond pattern on any workpiece for a decorative finish or slip proof grip.

Prod. Code	Holder Size (Inches)	Holder Size (Inches)	Knurl Dim. (Inches)	Knurl Dim. (Inches)
ALPHKT-115	1/2 x 1/2 x 4-1/2	12.7 x 12.7 x 115	3/4 x 3/8 x 1/4	19 x 9.52 x 6.35
ALPHKT-127	1/2 x 1/2 x 5	12.7 x 12.7 x 127	3/4 x 1/4 x 1/4	19 x 6.35 x 6.35

## LATHE MACHINE ACCESSORIES

### Single Knurl Tool

Item Code:ALSKT-XXX



- The simplest available & highly usable single knurling Tool in variable shank sizes.

Prod. Code	Holder Size (Inches)	Holder Size (Inches)	Knurl Dim. (Inches)	Knurl Dim. (Inches)
ALSKT-100	1/2 x 1/2 x 4	12.7 x 12.7 x 100	3/4 x 1/4 x 1/4	19 x 6.35 x 6.35
ALSKT-125	3/4 x 3/4 x 5	19 x 19 x 127	3/4 x 3/8 x 1/4	19 x 9.52 x 6.35

### Clamp Type Knurling Tool with knob

Item Code:ALCKKT-XXX



- This design helps reducing the load on the lathe spindle bearings compared to any other standard knurling tool.
- Pressure is applied via the turn screw instead of the lathe cross slide.
- Ideal tool for a small to medium sized lathes. Features medium diamond pattern knurls.



Prod. Code	Holder Size (Inches)	Holder Size (Inches)	Knurl Dim. (Inches)	Knurl Dim. (Inches)	Working Capacity (mm)
ALCKKT-075	5/8 x 3/8 x 3	16 x 9.5 x 75	3/4 x 3/8 x 1/4	19 x 9.5 x 6.35	3-25 mm
ALCKKT-100	3/8 x 3/8 x 5-3/4	9.5 x 9.5 x 145	3/4 x 3/58 x 1/4	19 x 9.5 x 6.35	3-25 mm

### Multi Head Attachment Knurling Tool

Item Code:ALMHKT-XXX



- Multi Head knurling tool holder kit
- Straight & LH, RH Knurl Pair.

Prod. Code	Holder Size (Inches)	Holder Size (Inches)	Knurl Dim. (Inches)	Knurl Dim. (Inches)
ALMHKT-100	3/4" x 3/4" x 4"	19 x 19 x 100 mm	3/4" x 3/8" x 1/4"	19 x 9.5 x 6.35 mm
			3/4" x 1/4" x 1/4"	19 x 9.5 x 6.35 mm



## Special Design High Capacity knurling Tool

Item Code:ALSKT-100



- Designed to have least strain on the light duty lathe s spindle while knurling.
- Pressure adjustment on both arms using fine feed lever.
- Floating Jaws will follow the Work piece and enable knurling to be started in its middle.
- Perfect to make knurls on material like aluminium, Brass where utmost care if required not to tear the material.
- Knurling Capacity Ranges from 0- 4 Inches. (0-100 mm)
- Both Straight as well as Diamond knurls are available.

## Double Ended Knurling Tool

Item Code:ALDKT-02



- Made of Quality Tool Steel
- Knurls are made of EN31 Alloy Steel
- Also Supplied with HSS Knurls on Demand
- Knurls Both Ends Makes It Long Lasting

Prod. Code	Holder Size (Inches)	Holder Size (In mm)	Knurl Dim. (Inches)	Knurl Dim. (In mm)
ALDKT-02	1/2 x 1/2 x 5	12.7 x 12.7 x 125	3/4 x 1/4 x 1/4	19 x 6.35 x 6.35

## Self Adjusting Head Knurling Tool

Item Code:ALSAKT-XXX



Prod. Code	Holder Size (Inches)	Holder Size (Inches)	Knurl Dim. (Inches)	Knurl Dim. (Inches)
ALSAKT-127	5/16 x 3/4 x 5	8 x 19 x 127	5/8 x 5/16 x 7/32	16 x 7.9 x 5.6
ALSAKT-140	3/8 x 7/8 x 5-1/2	9.5 x 22 x 140	5/8 x 5/16 x 7/32	16 x 7.9 x 5.6
ALSKT-165	1/2 x 1-1/8 x 6-1/2	12.7 x 28 x 165	3/4 x 3/8 x 1/4	19 x 9.5 x 6.4
ALSKT-190	5/8 x 1-3/8 x 7-1/2	16 x 35 x 190	3/4 x 3/8 x 1/4	19 x 9.5 x 6.4

## LATHE MACHINE ACCESSORIES

### 6 Wheel Revolving Knurling Tool

Item Code:ALRHKT-6S



- Gives 3 different types diamond knurling pitches by just revolving the head &
- locking it at any one required position with a screw lock.
- Shank Size: 6- 1/2" x 1/2" x 7/8" Shank.
- Fitted with 3 sets of 5/8" x 3/16" x 1/4" Spiral (Right & Left) Coarse, Medium, & fine
- Knurl Wheels.

### Taper & Parallel Test Bars/ Mandrels

Item Code:ALTB-XXX

- Manufactured from high precision alloy steel.
- Heat treated to a hardness of 58 +1-2 HRC.
- Precision ground & inspected for a concentricity within 0.0001" & parallelism.
- Ideal for aligning headstock & tailstock in Lathe Machines.



Prod. Code	Holder Size (Inches)	Holder Size (Inches)	Knurl Dim. (Inches)
ALTB-160	Mt1	6-1/4	160
ALTB-180	Mt2	7	180
ALTB-225	Mt3	9	225
ALTB-275	Mt4	11	11
ALTB-325	Mt5	13	325
ALTB-300.4	ISO-40	12	300
ALTB-300.5	ISO-5	12	300

### HSS Lathe From Tool Set - 8 Pcs

Item Code: ALHFT-XX



- Manufactured from High Quality HSS material.
- Fully hardened & ground. They retain their hardness even at high temperatures.
- Set Includes Following Types of Tools:-

1. Left hand turning tool
2. Right hand turning tool
3. Straight finishing (60/55 Deg)
4. Corner tool
5. Parting tool
6. Boring tool
7. Threading (60/55 Deg)
8. Internal threading(60/ 55 Deg)

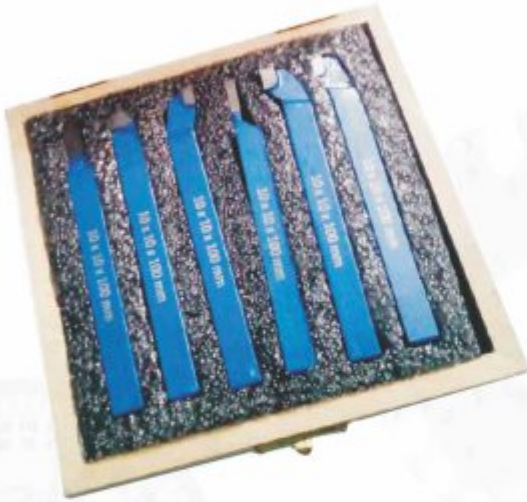
**Set is supplied in a beautiful High quality Wooden Box**

Prod. Code	Shank Size
ALHFT-018I	1/8" Sq.
ALHFT-014I	1/4" Sq.
ALHFT-516I	5/16" Sq.
ALHFT-038I	3/8" Sq.
ALHFT-012I	1/2" Sq.
ALHFT-003M	3 mm Sq.
ALHFT-006M	6 mm Sq.
ALHFT-008M	8 mm Sq.
ALHFT-010M	10 mm Sq.
ALHFT-012M	12 mm Sq.
ALHFT-016M	16 mm Sq.



## Carbide Brazed Lathe Tool Set

Item Code:ALCBN6-XX



- A set of 6 carbide brazed tool set for complete lathe job.
- Supplied in a high quality wooden box case with styrofoam packaging.
- Individual pieces are marked with lazer machine with their dimesnions & design.
- Includes 1 LH & 1 RH Turning, 1 Parting, 1 Roughing, 1 Straight Facing & 1 Threading tool in the set

Prod. Code	Shank Size
ALCBN6-66	6 mm x 6 mm
ALCBN6-88	8 mm x 8 mm
ALCBN6-10	10 mm x 10 mm
ALCBN6-12	12 mm x 12 mm

## Lathe Parting Off Tool Set with HSS Parting Blade

Item Code:ALPTH-3.XX

- Parting off Tool Holder with HSS M-2 Grade Parting off Blade.
- Dimension of the Parting off Tool Holders in the set with their respective Blade sizes are as below :



Prod. Code	Holder Size	Blade Size
ALPTH-3.66	6 x 6 x 80 mm	1.5 x 6 x 63 mm
ALPTH-3.88	8 x 8 x 80 mm	1.5 x 6 x 63 mm
ALPTH-3.11	10 x 10 x 80 mm	1.5 x 6 x 63 mm

## HSS Boring Bar Set

Item Code:ALBBS-04.X



- Set of 4 Boring Bars manufactured from High Speed Steel- M2 grade.
- Heat treated for Hardness~ 60+/-2 HRC.
- Black Epoxy finish on the shank.

Prod. Code	Shank Dia.	Length
ALBBS-04.1	3/16"	4.5"
ALBBS-04.2	1/4"	5"
ALBBS-04.3	5/16"	6"
ALBBS-04.4	3/8"	7"
ALBBS-04.S	Set of above 4 Boring Bars	

## LATHE MACHINE ACCESSORIES

### HSS Lathe Tool Set of 6 Pcs

Item Code:ALHLT-06



- Manufactured from High Quality HSS material M-2 Grade
- Fully hardened to achieve 60+/-2 HRC & ground
- Set Includes Following Types of Tools

- 1 1 Pc. Boring Tool
- 2 1 Pc. Threading Tool 55 Deg.
- 3 1 Pc. Finishing Tool
- 4 1 Pc. Roughing Turning Tool
- 5 1 Pc. Parting Tool
- 6 1 Pc. External 40 Deg Threading Tool.

Set is supplied in a beautiful High quality Wooden Box.

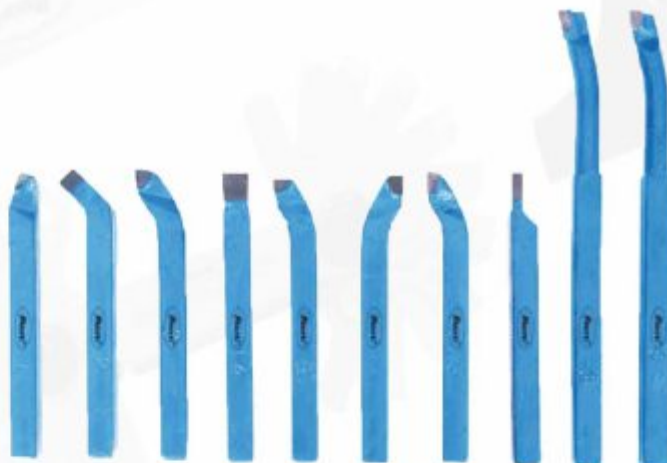
### Carbide Brazed Lathe Tool Set -10 Pcs

Item Code:ALCBT6-XX

- 10 Piece Carbide Brazed Tools Set for complete lathe operation.
- Perfect to use on small hobbyists lathe.
- The Set Includes Following;

- 2 Boring Tools
- 1 Parting Tool
- 1 Facing Tool
- 6 Pcs. of RH & LH Turning Tools.

- Shank Size available : 8 mm, 10 mm & 12 mm Sq.



### HSS Internal threading & Boring Tool Set -3 Piece.

Item Code:ALBTT-03.X



- A set of 3 Pieces HSS -M2 grade material threading & Boring bars.
- Hardness: 60+/-2 HRC
- Includes a Tool Holder as well

Prod. Code	Diameter	Length	Set Incl.
ALBTT-03.6	6 mm	95 mm	1 Boring, 2
ALBTT-03.8	8 mm	140 mm	Threading & 1
ALBTT-03.I	5/16"	140 mm	Holder



## Boring Bar with Holder

Item Code:ALBBH-2XX



- Double ended one piece Boring bars have 90 & 45 degree square ends.
- Made from High quality tool steel.
- Supplied with Allen key to Loosen/ tighten the Tool bit.
- Set is supplied with Tool bit upon customer's demand.
- Epoxy Black Finish.

Product Code	Bar Size		Holder Size		Suitable Bit Size (In Inches)
	Diameter	Length	Length	Square	
ALBBH-201	3/8"	4-1/2"	2-1/4"	1/2"	1/8"
ALBBH-202	7/16"	5-1/4"	2-1/2"	1/2"	3/16"
ALBBH-203	9/16"	6-3/4"	3"	5/8"	1/4"
ALBBH-204	3/4"	9-1/4"	3-3/4"	7/8"	5/16"
ALBBH-205	7/8"	11-1/2"	4-1/2"	1-1/4"	3/8"
ALBBH-206	1-1/8"	12-3/4"	4-1/2"	1-3/8"	7/16"
ALBBH-207	1-3/16"	13-3/4"	5"	1-5/8"	1/2"
ALBBH-208	1-1/4"	18"	7"	1-3/4"	5/8"
ALBBH-209	1-3/8"	20"	8"	1-7/8"	3/4"
ALBBH-210	1-1/2"	22"	9"	2"	7/8"
ALBBH-211	1-3/4"	24"	10"	2-1/2"	1"

## Carbide Brazed Turning & Boring Lathe Tool Set

Item Code:ALCLT-06.XX

- A set of 6 carbide brazed tool set for threading, turning & Boring jobs.
- Supplied in a high quality wooden box case with styrofoam packaging.
- Individual pieces are marked with lazer machine with their dimesnions & design.
- The set includes 1 Turning, 2 Outer threading, 2 Internal threading & 1 Boring Tool.



Prod. Code	Shank Dimensions
ALCLT-06.66	6 mm x 6 mm Sq.
ALCLT-06.88	8 mm x 8 mm Sq.
ALCLT-06.10	10 mm x 10 mm Sq.
ALCLT-06.12	12 mm x 12 mm Sq.

## HSS Threading Tool Double Ended 2 Pc. Set

Item Code:ALHDE-XX



- A set of double ended threaded tool.
- Manufactured from High speed steel.
- Fully hardened & Ground.
- Double Ended 55 & 60 Degrees.

Prod. Code	Shank Size
ALHDE-44	4 mm Sq.
ALHDE-55	5 mm Sq.
ALHDE-66	6 mm Sq.
ALHDE-88	8 mm Sq.
ALHDE-11	10 mm Sq.

## LATHE MACHINE ACCESSORIES

### HSS Threading-Boring Tool Set With Holder For Lathe Machines

Item Code : ALTBTS-XX

- Quality Set Of 5 Pcs - Hss (m2 Grade Steel) Including Internal Boring & threading Tools
- Tools Are Hardened To 58+1-2 Hrc & Shanks Ground Precisely
- 3 Pcs X Boring Tools & 1 Pc. Each Of 55 & 60 Degree Internal threading tool in cluded in the set.



Item Code	hank Size (Dia x Length)	Boring Tool
ALTBTS-06	6 mm x 95 mm	2.5, 3.0, 4.0 mm
ALTBTS-08	8 mm x 95 mm	3.5, 4.5, 5.5 mm
ALTBTS-10	10 mm x 120 mm	5.5, 6.5, 7.0 mm
ALTBTS-12	10 mm x 120 mm	7.5, 8.5, 9.5 mm

### Lathe Dogs

ALSLD-XX & ALBLD-XX

- High grade caste Iron
- Securely mount workpiece with square head screw
- Used for driving a work-piece in the lathe when turning between centres

Prod. Code (Straight Type)	Product Code (Bent Type)	Capacity (Inch)	Capacity (mm)
ALSLD - 01	ALBLD - 01	1/2"	12.7
ALSLD - 02	ALBLD - 02	3/4"	19.0
ALSLD - 03	ALBLD - 03	1"	25.4
ALSLD - 04	ALBLD - 04	1-1/4"	31.8
ALSLD - 05	ALBLD - 05	1-1/2"	38.1
ALSLD - 06	ALBLD - 06	1-3/4"	44.5
ALSLD - 07	ALBLD - 07	2"	50.8
ALSLD - 08	ALSLD - 08	2-1/2"	63.5



### Parting Off Tool with HSS Blade

Item Code:ALPTH-XX

ASSORTS's  
BEST SELLER

- These parting straight shank tools are heat treated and machined to precise tolerance, & comes with holder, blade & a wrench.



Prod. Code	Holder Size (In Inches)	Blade Size (In Inches)
ALPTH-19	1/2" Width Holder	1/16 x 5/16 x 3-1/2
ALPTH-20	3/8 x 31/32 x 5	3/32 x 5/8
ALPTH-21	7/8 x 1/2 x 6	1/8 x 3/4 x 6
ALPTH-22	1-3/8 x 5/8 x 7	1/8 x 7/8 x 6
ALPTH-23	3/4 x 1-5/8 x 8	3/16 x 1
ALPTH-24	3/16 x 1-3/4 x 9	3/16 x 1-1/8



## Turning Tool Holders (American Style)

Item Code:ALTTH-XXX.X



Prod. Code Left	Prod. Code Right	Prod. Code Straight	Holder Size (Inches)	Bit Size (Inches)
ALTTH-114L	ALTTH-114R	ALTTH-114S	5/16 x 1/2 x 4	3/16
ALTTH-115L	ALTTH-115R	ALTTH-115S	5/16 x 3/4 x 4-1/2	3/16
ALTTH-116L	ALTTH-116R	ALTTH-116S	3/8 x 7/8 x 5	1/4
ALTTH-117L	ALTTH-117R	ALTTH-117S	1/2 x 1-1/8 x 6	5/16
ALTTH-118L	ALTTH-118R	ALTTH-118S	5/8 x 1-3/8 x 7	3/8
ALTTH-119L	ALTTH-119R	ALTTH-119S	3/4 x 1-5/8 x 8	7/16
ALTTH-120L	ALTTH-120R	ALTTH-120S	7/8 x 1-3/4 x 9	1/2
ALTTH-121L	ALTTH-121R	ALTTH-121S	1 x 2 x 11	5/8
ALTTH-122L	ALTTH-122R	ALTTH-122S	1-1/4 x 2-1/4 x 13	3/4

## Ball Turning Attachment

Item Code:ALBTA-50

- Fits straightaway on the cross slide of the lathe.
- Has a indexable CCMT insert tip with 3 cutting edges.
- Adjustable head for various sizes balls.
- The current design suits small lathe machine f 3-1/2" centre height which can be increased by introducing packing to raise further for larger machines.
- We have pasted a video from you-tube as a illustration of this product. This video is not our property and we have taken this for reference of our customers.



## Lathe Machine Attachment- Turns Round Concave and Convex Metal-Wood Ball Quickly DIY Tool-Suits Myford & Similar Lathes

Item Code : ALDBT-50

- Center Height is 52 - 52.5 mm which is pre-designed and prefixed for Myford Lathe Machines.
- Smooth Bearing Rotation Unlike Other Similar Models
- Can fit to Larger Machines by using Packing to Adjust Center Height
- Can turn up-to a 50 mm diameter Metal or Wood Ball.
- Can be Adjusted for Various Sizes of Balls.
- 2 Pcs x 3 Sided Indexable TNMG16 Tips Design For Internal & External Turning



## LATHE MACHINE ACCESSORIES

### Vertical Slide for Lathe- Fixed

Item Code:ALVS-45



ASSORTS's  
BEST SELLER

- This is an accessory item compatible for Myford M17 Lathes and other smaller mini lathes.
- Table size is 125 mm x 100 mm.
- It has a reading bush at the handle for calculating accurate travel of the bed and hence a precise job.
- The thread comes both in metric as well as Imperial standard as per customer's market requirements.

### Mini Vertical Slide

Item Code ALMVS-95



ASSORTS's  
BEST SELLER

- This small vertical slide is designed for instant milling on Lathe machines.
- Bed Dimensions: 100 x 150 mm Tee- Slot width 9.5 mm
- Maximum Jaw Opening : 70 mm

### Tool Post Vertical Small Milling Slide for Lathe Machine

Item Code:ALTPMVS-95



- Manufactured from High Quality Seasoned Casting.
- Small Vertical Milling Slide for Bench Small Lathes
- Can be fitted to Emco, Myford, Warco, Sieg C3 Small Lathes with little modification/ machining Suitable for Bench Lathes upto 150 mm Swing
- SMALL GIB EXTENSION TO HOLD IN THE QUICK CHANGE TOOL POST'S OF THE LATHE. NO NEED TO REMOVE THE TOOL POST & MOUNT IT ON THE CROSS SLIDE.
- Sliding Table - 90 x 50mm
- Vertical Travel 40 mm
- Base Dimension - 50 x 55 mm
- Dial Graduated to 0 - 50
- Maximum Jaw opening is 70 mm- Jaws are Adjustable
- Fixing hole centers :22.50 mm at 90° to slide face

\* The Base Body has an Extended Gib that helps the user to clamp this milling slide through this gib without actually removing the Tool Post assembly from the Cross Slide of your Lathe Machine. At the same time, this can still be mounted through the counter drills in the base with the cross slide of the machine, (\* In case the end user do not wish to hold it in the Tool Post's Holder)



### Swivel Vertical Slide

Item Code: ALSVS-45



- This is an accessory item compatible for Myford ML7 Lathes and other smaller mini lathes.
- Bed & Table base both can swivel.
- Table size is 125 mm x 100 mm.
- It has a reading bush at the handle for calculating accurate travel of the bed and hence a precise job. The total travel of the slide is 80mm.
- The thread comes both in metric as well as Imperial standard as per customer's market requirements.

### Fixed Vertical Slide-New Design

Item Code:ALVS-N45



- This is an accessory item compatible for Myford ML7 Lathes and other smaller mini lathes.
- Table size is 125 mm x 100 mm.
- It has a reading bush at the handle for calculating accurate travel of the bed and hence a precise job.
- Clamping jobs Max job size of 3" that can be hold.
- The thread comes both in metric as well as Imperial standard as per customer's market requirements.

## LATHE MACHINE ACCESSORIES

### New Supreme Tap & Die Holder Set

Item Code:ALTDH-N5



- Can be called as a complete threading solution.
- Can be used on Lathe, vertical milling & drill machines.
- Available in MT1, MT2, & MT3 Hardened & Ground shanks.
- Supplied with 3 fixing screws aligned with tapped holes in the Holders & body for secure attachment.
- Comes with 4 Die holders of size 1-3/16", 1", 1-5/16" & 1-1/2" & 1 Drill chuck holder of thread size 3/8" x 24 TPI

### Tailstock Die Holder Set- Metric

Item Code:ALTDH-06M

- Excellent threading solution for Metric Die Sizes.
- Shanks are Hardened & Ground
- Available in MT1, MT2 & MT3 Shanks
- It can hold Die Sizes of 16 mm, 20 mm, 25 mm, 30 mm and 38 mm.



### Lathe Tailstock Die Holder Set (Floating Type)

Item Code:ALTDH-04

**ASSORTS'S  
BEST SELLER**



- Shank is hardened & ground and available in Morse Tapered 1 & 2 to fit into the Lathe Tailstock.
- The set includes 4 different sizes of the Die Holders, interchangeable with same shank.
- Provided with a pin that helps locking the die holder and allows about 1.5 inches travel.
- Shipped in a wooden box packaging in a styrofoam casing.
- Both Metric and Imperial size holders are available.
- Die Holder Size 13/16", 1", 1-5/16" & 1-1/2"



### Lathe Tailstock Die Holder Set

Item Code:ALTDH-04.N



- An excellent threading solution available in both Metric & Imperial Die sizes.
- Shanks are Hardened & Ground.
- Available in MT1, MT2 & MT3 shanks.
- Can hold Die sizes of 13/16", 1", 1-5/16" & 1-1/2".
- Holders can be interchanged very easily.

### Precision Lathe Tailstock Imperial Rigid Die Holder for threading Lathe Machine

Item Code: ALRDH-04.N



- Quality threading kit for your lathe machine available in morse taper MT3 shank's tailstock
- Made of quality tool steel. Shanks are precisely ground.
- Much precise and accurate design with option of holding 4 imperial size round threading dies.
- It can hold 13/16", 1-5/16", 1" & 1-1/2" round dies, through 4 holders (2 on each size of the main bodies that floats on the parallel shank). Sizes are laser marked on each holder for easy reference of the end user.
- The morse taper goes inside your lathe's tailstock taper & the body of the holder having threading die floats on the parallel part of the shank while creating threads on the round work piece hold in the lathe machine.

## LATHE MACHINE ACCESSORIES

### Die Stock Holder for Small Mini Lathes

Item Code : AMTDH-1M



- Small Die Stock Holder for 1" OD Dies.
- Can take larger or smaller dies with Adaptors.
- Body of the die holder is knurled, so by gripping body by hand manually and allow Die to start.
- The Die Holder needs to be hold by hand when threading on the lathe.

### Easy Tapping Attachment for Lathe Tailstock

Item Code: ALETA- XMT



- A very versatile & High accuracy tapping attachment for lathe's tailstock.
- Ensures manual control for a straight parallel tapping as the chuck traverses while working
- Available in 2MT and 3MT shanks.
- The front mounting is available in customised thread or taper options basis customer's requirement as per his choice of mounting chuck



## V-Adaptor For Drilling of Round Bar on Lathe Machine

Item Code:ALVA-XXX

**ASSORTS's  
New Development  
EXCLUSIVE**



- Quality V-Adaptor For Lathe's Tailstock for drilling of Round Bar.
- Made of quality Tool Steel.
- Vee is Precisely ground.
- 5 Interchangeable Alloy Steel Hardened Bushes are supplied to adapt different drill sizes & to ensure minimum drill breakage.

Product Code	Morse Taper Shank Size	Head Size of the Vee Adaptor / Diameter	Minimum & Maximum Round Bar's Diameter Holding Capacity	Size of Bush Supplied	OAL (*Overall Body Length)
ALVA-MT1	Morse Taper MT1	50 mm	Minimum-5 mm Minimum-30 mm	4, 6, 10 & 12 mm	95 mm
MT2	Morse Taper MT2	62 mm	Minimum-8 mm Minimum-40 mm	6, 8, 10, 12 14 & 16 mm	120 mm

## Quick Change Tool Post Set-6 Pcs

Item Code:ALQTP-37

**ASSORTS's  
BEST SELLER**



An extreme High Quality Alloy Steel Quick Change Tool Post, all parts hardened & Ground. Comes in a set of 6 units including;

- Main Block size 58 x 58 x 37 mm having 7/16" (11.2 mm) bore.
- 2 Standard Holders,
- 1 Vee (Boring) Holder,
- 1 Parting Holder &
- 1 spanner.

- Capacity of the tool Holders upto 13 mm.
- This fits to all Myford ML7 series & similar Lathe machine, suitable for 90-115 mm Centre Height lathes.

## LATHE MACHINE ACCESSORIES

### Loose Holders for Quick Change Tool Posts

Item Code:ALQCLH-XX



- Loose holders, whether Standard, Boring or Parting type for all our Tool Posts are also available.
- Manufactured from Tool steel & are precisely grounded after heat treatment.
- These are shipped only after being checked their interchangeability with the master block so that
- there are no quality issues when sold loose.

### Quick Change Tool Post Set

Item Code:ALQCTP-51

- Quality Quick Change Tool Post made of Alloy Steel, all Parts are hardened & ground suitable for Lathes of 5"- 6" (125-150 mm) Centre Height. Set comes with below 6 units;

- The Main Block Size is 73 mm (L) x 73 mm (W) x 51 mm (H). The Centre Bore is 5/8" (16 mm), which reduces to 12 mm through the collar on Top.
- 2 Standard Holder of Capacity 16 mm
- 1 Vee (Boring) Holder of Capacity 16 mm
- 1 Parting Holder of capacity 1/8" x 3/4"
- 1 Spanner



### T2 Tool Post Set Block Height 72 mm

Item Code:ALQTP-72



- Quality Quick Change Tool Post made of Alloy Steel, all Parts are hardened & ground.
- Set comes with below 6 units;
  - The Main Block Size 97 x 97 x 72 mm, with centre bore 25.4 mm (1") .
  - 2 Standard Holder of Capacity 22 or 28 mm as per customer's requirements.
  - 1 Vee (Boring) Holder of Capacity same as that of standard holder.
  - 1 Parting Holder. (\*\* ASSORT's Exclusive)
  - 1 Spanner



## Economy Quick Change Tool Post

Item Code: ALETP-90



- Hardened & Ground oxidised Black Finish to support lathe height of 90 mm Set comes with 2 standard holder of 1/2" (12 mm) capacity.
- Block Size - 2-1/4" Length x 2-1/4" Width x 1-1/4", (i.e. 58 mm x 58 mm x 32 mm) CentrBore: 3/8" ( 10mm)

## Mini Lathe Quick Change Tool Post Set

Item Code: ALQTP-39

- Mini Lathe Tool Post Set suitable for 4" (100mm) centre height lathes
- 2-Way Tool Post measures 2.45" Wide x 3.45" long (Incl. Holder) x 1.54" high. (62 mm x 88 mm x 39 mm)
- Set includes 2 standard Holders of capacity 12 mm, 1 Parting & 1 Vee Holder.



## Quick Change Tool Post for CJ18A Series, C2 C3 Mini Model Engineering Lathes

Item Code: AMQCTP-30



- A Quality addition to ASSORTS's range of High Precision Engineering Tools. Our set is Hardened & Ground with Black Epoxy finish unlike other Tool Post's available in the European, UK or USA market.
- Block Dimensions - 50 mm x 50 mm ( & 61.5 mm including Dovetails where the loose Holder is fitted).
- Length with Holder Attached : 76 mm
- Overall Height: 30 mm
- Through Bore in the Block is 10 mm
- Tool Capacity of the Standard Holder is 10 mm
- The complete set comes with 1 Pc. Block, 2 Pcs. loose Standard holders, 1 Pc. Boring (Vee) Holder & a Parting Tool with Blade size 3/32" x 1/2" x 3-1/2" (\*\* Vee & Parting Holders are Exclusive & currently not supplied by other Exporters).
- Compatible with C2 C3 Mini & Similar size Lathes. Also fits to CJ18A series bench Lathes.

## LATHE MACHINE ACCESSORIES

### Quick Change Tool Post Compatible to Mount on Myford & Mini Lathes

Item Code:ALQCTP-ST



- Quality Quick Change Tool Post known as Swiss Type compatible for direct mounting on Myford Lathes
- The Set includes 1 Block, 2 Standard Holders of 12.5 mm capacity & 1 Boring Vee Holder
- When it will be mounted on myford ml/super 7, it will give you a center height of 10 mm . Even it will fit to a
- myford ml 10 model as well but give a 6 mm tool height.
- By doing small modifications, you can fit the same to a mini lathe as well.
- Main block Dimensions: Height 32.5 mm high x 7/16" bore
- Quick and better clamp cam action. Holders can be released by moving the handle.

### Multi Point 7 Tips Revolving Centre

Item Code:ALMRC-07

- This set comes with 7 different tips- 5 live centres, 1 Female Centre, 1 Pipe Centre Tip with an ejecting key.
- Have 3 Bearings
- Made of hardened & ground steel. The tips are also induction hardened.
- Wide application on small mini lathes for hobbyists & modelmakers

Prod. Code	Type of Shank
ALMRC-07.1	MT1
ALMPC-07.2	MT2
ALMPC-07.3	MT3



### Pipe Centers

Item Code:ALPC-XXXX



- These centres are used when you need to spin large diameter of pipe or hollow work.
- Manufactured from heat treated high carbon alloy steel.
- Precision ground, the Head revolves.

Prod. Code	Capacity	Length	Shank Type
ALPC-1980.2	19 mm - 80 mm	135	MT2
ALPC-2095.3	20 mm - 95 mm	170	MT3
ALPC-2650.4	26 mm - 50 mm	200	MT 4



## Standard Point Live Center

Item Code:ALSRC-X



- Manufactured from hardened steel & fully precision ground for accuracy.
- High quality ball bearings & taper bearing absorbs combined radial & thrusts load.
- Guarantees a smooth movement with concentricity  $\pm 0.02$  mm

Prod. Code	Type of Shank	Body Dia (inch)	Body Dia (mm)	OAL (Inch)	OAL (mm)
ALSRC-1	MT1	1-3/4	44	5	125
ALSRC-2	MT2	1-3/4	44	5-3/8	136
ALSRC-3	MT3	2-1/2	63	7-1/2	190
ALSRC-4	MT4	2-1/2	63	8-1/2	216

## Slim Long Body Live Center- High Precision

Item Code:ALSRC-112.X

- Manufactured from high quality tool steel.
- Precision ground. Tip is hardened as well.
- Multi bearing housing for better performance, i.e. Taper Bearing & Roller Bearing.
- Runout is within 20 microns.



Prod. Code	Capacity	Length	Shank Type
ALPC-1980.2	19 mm - 80 mm	135	MT2
ALPC-2095.3	20 mm - 95 mm	170	MT3
ALPC-2650.4	26 mm - 50 mm	200	MT 4

## Lathe Dead Centers

Item Code:ALLDC-XXX



- Manufactured from high carbon steel, fully hardened & precision ground to DIN 806 standards.
- Available in Full and half dead centres with Carbide tips or HSS Tips.
- The carbide /HSS tips are brazed into the socket with a close tolerance for maximum strenght.
- Tip angle is 60 Degrees

## LATHE MACHINE ACCESSORIES

### Mini Revolving Centre with MT0 & MT1 shanks

Item Code:ALMRC-MTX

- Quality Mini revolving centres for your lathe machines.
- Available in 0MT & 1MT precisely Ground shanks
- Body Diameter is 23 mm

Codes	Shanks	Body Diameter
ALMRC-MT0	MT0 Shank	23 mm
ALMRC-MT1MT1	Shank	23 mm



### Mini Lathe Live Revolving Centre for Peatol & Pultra Lathes

Item Code:ALMRC-P23

- Precision Small Live Revolving Centre with shank that suits Pultra & Peatol lathe machines,
- Small body diameter of 23 mm.
- Quality Bearings for smooth & accurate performance.
- Overall body Length 60 mm



### Revolving Tailstock Chuck Adaptor for Boxford & Myford Lathe Machines

Item Code:ALNRC-XXX

**ASSORTS'S  
BEST SELLER**



- Quality Arbors in various Morse Taper Shanks supplied with small Chucks for milling machine, lathe, drilling machine, wood working machine
- Arbors are made of quality tool steel & are hardened-ground.
- Small Chuck Body is of Cast Iron & Jaws are made of Tool Steel.
- Various morse tapers like MT1,2,3 & 4 with mounting threads M12 x 1, M14 x 1 & self centering & Independent chucks options of 50 mm, 65 mm and 70 mm are being offered.

Item Code	Nose Thread	Body Diameter	OAL (mm)
ALNRC-Boxford	1-1/2" x 8 TPI	44.5 mm	160 mm
ALNRC-Myford	1-1/8" x 12 TPI	44.5 mm	160 mm



## Standard Point Triple Bearing Premium Revolving Center

Item Code:ALSRC-P.XX

**ASSORTS's  
BEST SELLER**



- Manufactured from hardened tool steel & fully precision ground for accuracy.
- High quality ball bearings & taper bearing absorbs combined radial & thrusts load , guarantees smooth rotation.

Prod. Code	Type of Shank	Body Dia (Inch)	Body Dia (mm)	OAL (Inch)	OAL (mm)
ALSRC-P.MT1	MT 1	1-3/4	44	5	125
ALSRC-P.MT2	MT 2	2	50	6-1/8	155
ALSRC-P.MT3	MT 3	2	50	6-1/8	155
ALSRC-P.MT4	MT 4	2-1/2	63	6-1/2	216

## Toolmakers Surface Marking Gauge

Item Code:ALSG-XXXX



- Fully Hardened & Ground Base that serves as a perfect base or a reference surface.
- The Spindle & Scriber are adjustable which can be rigidly secured at any position.
- The Vee groove on the base allows it to be used on a either a curved or a cylindrical surface.

## Revolving Centre MT2 shank with 3 Jaw 50 mm Chuck mounting for Lathes Tailstock

Item Code : ALRC2C-50.3



- A very versatile & High accuracy tapping attachment for lathe's tailstock.
- Ensures manual control for a straight parallel tapping as the chuck traverses while working
- Available in 2MT and 3MT shanks.
- The front mounting is available in customised thread or taper options basis customer's requirement as per his choice of mounting chuck

## LATHE MACHINE ACCESSORIES

### Sensitive Drill Attachment

Item Code:ALSDA-XX



- Developed by ASSORTS team & is exclusively available to us.
- As the name suggests, designed & developed for holding and working with fine drills. The manual control on the drilling force helps reducing the breakage in fine holes with high accuracy.
- Can fit to any lathe's tailstock and is available in 2 & 3 Morse Taper.
- The Front mounting can be provided by us with Taper or Thread for chuck mounting as required by any customer depending on his market needs.
- Shank is precisely ground.

Prod. Code	Shank Morse Taper	Mounting For Chucks
ALSDA-2M	2 MT	Available in BXX...JTX,,, or Any
ALSDA-3M	3 MT	Thread (Metric Or Imperial)

### Taper Turning Attachment

Item Code:ALTTA-XX

- One more item, an exclusive development by ASSORTS team and is available exclusive with us.
- Much easier for doing a taper turning job rather than going an old traditional way of offsetting the Tailstock.
- The side screws are provided for easy and fine adjustments upto 6 Degree Left & Right.
- Easily fits to a lathe Tailstock having 2 or 3 Morse Taper.
- Shanks is precisely ground.



Prod. Code	Shank Taper
ALTTA- 2M	2 MT
ALTTA- 3M	3 MT

### New Improved Taper Turning attachment with Revolving Center for Lathe Machine

Item Code:ALNTT-RC



- A New Much Improved And Precise Quality Of Taper Turning Attachment Than Our Previous Model.
- Gives You The Freedom From Old Traditional Method Of Off-setting The Tailstock Of Your Lathe , When You Wanted To Do The Metal Turning In A Taper Profile.
- It Has A Double Bearing Revolving Live Center With Hardened Point
- Unlike Our Old Previous Design, This Attachment Has A Much Better Control , Precision And Quality. Comes In 2mt Shanks
- Slide Can Be Shifted 25 Mm Left & Right . 1 Handle Rotation Will Off Set The Attachment By 1 Mm.
- Available In Imperial Specifications Also



### New Improved Taper Turning attachment with Dead Center for Lathe Machine

Item Code:ALNTT-DC

ASSORTS's  
New Development  
**EXCLUSIVE**



ASSORTS's  
**BEST SELLER**

- A New Much Improved And Precise Quality Of Taper Turning Attachment Than Our Previous Model.
- Gives You The Freedom From Old Traditional Method Of Off-setting The Tailstock Of Your Lathe , When You Wanted To Do The Metal Turning In A Taper Profile.
- It Has Hardened Dead Center-precisely Ground
- Unlike Our Old Previous Design, This Attachment Has A Much Better Control , Precision And Quality. Available In 2mt And 3mt Shanks
- Slide Can Be Shifted 25 Mm Left & Right .1 Handle Rotation Will Off Set The Attachment By 1 Mm.
- Also Available In Imperial Standards

### Morse Taper Shank Arbors with Small Chucks Mounting for Lathe's Tailstock

Item Code:ALMTA-CH

- Quality Arbors in various Morse Taper Shanks supplied with small Chucks for milling machine, lathe, drilling machine, wood working machine
- Arbors are made of quality tool steel & are hardened -ground.
- Small Chuck Body is of Cast Iron & Jaws are made of Tool Steel.
- Various morse tapers like MT1, 2 ,3 & 4 with mounting threads M12 x 1, M14 x 1 & self centering & Independent chucks options of 50 mm, 65 mm and 70 mm are being offered.



### Quality Revolving 2MT Live Center- JT2 Taper with Drill Chuck Capacity 1-10 mm

Item Code : AL2MRC-JT2



- An Ideal Quality Live Revolving Center Centre for Small Lathe Machines
- Small Body Diameter of 38 mm & Bearing Case Length of 24 mm.
- Body made of Quality Tool Steel. Double Bearing load.
- Supplied in 2MT Shank. Shank is Hard & precisely Ground.
- Supplied with a JT2 Taper Drill Chuck Capacity 1- 10 mm

### Precision Triple Bearings Live Revolving Center For Lathe Tailstock

Item Code:ALTRC-XX.XX

ASSORTS's  
BEST SELLER



- Precision quality hardened steel Triple Bearing Revolving Center, features 2 ball bearings & 1 Taper Bearing.
- Threaded Nozzle is made of EN31 Grade Tool Steel- Hardened 40 +1-2 HRC for long thread life.
- Body is Hardened Ground Steel Grade EN8D.
- Best for Metal Working & Wood Working Jobs-Guaranteed Run out within 0.01 mm

Item Code	Shank	Body Dia.	OAL	Mounting Thread
ALTRC-2M.12	2MT	2" / 50 mm	150 mm	M12 x 1
ALTRC-3M.12	3MT	2" / 50 mm	150 mm	M12 x 1
ALTRC-4M.12	4MT	2" / 50 mm	150 mm	M12 x 1
ALTRC-2M.14	2MT	2" / 50 mm	150 mm	M14 x 1
ALTRC-3M.14	3MT	2" / 50 mm	150 mm	M14 x 1
ALTRC-4M.14	4MT	2" / 50 mm	150 mm	M14 x 1

### Small Body 2MT Shank Revolving Live Centre Center-JT2 Taper Mounting

Item Code:ALSRC2M-JT2

- An Ideal Small Body Live Revolving Center Centre for Small Lathe Machines.
- Small Body Diameter of 38 mm & Bearing Case Length of 24 mm
- Double Bearing Assembly.
- Hardened & Precisely Ground.
- Comes in Morse Taper 2MT Shank





## High Precision Extended Point CNC Revolving Centers

Item Code : ALPEPRC-45



- Manufactured from highest grade of tested Magnaflux quality of Spring steel.
- The spindle shaft is manufactured from Bearing steel.
- High quality Branded Z type bearings are used in these revolving centers.
- The body ID(s) of the Revolving Centers are also grounded unlike other sellers who only provide machined ID(s).
- Body is oil quenched to meet a guaranteed hardness of 55- 58 HRC
- The Spindle shaft is oil quenched to meet a guaranteed hardness of 60- 62 HRC. Both Body and Shaft are also tempered apart oil hardening.
- Available in MT3, 4 & 5 from us,

## Caste Iron Back Plates for Lathe Machines

Item Code:ALCBP-CI

- We offer quality Caste Iron Back Plates in various size & thread options as per your lathe's nose mounting thread.
- Allows the mounting of Collet Chucks or any alternative lathe chuck.
- Either no recess Or rough recess as per customer's instruction are left on these plates so that the end user's can simply re-machine it as per their requirements.



## Steel Back Plates for Lathe Machines

Item Code:ALCBP-ST



- We offer quality Steel Back Plates in various size & thread options as per your lathe's nose mounting thread. Also we have Back Plates for Rotary Tables.
- Allows the mounting of Collet Chucks or any alternative lathe or Rotary chuck.
- Either no recess Or rough recess as per customer's instruction are left on these plates so that the end user's can simply re-machine it as per their requirements.
- The Rotary Table's Back Plates are supplied with Fixing Bolts to lock them with the T-slot of the table.

## LATHE MACHINE ACCESSORIES

### Wood Working Lathe's Spindle Adaptors For Chuck Mounting

Item Code: ALCAD-XX



- Wide Range of Lathe's Spindle Adapter for PSI & Similar wood working lathes to chucks or any lathe accessories.
- Made of Quality Tool Steel.
- This adaptor comes in various Bore Size & External Internal thread options
- Adapts to your lathe's Headstock or machine spindle to screw the small chucks

Code	Internal Bore /Thread	Male Thread	Remarks
ALCAD-01	5/8" Plain Bore	M12 X 1	Adapts to 5/8" Mark V PSI Woodworking lathe's Spindle to mount' Chucks having M12 x 1 mounting thread
ALCAD-02	5/8" Plain Bore	M14 X 1	Adapts to 5/8" Mark V PSI Woodworking lathe's Spindle to mount' Chucks having M14 x 1 mounting thread
ALCAD-03	3/4" X 16 TPI	M12 X 1	Adapts to Woodworking lathe of Spindle thread 3/4" x 16 TPI to mount Chucks having M14 x 1 mounting thread
ALCAD-04	3/4" X 16 TPI	M14 X 1	Adapts to 5/8" Mark V PSI Woodworking lathe's Spindle to mount Chucks having M14 x 1 mounting thread
ALCAD-05	1" X 8 TP	M12 X 1	Adapts to Woodworking lathe of Spindle thread 1" x 8 TPI to mount Chucks having M12 x 1 mounting thread
ALCAD-06	1" X 8 TPI	M14 X 1	Adapts to Woodworking lathe of Spindle thread 1" x 8 TPI to mount Chucks having M14 x 1 mounting thread
ALCAD-07	5/8" Plain Bore	1" X 8 TPI	Adapts to 5/8" Mark V PSI Woodworking lathe's Spindle to mount' Chucks having 1" x 8 TPI mounting thread

### Wood Working Lathe Spindle Adapter 5/8" Spindle Size for mounting Polishing Buffing Wheel

Item Code: ALWLA-MA

- Lathe Spindle Adapter to fit 5/8" plain Shopsmith spindle
- This spindle adapter is bored 5/8" for the plain Shopsmith spindle and has a locking set screw.
- The other end is threaded with a cap to tighten any buffing polishing wheel or any other similar accessory
- Drilling Buffing Polishing Shaping on a Shop-smith Wood working lathe
- Safety Note: It is very important that you securely fasten the spindle adapter to your lathe spindle. Failure to properly secure these components can result in injury.





### Woodworking Lathe's Spindle Adaptors For Mounting Polishing & Buffing Wheels

Item Code: ALWLA-B.X



- Lathe Spindle Adapter available to fit 5/8" plain spindle
- This spindle adapter is bored in 5/8" for the plain Shopsmith spindle and has a locking set screw.
- The other end is threaded with 2 washers and a nut to tighten any buffing polishing wheel or any other similar accessory
- Drilling Buffing Polishing Shaping on a Shop-smith Wood working lathe
- Safety Note: It is very important that you securely fasten the spindle adapter to your lathe spindle, and any of your 1-8 threaded accessories to the spindle adapter. Failure to properly secure these components can result in injury

Code	Internal	Bore Size
ALWLA-B.1	5/8" Plain	Bore Inside
ALWLA-B.2	1/2" Plain	Bore Inside

### 6" Inches Wood Lathe Chuck Threaded 3/4 \*16 with Independent & Reversible Jaws

Item Code: ALWC6-4.I



- 4-Jaws x 6"/ 150 mm Wood Lathe Chuck Threaded 3/4" x 16 with Independently Adjustable / Reversible Jaws
- Hold round stock securely with this 4-Jaw
- Jaws are independently adjustable, and they can be reversed. Includes chuck key.
- Graded Caste Iron body. Jaws are made of Alloy tool steel.

# MILLING MACHINE ACCESSORIES



## **This Section Includes:**

Boring Heads & Boring Cutting Tools  
Chucks with Back Plates for Rotary Tables  
Collet Adaptors  
Fly Cutters  
Rotary Tables & Accessories  
Sleeves & Arbors  
Slitting Saw Holders  
Tilting Milling Tables





## MILLING MACHINE ACCESSORIES

### Boring Heads & Brazed Tools

#### Boring Head- 2 Inches (50 mm)

Item Code: AMMBH-50



- Boring Head Set
- Accepts tooling of 1/2 " (12.7 mm) diameter  
1 Div = 0.001 mm
- Available in MT2/ MT3 / R8 shanks
- Option of Carbide Brazed And HSS Tooling Available

#### 30 mm Micro Boring Head

Item Code: AMMBH-30

- Head Diameter :30 mm
- 1 Division : 0.01 mm
- Has 2 bores to accept vertical tooling & 1 offset for reaching maximum bore diameter.
- Offset of the Boring head: 5 mm
- Shank thread 3/8" for drawbar.
- Supplied with staright shank, 2 MT & 3MT.
- Option of Carbide Brazed And HSS Tooling Available



#### Boring Head 1-1/2 Inches (38 mm)

Item Code: AMBH-38



- High precision boring head for milling machine of Head diameter 38 mm (1.5 Inches)
- Supplied with Straight, 2 MT & 3 MT shanks.
- 1 Division: 0.01 mm
- Option of Carbide Brazed And HSS Tooling Available

## MILLING MACHINE ACCESSORIES

### Carbide Brazed Boring Bars

Item Code: AMCBT-XXX



- A complete 9 PC. set of carbide tipped boring tools.
- Rigid design providing heavy steel body behind the cutting edge for chatter free boring.
- The heavier head size behind the cutting edge provides rigidity & longer life since the vibration is reduced.
- Shanks are precisely grounded.

Prod. Code	Shank Dia (Inches)	Min. Bore Dia (Inches)	Max. Bore Dept (Inches)	OAL (Inches)
AMCBT-101A	3/8	5/16	3/4	2
AMCBT-101B	3/8	5/16	1-1/8	2-3/8
AMCBT-101C	3/8	5/16	1-1/2	2-3/4
AMCBT-101D	3/8	3/8	15/16	2-3/16
AMCBT-101E	3/8	3/8	1-13/32	2-21/32
AMCBT-101F	3/8	3/8	1-7/8	3-1/8
AMCBT-101G	3/8	7/16	1-1/8	2-3/8
AMCBT-101H	3/8	7/16	1-11/16	2-15/16
AMCBT-101I		7/16	2-1/4	3-1/2
AMCBT-101S	A set of above 9 Boring Bars of 3/8" Diameter			
AMCBT-102A	1/2	5/16	3/4	2-1/4
AMCBT-102B	1/2	5/16	1-1/8	2-5/8
AMCBT-102C	1/2	5/16	1-1/2	3
AMCBT-102D	1/2	7/16	1-1/8	2-5/8
AMCBT-102E	1/2	7/16	1-11/16	3-3/16
AMCBT-102F	1/2	7/16	2-1/4	3-3/4
AMCBT-102G	1/2	9/16	1-1/2	3
AMCBT-102H	1/2	9/16	2-1/4	3-3/4
AMCBT-102I	1/2	9/16	3	4-1/2
AMCBT-102S	A set of above 9 Boring Bars of 1/2" Diameter			
AMCBT-102A	1/2	5/16	3/4	2-1/4
AMCBT-102B	1/2	5/16	1-1/8	2-5/8
AMCBT-102C	1/2	5/16	1-1/2	3
AMCBT-102D	1/2	7/16	1-1/8	2-5/8
AMCBT-102E	1/2	7/16	1-11/16	3-3/16
AMCBT-102F	1/2	7/16	2-1/4	3-3/4
AMCBT-102G	1/2	9/16	1-1/2	3
AMCBT-102H	1/2	9/16	2-1/4	3-3/4
AMCBT-102I	1/2	9/16	3	4-1/2
AMCBT-102S	A set of above 9 Boring Bars of 1/2" Diameter			
AMCBT-103A	5/8	5/16	3/4	2-1/4
AMCBT-103B	5/8	5/16	1-1/8	2-5/8
AMCBT-103C	5/8	5/16	1-1/2	3
AMCBT-103D	5/8	7/16	1-1/8	2-5/8
AMCBT-103E	5/8	7/16	1-11/16	3-3/16
AMCBT-103F	5/8	7/16	2-1/4	3-3/4

### 62 mm Boring Head with Tools

Item Code: AMBH-62



- High Precision Micro Boring Head Diameter 62 mm set.
- Boring Capacity: 12 mm to 125 mm
- Back thread M16x 1.5
- 1 Division = 0.02 mm OR 1 Division = 0.01 mm as per customer needs.
- Supplied with 1 Carbide Brazed Tool 12 mm, 1 High Speed Cutter & 2 Fly cutter
- tools-12mm
- Comes with 2 MT, 3 MT, R8, ISO-30/ 40 & BT-40 Shanks.
- Supplied with 2 Alien keys of size 2.5 mm & 6 mm
- Supplied in a beautiful finished strong Wooden Box.



## Pivot Head Boring Head

Item Code: AMPBH-45



- A very quality & precise boring tools of head diameter : 45 mm
- 1 Div = 0.02 mm
- Accepts boring tool of 3/8" diameter.
- Tapped 3/8" for holding drawbar.
- Boring Capacity: 4-1/2" (114 mm)
- Set Includes 1 HSS Boring Bar, 1 Fly Cutter & 3 Allen keys.
- Comes with a 2MT or 3 MT shanks

Boring Head 1.5 Inches in 2MT & 3MT Shanks

Item Code:AMMBH-1.5

- Fine adjustment micro Boring Head of size 1.5" (Inches)
- 1 Division = 0.001 thou
- Has 2 bores to accept vertical tooling & 1 offset for reaching maximum bore diameter.
- Supplied in 2MT & 3MT shanks available with Metric (M10 in 2MT & M12 in 3MT) & Imperial (3/8" x 16 TPI whitworth) threads for Drawbar.
- Accepts tooling of diameter 5/16" Inches (8 mm)
- Supplied along with 3 carbide brazed boring bars.



## Boring Head 1.5 Inches in R8 Shanks

Item Code:AMBH-1.5R8



- Fine adjustment micro boring head of size 1.5" (Inches)
- 1 Division = 0.001 thou
- Has 2 bores to accept vertical tooling & 1 offset for reaching maximum bore diameter.
- Supplied in R8 shank 7/16" UNF
- Accepts tooling of diameter 5/16" Inches (8 mm)
- Supplied along with 3 carbide brazed boring bars.

## MILLING MACHINE ACCESSORIES

### Chucks with Back Plates for Rotary Tables

#### 50 mm Small Independent Chuck-4 Jaw

Item Code: AMRTC-50.4



- A very Small but high Quality 4 Jaw Independent steel chuck, where Jaws are hardened & ground.
- Same Jaws are reversible as well
- Supplied with a mounting back plate & fixing tee nuts with screws. (though the picture is not showing the same)
- The Back plate has been drilled in a manner that it will fit to a 3 slot or a 4 slot rotary table.
- The chuck mounting is standard Unimat Thread M14 x 1

#### Small Independent Chuck-4 Jaw with Back Plates

Item Code: AMRTC-XX.4

- A high Quality 4 Jaw Independent chuck, the body of which is made from SG Iron & Jaws are of Tool steel hardened & ground.
- Same Jaws are reversible as well.
- Supplied with a mounting back plate & fixing tee nuts with screws.
- The Back plate has been drilled in a manner that it will fit to a 3 slot or a 4 slot rotary table.
- The chuck mounting is standard Unimat Thread M14 x 1



Prod. Code	Chuck Diameter	Designed For
AMRTC-70.4	70 mm	3" & 4" Rotary Table
AMRTC-80.4	80 mm	4" & HV4 Rotary Table

### Lathe Chuck Key

Item Code: AMLCK-105.X



- Hardened & Tempered for a long life.
- Available in Precisely ground finish.

Prod. Code	Size	
	(in Inches)	(in mm)
AMLCK-105.A	15/64	6.00
AMLCK-105.B	9/32	7.00
AMLCK-105.C	15/32	12.00
AMLCK-105.D	1/4	6.35
AMLCK-105.E	5/16	8.00
AMLCK-105.F	3/8	9.50
AMLCK-105.G	7/16	11.20
AMLCK-105.H	1/2	12.70
AMLCK-105.I	9/16	14.30
AMLCK-105.J	5/8	16.00
AMLCK-105.K	11/16	17.50
AMLCK-105.L	3/4	19.00
AMLCK-105.M	1	25.40



## 65 mm 3 Jaw Self Centering Chuck

Item Code: AMRTC-65.3



- A high Quality 65mm 3 Jaw Self centering chuck with a mounting back plate & fixing tee nuts with screws.
- Designed to fit our 3 or 4" Rotary table with either 3 or 4 slots.
- The chuck mounting is standard Unimat Thread M14 x 1
- The Back plate has been drilled in a manner that it will fit to a 3 slot or a 4 slot rotary table.

## 80 mm 3 Jaw Self Centering Chuck

Item Code: AMRTC-80.3

- A high Quality 80 mm 3 Jaw Self centering chuck body made from SG Iron & Jaws are of Tool steel hardened & ground.
- A set of reversible jaws is supplied extra.
- Supplied with a mounting back plate & fixing tee nuts with screws.
- Designed to fit our 3 or 4" Rotary table with either 3 or 4 slots & HV4/5/6 Rotary Tables.
- For HV4/ 5/ 6 Rotary Tables, our back plate's spigot extension is machined to MT2 shank that fits to the centre hole of the Table for a perfect centre match & hence no error in its working.
- The Back plate has been drilled in a manner that it will fit to a 3 slot or a 4 slot rotary table.
- The recess of the back plate is machined perfectly to fit the recess of the chuck to avoid any play.
- The recess of the back plate is machined to exactly fit the recess of the Chuck.



## 100 mm 3 Jaw Self Centering Chuck

Item Code: AMRTC-100.3



- A high Quality 100 mm 3 Jaw Self centering chuck body made from SG Iron & Jaws are of Tool steel hardened & ground.
- A set of reversible jaws is supplied extra.
- Supplied with a mounting back plate & fixing tee nuts with screws. (though the picture is not showing the same)
- Designed to fit our 3 or 4" Rotary table with either 3 or 4 slots.
- The Back plate has been drilled in a manner that it will fit to a 3 slot or a 4 slot rotary table.
- The recess of the back plate is machined perfectly to fit the recess of the chuck to avoid any play.

## MILLING MACHINE ACCESSORIES

### 65 mm 3 Jaw Spiral Self Centering Chuck with Back Plate & Tee nuts

Item Code: AMSRC-65.3



- A high Quality 65mm 3 Jaw Self centering chuck with a mounting back plate & fixing tee nuts with screws.
- Designed to fit our 3 or 4" Rotary table with either 3 or 4 slots.
- The chuck mounting is standard Unimat Thread M14 x 1.
- The Back plate has been drilled in a manner that it will fit to a 3 slot or a 4 slot rotary table.
- Supplied with a separate set of 3 reversible jaws.

### 65 mm 4 Jaws Chuck for Rotary Tables

Item Code:AMRTC-65.4X

- A high Quality 65mm 4 Jaws Self centering & Independent chucks with a mounting back plate & fixing tee nuts with screws.
- Overall Height: 53 mm (with Back Plate) & 40 mm (without Back Plate)
- Designed to fit our 3 or 4" Rotary table with either 3 or 4 slots.
- The chuck mounting is standard Unimat Thread M14x 1
- The Back plate has been drilled in a manner that it will fit to a 3 slot or a 4 slot rotary table



Prod. Code	Description of Products	Mounting Thread
AMRTC-65.4I	65 mm 4 Jaws Independent Chuck with Back Plates + T-nuts	M14 x 1
AMRTC-65.4S	65 mm 4 Jaws Self Centering Chuck with Back Plates + T-nuts	M14 x 1

## Fly Cutters

### Fly Cutter Holder with HSS Bit

Item Code: AMFC1- XX



**ASSORTS's  
BEST SELLER**

- An excellent quality product for boring through the holes & is manufactured from Fine quality tool steel.
- Supplied in ground finish & with HSS tool bit

Prod. Code	Head Dia.	Tool Bit	Possible Shank's Thread
AMFC1-2MT	1-1/2"	1/4" Sq	Tapped 3/8" & M10
AMFC1-3MT	2"	3/8" Sq	Tapped 3/8" , 1/2" & M12
AMFC1-R8	2.5"	5/16" Sq	Tapped 7/16" UNF



## MILLING MACHINE ACCESSORIES

### Fly Cutter Tool Holders Set (Wooden Base)

Item Code: AMFC3X-XX

**ASSORTS'S  
BEST SELLER**



- An excellent quality product for boring through the holes & is manufactured from Fine quality tool steel.
- Supplied in Epoxy black finish on a wooden stand.
- HSS tool bits are also supplied if requested by customer.

Prod. Code	Head Dia	Head Dia	Shank Size	Shank Size	Tool Bit	Tool Bit
AMFC3S-19	3/4"	19.0 mm	1/2"	12.7 mm	3/16"	4.5 mm
AMFC3M-28	1-1/8"	28.0 mm	1/2"	12.7 mm	1/4"	6.0 mm
AMFC3B-38	1-1/2"	38.0 mm	1/2"	12.7 mm	5/16"	8.0 mm
AMFC3SMB	A Set of Above 3 Fly Cutter Tool Holders					
AMFC3S-38	1-1/2"	38.0 mm	3/4"	19.0 mm	5/16"	8.0 mm
AMFC3M-51	2"	50.8 mm	3/4"	19.0 mm	5/16"	8.0 mm
AMFC3B-64	2-1/2"	63.5 mm	3/4"	19.0 mm	5/16"	8.0 mm
AMFC3SMB-II	A Set of Above 3 Fly Cutter Tool Holders					

### Round Head Fly Cutter Set with HSS Bit

Item Code: AMRFC-10.3

- Shank size -3/8" (9.5 mm)
- Body Dia- 9/16", 3/4" & 7/8"
- Comes in a black epoxy finish for a lasting protection.
- Set includes HSS Bits as well



### Rotary Table & Accessories

#### 2.75 Inches Mini Rotary Table

Item Code: AMRT-2.75



- Our smallest mini Rotary Table for Milling operation with Table Diameter - 2.75 Inches (72 mm)
- Height :1.5 Inches (39 mm )
- Tee Slot width : 6.5 mm
- Worm- Gear Ratio is 1: 48, which means that 1 handle rotation shall turn the table 7.5 degrees.
- Dimensions of the Base : 4-1/8" x 3" (105 mm x 75 mm)
- Clamping slot centre distance is 92 mm
- Designed specially for smaller operations like watch making or jewellery makers.

# MILLING MACHINE ACCESSORIES

## Rotary Table & Accessories

### 3 Inches (75 mm) Rotary Table -3 Slots

Item Code: AMRT-75.3



- A Precision Small Rotary Table for Milling operation with Table Diameter - 3
- Inches (75 mm) with 3 slots.
- Height - 47 mm
- Worm- Gear Ratio - 36:1, which basically means that 1 handle rotation shall turn the table by 10 Degrees.
- Table graduated in 360 Degrees & the scale calibrated in 5 degree increment.
- Centre Height in Vertical position is 52 mm.
- Can be used in both horizontal & vertical position.

### 3 Inches (75 mm) Rotary Table -4 Slots

Item Code: AMRT-75.4



- A Precision Small low profile Rotary Table for Milling operation with Table Diameter - 3 Inches (75 mm)
- Height - 38mm
- Worm- Gear Ratio - 36:1, which basically means that the 1 rotation of the handle shall rotate the table by 10 degrees.
- Table scale is calibrated in 5 degree increment.
- Can be used both in horizontal & vertical position.

### 3 Inches (75 mm) Tilting Rotary Table

Item Code: AMTRT-75.4



- Designed to tilt between 0- 90 Degrees & can be locked at any position.
- Table Diameter - 3 Inches (75 mm)
- Height - 47 mm
- Worm- Gear Ratio - 36:1, which basically means that the 1 rotation of the handle shall rotate the table by 10 degrees.
- Can be used both in horizontal & vertical position.



## Rotary Table & Accessories

### 4 Inches (100 mm) Rotary Table

Item Code: AMRT-100.4

**ASSORTS'S  
BEST SELLER**



- Designed for smaller milling machines.
- Table diameter 100 mm
- Table is graduated 360 Degrees.
- Worm Gear Ratio -1:36, which means that the 1 handle rotation shall turn the table by 10 Degrees.
- Center Height in vertical position: 2-1/16" (50 mm approx)
- Hand wheel is graduated in divisions of 10 min & can be set to zero.
- Can be mounted both in Horizontal & vertical position.

### 4 inches (100 mm) Tilting Rotary Table

Item Code: AMTRT-100.4

- Features to tilts between 0- 90 Degrees & can be locked at any position.
- Table diameter 100 mm
- Table is graduated 360 Degrees.
- Worm Gear Ratio -1:36, which means that the 1 handle rotation shall turn the table by 10 Degrees.
- Center Height in vertical position: 2-5/8" (66 mm approx)
- Hand wheel is graduated in divisions of 10 min & can be set to zero.
- Can be mounted both in Horizontal & vertical position



### HV4 Rotary Table ( Table Diameter -110 mm)

Item Code: AMRT- HV4.3



- Table Diameter : 110 mm (4-3/8")
- Table Height: 80 mm (3 -1/8")
- Worm Gear Ratio - 1:90, which means that 1 handle rotation shall turn the table by 4 Degrees.
- Centre Bore of the Table MT2
- Table Graduated 360 Degrees. Handwheel graduated in seconds.
- Vernier scale is calibrated to 10 seconds.
- 2 Oiling Points for a direct lubrication of the Table for longer life & better performance.
- Can be clamped in Horizontal as well Vertical Position.

# MILLING MACHINE ACCESSORIES

## Rotary Table & Accessories

### HV4 Rotary Table ( Table Diameter -110 mm)- 4 Slots

Item Code:AMRT- HV4.4



- Table Diameter : 110 mm (4-3/8")
- Table Height : 80 mm (3-1/8")
- Worm Gear Ratio -1:90, which means that 1 handle rotation shall turn the table by 4 Degrees.
- Centre Bore of the Table Mt2
- Table Graduated 360 Degrees. Handwheel graduated in seconds.
- Vernier scale is calibrated to 10 seconds.
- 2 Oiling Points for a direct lubrication of the Table for longer life & better performance.
- Can be clamped in Horizontal as well Vertical Position.

## Rotary Table & Accessories

### Tailstock for HV4/5/6 Rotary Table

Item Code: AMTS-456



- Very Robust Quality Item in Cast Iron
- Quality Tailstock suitable for HV4, HV5 and HV6 Rotary Tables.
- Maximum Centre Height: 105mm
- Minimum Centre Height: 80mm
- Base dimension 135mm x 90mm

### Adjustable Tailstock for HV8 Rotary Table- Hardened & Ground Point

Item Code: AMTS-HV8

- Quality Adjustable Tailstock For Hv8 /8" Inches Rotary Table
- With Ground Finish To Centre Holder And Slideways.
- Very Robust Design In Cast Iron.
- Alloy Steel Hardened & Ground Point Center
- Centre Height Maximum - 215mm
- Centre Height Minimum - 130mm
- Centre Travel - 30mm
- Base Dimension - 190 X 150mm
- Overall Casting Height - 205mm
- Weight - 10kg





### Dividing Plates Set for HV4 & HV6 Rotary Table

Item Code: AMDP-4.6



- Set of 3 dividing plates designed to fit our HV4 & HV6 Rotary Tables.
- Centre Hole of the Plate is 21 mm
- No. of Holes in each Plate
  - Plate A- 15, 16, 17, 18, 19, 20,
  - Plate B- 21, 23, 27, 29, 31, 33
  - Plate C- 37, 39, 41, 47, 49
- It is supplied with a brass stopper key, Bracket, Crank Handle & fixing screws.

### Back Plates with T-nuts & fixing Screws for Rotary Tables

Item Code: AMRBP-XXX



- Excellent quality back plates to mount chucks on the Rotary tables.
- Manufactured from tool Steel & ground finished.
- Drilled in a manner that they fit both a 3 as well as 4 slot tables.
- In case of MT taper bore Rotary tables, the back plates are provided with an extension to fit to the centre bore so that the centre of the Table and back plate remains absolute co-centric.

Prod. Code	Plate Size	Suitable Rotary Size	Ext. Taper	Thread/ Recess for Chuck Mounting
AMRBP-065	65 mm	75 & 100 mm	—	Unimat Thread- 14 x 1
AMRBP-080	80 mm	100 & 125 mm	—	No Thread. Recess to Fit Chuck's recess
AMRBP-100	100 mm	HV4	MT2	No Thread. Recess to Fit Chuck's recess
AMRBP-125	125 mm	HV4/HV5	MT2	No Thread. Recess to Fit Chuck's recess
AMRBP-150	150 mm	HV6	MT2	No Thread. Recess to Fit Chuck's recess

### 4 Inches (100 mm) Tilting Rotary Table-3 Slots with Dividing Plates Set

Item Code: AMTRT-100.3N



- Table Diameters: 100 mm
- Features to Tilts between 0-90 Degrees & can be locked at any position.
- Overall Height: 2-5/8" (66 mm Approx)
- Centre Height in Vertical position (@ 90 Degree Tilt) is 3-3/8" (86 mm approx).
- Centre Bore is MT2
- Table Graduated 360 Degrees, Resettable Dial & Handwheel is graduated in seconds. Vernier scale is calibrated to 10 seconds.
- Worm gear ratio is 1: 72, which means that the table will turn 5 Degrees on one handle rotation.
- Centre Bore of the Table: 2 MT
- Can be clamped in Horizontal as well Vertical Position.
- Supplied with a set of Dividing Plates along for Indexing. Its ASSORTS Exclusive !!

## MILLING MACHINE ACCESSORIES

### Rotary Table & Accessories

#### 4 Inches (100 mm) Tilting Rotary Table-3 Slots

Item Code:AMTRT-100.3



- Features to tilts between 0- 90 Degrees & can be locked at any position.
- Table diameter 100 mm
- Table is graduated 360 Degrees.
- Worm Gear Ratio -1:36, which means that the 1 handle rotation shall turn the table by 10 Degrees.
- Center Height in vertical position: 2-5/8" (66 mm approx)
- Hand wheel is graduated in divisions of 10 min & can be set to zero.
- Can be mounted both in Horizontal & vertical position

#### HV4 Tilting Rotary Table (Table Diameter-110 mm)

Item Code: AMTVRT-110

- Table Diameter 110 mm
- Base Dimension - 175 mm x 145 mm
- Horizontal Height- 125 mm
- Centre Height in Vertical Position- 80 mm
- Tilting calibration from 0 - 90°
- 2 fixed stoppers which stops the table in horizontal & vertical (90 Degrees) positions.
- Handwheel has disengagement feature for free table rotation
- Lubrication pins for worm and table oiling.
- Worm Gear Ratio 1:90, which means that the table will rotate 4 degree with 1 handle rotation.



#### 5 Inch (125 mm) Rotary Table

Item Code: AMORT-125



- Table Diameter of Rotary Table : 125mm / 5" with 4 slots.
- Rotary Table T-Slot Size : 20mm.
- The Hand Wheel of can Be Set to 0.
- Centre Height is 85mm.
- Can Be Used Both Horizontally & Vertically.
- This milling table has a Centre Bore of 14mm.



# MILLING MACHINE ACCESSORIES

## Rotary Table & Accessories

### HV6 Rotary Table (Table Diameter-150 mm)

Item Code: AMRT-150.4

- Rotary Table Diameter : 150 mm (6")
- Overall Height: 80 mm (3-1/4")
- Centre Height in Vertical Position: 105 mm
- Worm- Gear Ratio-1:90, which means that the 1 handle rotation shall turn the table by 4 Degrees.
- Table Graduated 360 Degrees, Resettable Dial & Handwheel graduated in seconds. Vernier scale is calibrated to 10 seconds.
- Centre Bore of the Table: 2 MT
- 2 Oiling Points for a direct lubrication of the Table for longer life & better performance.
- Can be clamped in Horizontal as well Vertical Position.



### HV6 Rotary Table (Table Diameter-150 mm)

Item Code:AMRT-150.3

- Rotary Table Diameter: 150 mm (6")- 3 Slots
- Overall Height:80mm(3-1/4")
- Centre Height in Vertical Position: 105mm
- Worm- Gear Ratio- 1:90, which means that the 1 handle rotation shall turn the table by 4 Degrees.
- Table Graduated 360 Degrees, Resettable Dial & Handwheel graduated in seconds. Vernier scale is calibrated to 10 seconds.
- Centre Bore of the Table: 2 MT
- 2 Oiling Points for a direct lubrication of the Table for longer life & better performance.
- Can be clamped in Horizontal as well Vertical Position.



### HV8 / 8" Rotary Table

Item Code: AMRT-200.3



- Rotary Table Diameter: 200 mm (8")
- Overall Height: 105 mm (4-1/8")
- Worm- Gear Ratio is 1:90, which means that the 1 handle rotation shall turn the table by 4 Degrees.
- Table Graduated 360 Degrees, Resettable Dial & Handwheel graduated in seconds. Vernier scale is calibrated to 10 seconds.
- Centre Bore of the Table: 3 MT
- Can be clamped in Horizontal as well Vertical Position.

# MILLING MACHINE ACCESSORIES

## Rotary Table & Accessories

### 5 Inches (127 mm) Rotary Table

Item Code: AMRT-125.3



- Rotary Table Diameter :127 mm (5")
- Overall Height: 87 mm ( 3-7/16")
- Centre Height in Vertical Position: 90 mm
- Worm- Gear Ratio-1:72, which means that the 1 handle rotation shall
- turn the table by 5 Degrees.
- Tee -Slot width (Top of the Table): 12 mm
- Table Graduated 360 Degrees, Resettable Dial & Handwheel
- graduated in seconds. Vernier scale is calibrated to 10 seconds.
- Centre Bore of the Table: 2 MT
- Can be clamped in Horizontal as well Vertical Position.

### Square Base 2 Slot Rotary Table-98 mm

Item Code: AMERT-98

- This Rotary Table has a Table diameter of 98 mm and fits into the myford vertical slide directly.
- Base dimension of the table is 100 mm x 100mm x 55 mm . Table is graduated 0- 360 degrees and works on a ratio of 60: 1, which basically means that 1 handle rotation would turn the table by 6 degrees.
- Note: We also manufacture the fixed base as well as Swivel Type Vertical Slide to which this Rotary Fits quickly.



### Round Vices for Rotary Tables

Item Code : AMRRV-XXX

**ASSORTS's  
BEST SELLER**

- Made of high grade close grain caste Iron.
- Designed to fit our 3" (75 mm) & 4" (100 mm) Rotary Tables.
- The moving jaw has V-grooves to hold Round objects.
- Again these vices are drilled in a manner that these can fit to a 3 as well 4 slot table.
- The Drills are counter bored to ensure that the fixing screws sets perfectly ensure perfect movement.



Prod. Code	Dia of Base	Jaw Width	Jaw Depth	Jaw Opening	Height
AMRRV-080	80 mm	54 mm	20 mm	32 mm	29 mm
AMRRV-105	105 mm	77 mm	21 mm	40 mm	32 mm



## Rotary Table & Accessories

### Rotary Table 4 Inches (100 mm)- 3 Slots

Item Code: AMRT-100.3



- Designed for smaller milling machines.
- Table diameter 100 mm
- Table is graduated 360 Degrees.
- Worm Gear Ratio -1:36, which means that the 1 handle rotation shall turn the table by 10 Degrees.
- Center Height in vertical position: 2-1/16" (50 mm approx)
- Hand wheel is graduated in divisions of 10 min & can be set to zero.
- Can be mounted both in Horizontal & vertical position

### Tilting Universal Tailstock

Item Code:



- This high quality universal tailstock with variable centre Height is designed to suit our HV4/ HV5/ HV6 Rotary Tables.
- The centre height is adjustable by lead screw & can be adjusted from minimum 40 mm to 95 mm maximum.
- Featuring a pivoting centre.
- The dead centre is induction hardened & precisely ground.

### Tailstock for 4 Inch (100 mm) Rotary Table

Item Code: AMMTS-100



- Manufactured from high quality close grain seasoned casting.
- Minimum Centre Height: 75 mm.
- Maximum Centre Height: 95 mm
- Base Dimensions: 50 mm x 120 mm
- Designed to suit 4" (100 mm) Regular & Tilting Rotary Table.
- The dead centre is hardened & precision ground.

### Small Lathe Tailstock for 3 Inches (75 mm) & 4 Inches (100 mm) Rotary Tables

Item Code:AMTS-34

- Small Lathe Tailstock Suitable For 3" (75 Mm) & 4" (100 Mm) Rotary Tables.
- Very Robust Quality Tailstock In Cast Iron, The Moving Dead Centre In En31- Hardened & Ground
- Elegantly Designed In A Way That Same Tailstock Suits To 3" & 4" Regular And Tilting Models Of Our Rotary Tables.
- Pis See All The 4 Pictures To Understand The Different Positioning Of This Tailstock For Different Rotary Tables,





## Sleeves & Arbors

### Drill Sleeves

Item Code: AMDS-XX



- Manufactured from Carbon Steel & available in both soft as well as hardened type.
- Available in workshop grade ( Unhardened ground externally & reamer internally) & A grade ( Hardened ground internally and externally).
- To be used to adapt smaller MT shank tools to larger machine spindles.
- The concentricity & taper angles are precisely controlled to allow perfect locking & concentric movement of the tool held.

Prod. Code (Workshop)	Prod. Code (A-Grade)	Morse Taper -Outside	Morse Taper- Inside	Overall Length (mm)
AMDS-W12	AMDS-A12	1	2	92
AMDS-W13	AMDS-A13	1	3	99
AMDS-W14	AMDS-A14	1	4	124
AMDS-W15	AMDS-A15	1	5	171
AMDS-W23	AMDS-A23	2	3	121
AMDS-W24	AMDS-A24	2	4	124
AMDS-W25	AMDS-A25	2	5	156
AMDS-W34	AMDS-A34	3	4	140
AMDS-W35	AMDS-A35	3	5	156
AMDS-W45	AMDS-A45	4	5	171
AMDS-W46	AMDS-A46	4	6	218
AMDS-W56	AMDS-A56	5	6	218
AMDS-W62	AMDS-A62	6	2	218

### Extension Sleeves

Item Code: AMES-XX



- As per DIN 2187 Standards.
- Manufactured from case hardened steel.
- Used for extending the taper shanks tools.
- Precision ground from both inside and outside in A grade goods.

Prod. Code	Prod. Code IN	Morse Taper OUT
AMES-11	1	1
AMES-12	1	2
AMES-13	1	3
AMES-14	1	4
AMES-15	1	5
AMES-21	2	1
AMES-22	2	2
AMES-23	2	3
AMES-24	2	4
AMES-25	2	5
AMES-32	3	2
AMES-33	3	3
AMES-34	3	4
AMES-35	3	5
AMES-42	4	2
AMES-43	4	3
AMES-44	4	4
AMES-45	4	5
AMES-46	4	6
AMES-53	5	3
AMES-54	5	4
AMES-55	5	5
AMES-56	5	6
AMES-66	6	6

## MILLING MACHINE ACCESSORIES

### Drill Chuck Arbor JT Taper

Item Code: AMDCA-JTW-XX &



Prod. Code (Unhardened & Ground)	Prod. Code (Unhardened & Ground)	Jacob Taper Shank	Morse Taper Shank
AMDCA-JTW-11	AMDCA-JTA-11	1	1
AMDCA-JTW-21	AMDCA-JTA-21	2	1
AMDCA-JTW-31	AMDCA-JTA-31	3	1
AMDCA-JTW-41	AMDCA-JTA-41	4	1
AMDCA-JTW-51	AMDCA-JTA-51	5	1
AMDCA-JTW-61	AMDCA-JTA-61	6	1
AMDCA-JTW-331	AMDCA-JTA-331	33	1
AMDCA-JTW-02	AMDCA-JTA-02	0	2
AMDCA-JTW-12	AMDCA-JTA-12	1	2
AMDCA-JTW-22	AMDCA-JTA-22	2	2
AMDCA-JTW-32	AMDCA-JTA-32	3	2
AMDCA-JTW-42	AMDCA-JTA-42	4	2
AMDCA-JTW-52	AMDCA-JTA-52	5	2
AMDCA-JTW-62	AMDCA-JTA-62	6	2
AMDCA-JTW-332	AMDCA-JTA-332	33	2
AMDCA-JTW-13	AMDCA-JTA-13	1	3
AMDCA-JTW-23	AMDCA-JTA-23	2	3
AMDCA-JTW-33	AMDCA-JTA-33	3	3
AMDCA-JTW-43	AMDCA-JTA-43	4	3
AMDCA-JTW-53	AMDCA-JTA-53	5	3
AMDCA-JTW-63	AMDCA-JTA-63	6	3
AMDCA-JTW-333	AMDCA-JTA-333	33	3
AMDCA-JTW-24	AMDCA-JTA-24	2	4
AMDCA-JTW-34	AMDCA-JTA-34	3	4
AMDCA-JTW-44	AMDCA-JTA-44	4	4
AMDCA-JTW-54	AMDCA-JTA-54	5	4
AMDCA-JTW-64	AMDCA-JTA-64	6	4
AMDCA-JTW-334	AMDCA-JTA-334	33	4
AMDCA-JTW-25	AMDCA-JTA-25	2	5
AMDCA-JTW-35	AMDCA-JTA-35	3	5
AMDCA-JTW-45	AMDCA-JTA-45	4	5
AMDCA-JTW-55	AMDCA-JTA-55	5	5
AMDCA-JTW-65	AMDCA-JTA-65	6	5
AMDCA-JTW-335	AMDCA-JTA-335	33	5

### Drill Chuck Arbor R8 Shank

Item Code: AMDCA-R8XX



Product Code	JT Taper to Fit Drill Chuck
AMDCA-R801	1
AMDCA-R802	2
AMDCA-R803	3
AMDCA-R804	4
AMDCA-R806	5
AMDCA-R833	6



## Straight Shank Arbors

Item Code: AMSSA-JTX-XX



Prod. Code	Shank Dia.	Shank Length	Jacob Taper
AMSSA-JT0-01	3/8"	2-1/2"	0
AMSSA-JT1-02	3/8"	2-1/2"	1
AMSSA-JT2-03	3/8"	2-1/2"	2
AMSSA-JT0-04	1/2"	2-1/2"	0
AMSSA-JT1-05	1/2"	2-1/2"	1
AMSSA-JT2-06	1/2"	2-1/2"	2
AMSSA-JT3-07	1/2"	2-1/2"	3
AMSSA-JT4-08	1/2"	2-1/2"	4
AMSSA-JT6-09	1/2"	2-1/2"	6
AMSSA-JT33-10	1/2"	2-1/2"	33
AMSSA-JT0-11	5/8"	2-1/2"	0
AMSSA-JT1-12	5/8"	2-1/2"	1
AMSSA-JT2-13	5/8"	2-1/2"	2
AMSSA-JT3-14	5/8"	2-1/2"	3
AMSSA-JT4-15	5/8"	2-1/2"	4
AMSSA-JT6-16	5/8"	2-1/2"	6
AMSSA-JT33-17	5/8"	2-1/2"	33
AMSSA-JT0-18	3/4"	3"	0
AMSSA-JT1-19	3/4"	3"	1
AMSSA-JT2-20	3/4"	3"	2
AMSSA-JT3-21	3/4"	3"	3
AMSSA-JT4-22	3/4"	3"	4
AMSSA-JT6-23	3/4"	3"	6
AMSSA-JT33-24	3/4"	3"	33
AMSSA-JT0-25	1"	3"	0
AMSSA-JT1-26	1"	3"	1
AMSSA-JT2-27	1"	3"	2
AMSSA-JT3-28	1"	3"	3
AMSSA-JT4-29	1"	3"	4
AMSSA-JT6-30	1"	3"	6
AMSSA-JT33-31	1"	3"	33
AMSSA-JT3-32	1-1/2"	4"	3
AMSSA-JT4-33	1-1/2"	4"	4
AMSSA-JT3-34	1-3/4"	4"	3
AMSSA-JT4-35	1-3/4"	4"	4

## 8 Pc. Expandable Arbor Set

Item Code: AMDSA-BXX



- Expanding Lathe Arbor Set of 8 Arbors of variable Face diameters used in lathes, Milling machines, chucks, collets, fixtures.
- Minimum Face Diameter : 1/4". Maximum Face Diameter : 1-1/4". or large or small
- Size Increments of 1/8" between these arbors, i.e 1/4", 3/8", 1/2", 5/8", 3/4", 7/8", 1", 1-1/4" Arbors. Overall Length: 3" & 4".
- With Allen Wrenches on a handy wooden stand

## MILLING MACHINE ACCESSORIES

### Blank Arbors

Item Code: AMBA-XXX.X



- Manufactured from Tool Steel.
- These can be machined as per individual requirements for mounting chucks etc.
- Precision Ground.

Prod. Code	Shank's Taper	Diameter	Thread for Drawbar
AMBA-126.T AMBA-126.D	MT1	1 Inch	1/4 BSW
AMBA-127.TAMBA-127.D	MT2	1 Inch	3/8 x 16
AMBA-128.TAMBA-128.D	MT3	1 Inch	3/8 x 16
AMBA-129.TAMBA-129.D	MT1	25 mm	M6
AMBA-130.TAMBA-130.D	MT2	25 mm	M10
AMBA-131.TAMBA-131.D	MT3	25 mm	M10
AMBA-132.TAMBA-132.D	R8	1-1/4 Inch	7/16 UNF

### Slitting Saw Holders

#### Slitting Saw Holder-R8

Item Code: AMSSH-R8

- The spring loaded head readily accepts saw blades from 1/2" till 1".
- The blades are firmly secured in position with Hex head screw.
- Rust resistant black oxidised finish in R8 Shank.



#### Slitting Saw Holder-Straight Shank 1/2 Inch

Item Code: AMSSH-ST



- Mounted easily on a collet chuck or any other similar method of holding parallel shank.
- Spring loaded Mechanism
- Straight Shank 1/2" (12.7 mm), Overall Length 2 -5/8" ( 66.7 mm).
- Holds saw blade of bore sizes 1/2", 5/8", 3/4", 7/8" & 1" of maximum thickness 3/16 Inches.



## Slitting Saw Holders- Morse Taper Shanks

Item Code:AMSSH-MTX



- The multi step head readily accepts saw blades of bore sizes 1/2", 5/8", 3/4", 7/8" & 1".
- The blades are firmly secured in position with Hex head screw.
- Taper shank- MT3 (M12 thread in shank) & MT2 (M10 thread in shank).

## Slitting Saw Holder- Straight Shank

Item Code: AMSSH-STN

- Suits to small drill and lathe machine for holding small cutters.
- Cutter Holding Diameter: 16 mm & 5/8"
- Shank Size: 10 mm & 3/8"



## Adjustable Swivel Angle Plate

Item Code: AMSAP-XX



- Manufactured from High Grade Casting.
- The Table can swivel from 0 -90 Degrees & can be locked at any angle with the help of screws at each end.
- Graduated in Degrees.
- Precisely ground on all working faces.
- Tee-slots are machined for a clean, precise & better finish.

Prod. Code	BedSize (inch)	Bed Size (mm)	Height (Inches)	Height (mm)
AMSAP-0056	5" x 6"	125 x 150	4-1/2"	115
AMSAP-0068	6" x 8"	150 x 200	5"	125
AMSAP-0810	8" x 10"	200 x 250	6-1/2"	165
AMSAP-1012	10" x 12"	250 x 300	8"	200
AMSAP-1215	12" x 15"	300 x 380	9"	225

## MILLING MACHINE ACCESSORIES

### Tilting Table

Item Code: AMTT-XXXX

**ASSORTS'S  
BEST SELLER**



- Manufactured from High Grade Casting.
- Calibrated 0 - 45 - 0 Degrees
- Precisely ground on all working faces.
- Tee-slots are machined for a clean, precise & better finish.

Prod. Code	Size (inch)	Size (mm)	Height (Inches)	Height (mm)
AMTT-0405	4 x 5	100 x 125	3	78
AMTT-0507	5 x 7	125 x 175	3-3/4	95
AMTT-0710	7 x 10	175 x 250	5	125
AMTT-1015	10 x 15	250 x 380	6-3/4	170

### Collet Adaptors for E Type Collets

Item Code:AMCCA-XXXX

- Very Precise Item made of Tool Steel.
- Fully Hardened & Ground.
- Comes with a C- Spanner'
- Below table is for Drawbar thread type adaptors but we do have same available in Teng type shanks as well.



Prod. Code	Collet Type	Morse Shank	Dia. Nut	Drawbar Thread	Clamping Range
AMCCA-2010	ER-20	Mt2	34	M10	2.0 - 13.0
AMCCA-2510	ER-25	MT2	42	M10	2.0 - 16.0
AMCCA-3210	ER-32	MT2	50	M10	2.0 - 20.0
AMCCA-2012	ER-20	MT3	34	M12	2.0 - 13.0
AMCCA-2512	ER-25	MT3	42	M12	2.0 - 16.0
AMCCA-3212	ER-32	MT3	50	M12	2.0 - 20.0
AMCCA-2516	ER-25	MT4	42	M16	2.0 - 16.0
AMCCA-3216	ER-32	MT4	50	M16	2.0 - 20.0



## Drill Chuck Arbors

Item Code:AMDCA-XX



Prod. Code (Unhardened Ground)	Shank Type	Drill Chuck Mounting	Morse Taper Shank
AMDCA-01	Teng or M6	JT2	Mt1
AMDCA-02	Teng or M6	JT3	Mt1
AMDCA-03	Teng or M6	JT6	Mt1
AMDCA-04	Teng or M6	B16	Mt1
AMDCA-05	Teng or M6	1/2"x20 TPI	MT1
AMDCA-06	Teng or M6	3/8"x 24 TPI	MT1
AMDCA-07	Teng or M10	JT1	Mt2
AMDCA-08	Teng or M10	JT2	Mt2
AMDCA-09	Teng or M10	JT3	Mt2
AMDCA-10	Teng or M10	JT6	Mt2
AMDCA-11	Teng or M10	JT33	Mt2
AMDCA-12	Teng or M10	B10	Mt2
AMDCA-13	Teng or M10	B12	Mt2
AMDCA-14	Teng or M10	B16	Mt2
AMDCA-15	Teng or M10	M12 x 1	Mt2
AMDCA-16	Teng or M10	1/2 x20 TPI	MT2
AMDCA-17	Teng or M10	5/8 x 16TPI	MT2
AMDCA-183/8	BSW x 16TPI	B10	MT2
AMDCA-193/8	BSW x 16 TPI	JT6	MT2
AMDCA-20	Teng or M10	M14 x 1	Mt2
AMDCA-21	Teng or M12	JT1	Mt3
AMDCA-22	Teng or M12	JT2	Mt3
AMDCA-23	Teng or M12	JT3	Mt3
AMDCA-24	Teng or M12	JT6	Mt3
AMDCA-25	Teng or M12	JT33	Mt3
AMDCA-26	Teng or M12	B10	Mt3
AMDCA-27	Teng or M12	B12	Mt3
AMDCA-28	Teng or M12	B16	Mt3
AMDCA-293/8	BSW	B10	MT3
AMDCA-303/8	BSW	JT6	MT3
AMDCA-35	Teng or M12	M12 x 1	Mt3
AMDCA-31	Teng or M12	M14 x 1	Mt3
AMDCA-32	Teng or M12	3/8 x 24 TPI	MT3
AMDCA-33	Teng or M12	1/2 x 20 TPI	MT3
AMDCA-34	Teng or M12	5/8 x 16TPI	MT3

## Speed Guide Circle Cutter for Milling Machines

Item Code:AMSGC-165

- Available in MT 2 & MT3 precisely Grounded Shanks.
- Hard & Ground HSS Cutting Tool Bit.
- Graduated scale showing the Circle Cutter Diameter readings for an easy setting & handy reference of our end users.
- Sturdy Setting of the Graduated scale & the HSS Cutting Bit by simply tightening the Allen screws provided along.
- Minimum Circle Diameter – 38 mm (1.5 Inches) 165
- Maximum Circle Diameter – 165 mm (6.5 Inches)



## MILLING MACHINE ACCESSORIES

### Reversible Tapping Attachments

Item Code:AMRTA-MXX



- A very versatile attachment designed for drilling machines for drilling through and blind holes/ drill with standard taps.
- The automatic reverse mechanism has a double back out speed and the adjustable friction clutch to avoid breakage of taps.
- Available in MT2 and MT3 shanks.
- Offered in different Tap Holding Capacities. Please refer to the Excel below

Product Code	Diameter	Thread Capacity	Shank
AMRTA-M036	1/8" - 1/4"	M3 - M6	MT1
AMRTA-M312	1/8" - 1/2"	M3 - M12	MT2 & 3
AMRTA-M1020	3/8" - 3/4"	M10 - M20	MT2 & 3

### Micro Sensitive Drill Adaptor Miniature Quill with JT0 Drill Chuck

Item Code:AMMDA-JT0

- Quality Tool Steel's Micro Drill Adaptor (Sensitive drill adaptor) or can be called a miniature quill & is designed to drill small holes using a lathe, mill or pillar drill
- Sensitive Finger Control. Controls manual feed pressure very easily, which helps in preventing Drill breakage.
- Very well suited for making small holes with large machines.
- Shank is 1/2" Straight.
- Comes with a small capacity of 0.3 to 4 mm JT0 Drill chuck.





# VICES & WORK HOLDING

## This Section Includes:

Angle Plates  
Bench Vises  
Clamping Tools  
Drill Vices  
Grinding Vices  
Milling Vices  
Vee Blocks



# VICES & WORK HOLDING

## Angle Plates

### Slotted Angle Plates

Item Code: AVSAP-XXX



- ★ Manufactured from close grain cast iron.
- ★ Precision Ground
- ★ Machined Slots for Fixing

Prod. Code	Size (In mm )	Size (In Inches)
AVSAP-075	75 x 50 x 63	3 x 2 x 2-1/2
AVSAP-115	115 x 89 x 75	4-1/2 x 3-1/2 x 3
AVSAP-150	150 x 89 x 125	6 x 3-1/2 x 5
AVSAP-178	178 x 115 x 140	7 x 4-1/2 x 5-1/2

## Vee Angle Plate-Tee Slotted

Item Code:AVVAP-TXXX

- ★ Manufactured from high quality seasoned casting.
- ★ Precision ground to serve as a Vee Block & Angle plate together.
- ★ Multiple Clamping points & 2- Tee Slots for clamping.

Prod. Code	Size (In mm )	Size (In Inches)
AVVAP-T335	3" x 3" x 5"	75 x 75 x 125 mm
AVVAP-T446	4" x 4" x 6"	100 x 100 x 150 mm
AVVAP-T557	5" x 5" x 7"	125 x 125 x 175 mm
AVVAP-T668	6" x 6" x 8"	150 x 150 x 200 mm



## Vee Angle Plate- Slotted

Item Code: AMDSA-BXX



- ★ Manufactured from high quality seasoned casting.
- ★ Precision ground to serve as a Vee Block & Angle plate together.
- ★ Multiple Clamping points.

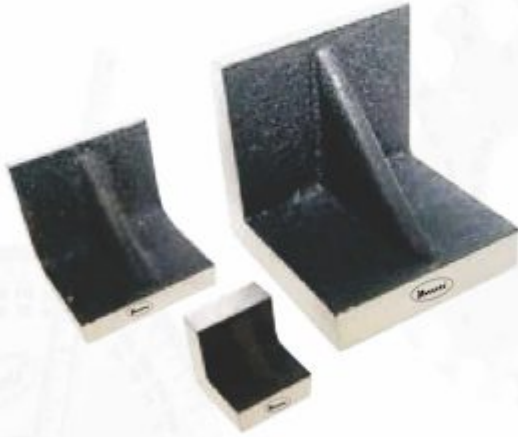
Prod. Code	Size (In mm )	Size (In Inches)
AVVAP-S335	3" x 3" x 5"	75 x 75 x 125 mm
AVVAP-S446	4" x 4" x 6"	100 x 100 x 150 mm
AVVAP-S557	5" x 5" x 7"	125 x 125 x 175 mm
AVVAP-S668	6" x 6" x 8"	150 x 150 x 200 mm



## Solid Webbed Angle Plates

Item Code: **AVWAP-XXX**

- Webbed Solid Angle Plates to provide more rigidity. Made of closed grain cast iron.
- Precision ground on all working sides.



Prod. Code	Size (In Inches)
AVWAP-0111	1" x 1" x 1"
AVWAP-0222	2" x 2" x 2"
AVWAP-0333	3" x 3" x 3"
AVWAP-0444	4" x 4" x 4"
AVWAP-0666	6" x 6" x 6"
AVWAP-0888	8" x 8" x 8"
AVWAP-1010	10" x 10" x 10"
AVWAP-1212	12" x 12" x 12"

## Box Type Angle Plate

Item Code: **AVBAP-XXX**

**ASSORTS's  
New Development  
EXCLUSIVE**

- Manufactured from close grained cast iron.
- Machined & ground square & parallel on all faces.
- Tee slots are machined from solid casting.



Prod. Code	Size (In Inches)	Size (In mm)
AVBAP-075	3" x 2-1/2" x 2"	75 x 63 x 50
AVBAP-100	4" x 3-3/8" x 2-3/4"	100 x 85 x 60
AVBAP-125	5" x 4-1/2" x 3-3/8"	125 x 113 x 85

## Slim Angle Plate

Item Code: **AVSAP-58**



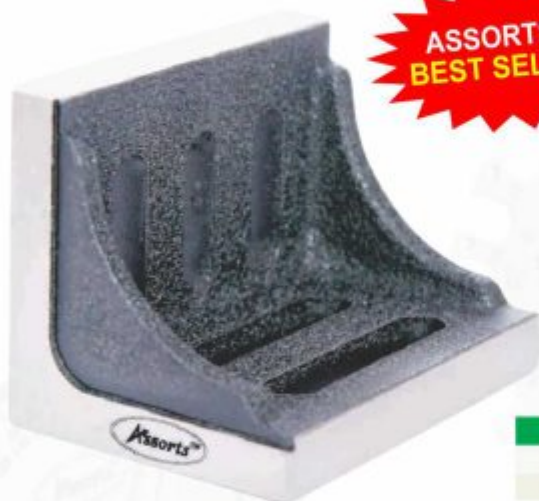
- Myford Lathe Style Slim Angle Plate for using onto a face plate.
- Dimensions: 58mm x 58mm x 150mm long
- 5 Slots of 35 mm Length x 10 mm Width.

# VICES & WORK HOLDING

## Angle Plates

### Webbed Slotted Angle Plate

Item Code: AVWAP-111.X



**ASSORTS'S  
BEST SELLER**

- Manufactured from close grain Cast Iron
- Small Precision ground Angle Plate
- 2 machined slots in each side.
- Very useful when face plates work is required or on small milling machines.

Prod. Code	Size (Inches)	Size (mm)
AVWAP-111.A	2 x 3 x 2	50 x 75 x 50
AVWAP-111.B	3 x 3.5 x 2.5	75 x 88 x 63

### Small Angle Plate for Myford

Item Code: AVRAP-112



- Manufactured from close grain cast Iron & Precision ground.
- Size : 60 mm x 50 mm x 100 mm
- 2 Base Tee slots 10.5 mm wide x 30 mm long
- This size is very useful when face when plate is required or on small milling machines.

## Parallel Clamps

Item Code: AVPC-XXX



- Case hardened jaws - accurately ground on all faces All sizes are equipped with spring clips.
- Extremely useful item for holding jobs during Drilling, Tapping & grinding operations.

Prod. Code	Jaw Length	Jaw Length	Jaw Opening	Jaw Opening
AVPC-050	2"	50	1-1/4"	31
AVPC-060	2-1/2"	60	1-3/4"	44
AVPC-075	3"	75	2-1/4"	57
AVPC-100	4"	100	2-3/4"	70
AVPC-125	5"	125	3-1/2"	89
AVPC-150	6"	150	4-1/2"	114
AVPC-200	8"	200	6"	150



## Clamping Tools

### Universal Jack Screw Set

Item Code:AVJSS-07



- Very versatile 7 pieces tool set due to the no. of attachments along.
- Used for leveling work on planer beds, upright drills & setting up machinery.

### Machinists Mini Jack

Item Code:AVMJ-01

- Made of heavy cast steel.
- Adjustable screw & tilting swivel head and lock nut for permanent positioning.
- Used where leveling is necessary like drill presses, milling machine etc.
- Capacity 3" high, 4" fully extended through



### Hand Vice- Spring Type

Item Code:AVHV-XXX



Prod. Code	OAL (Inches)	OAL (mm)
AVHV- 075	3"	75
AVHV- 100	4"	100
AVHV- 125	5"	125
AVHV- 150	6"	150
AVHV- 200	8"	200

# VICES & WORK HOLDING

## Clamping Tools

### C or G Clamps

Item Code:AVCC-XXX

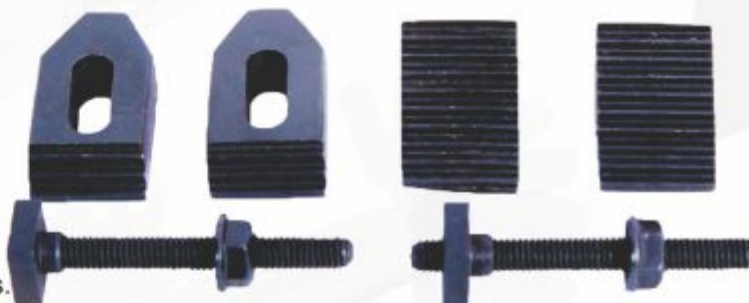


- Heavy Duty Ductile Cast Iron Frame.
- Steel Spindle Screw.
- Use this sturdy C-clamp when you need to firmly hold your metal fabricating or woodworking

Prod. Code	Size (Inches)	Size (In mm)
AVCC-050	2"	50 mm
AVCC-075	3"	75 mm
AVCC-100	4"	100 mm
AVCC-150	6"	150 mm
AVCC-200	8"	200 mm
AVCC-250	10"	250 mm
AVCC-300	12"	300 mm

## Clamp Kits for Rotary Tables

Item Code:AVCKR-MX



- Made of High Quality Tool Steel.
- These are polished & ground from all sides.

Prod. Code	Type	Set Includes
AVCKR-M6	M6	2 Clamps, 2 Blocks, 2 LN Screws of M6 thread with 2 Flange Nuts & 2 Tee-nuts
AVCKR-M8	M8	2 Clamps, 2 Blocks, 2 LN Screws of M8 thread with 2 Flange Nuts & 2 Tee-nuts

## Tee Nuts & Fixing Screws

Item Code:AVTNS-MX



- Tee nuts for our Rotary Tables & Vertical Slide.
- Epoxy Black Finish for rust free life.

Prod. Code	Designed For	Thread Size
AVTNS-M5	Rotary Table 2.75"	M5
AVTNS-M6	Rotary Table 3" & 4"	M6
AVTNS-M8	Rotary Table HV6	M8
AVTNS-M10	Rotary Table HV8	M10



## Clamping Tools

### 24 Pcs Clamp Kit Set- 6 mm for Milling

Item Code:AVCKS-24



- High quality Clamping Kit set of 24 Pieces, which has a wide variety of clamping applications on Face Plates, Cross Slides, Milling Beds & Vertical Slides.
- Clamp has M6 thread.
- For longer clamps: Length 100mm, Slot diameter 7mm, Width 24mm, Thickness 12mm.
- For shorter clamps: Length 65mm, Slot diameter 7mm, Width 24mm, Thickness 12 mm

### Universal Peg Clamp Holder Tool

Item Code:AVUH-50



- The 2" (50 mm) machined aluminium face has 60 holes with 8 loose pegs or pins.
- Jaw opens: 3/4" (Inches)
- The pegs allowed its positioning in the holes to hold any flat, small or irregular shape parts for engraving, carving, filing, stone setting and jewellery making etc.
- Removable handle allows tool to be screwed directly to bench.

## Drill Vices

### Drill Press Vice- Tilting Jaw

Item Code:AVDTJ-XXX



- Both jaws have horizontal and vertical grooves for holding round stock.
- Measures 4" wide x 1 1/4" high, maximum capacity is 3 1/4" and 2 1/2" tall.

Prod. Code	Jaw Width		Jaw Opening		Jaw Depth	
AVDTJ-075	3"	75 mm	2- 1/2"	64 mm	1"	25 mm
AVDTJ-100	4"	100 mm	3-1/8"	80 mm	1-3/16"	30 mm

# VICES & WORK HOLDING

## Drill Vices

### Circular Drill Press Vices

Item Code:AVCDV-XXX



- Body manufactured from close grain high quality caste Iron.
- Jaws are of ground Steel Grade EN-31 of Hardness 48- 52 HRC.
- Mild Steel Handle with Bright Finish & Body painted in synthetic hammertone finish.

Prod. Code	Jaw Width (mm)	Jaw Depth (mm)	Jaw Opening (mm)
AMCDV-063	63	25	70
AMCDV-080	80	28	88
AMCDV-100	100	35	102
AMCDV-120	120	42	150
AMCDV-150	150	50	170

## Drill Vice

Item Code:AVDV-XXX

- Heavy duty cast iron robust construction.
- Jaws has vertical & horizontal vee to hold round stocks.
- Long slots for mounting.



Prod. Code	Jaw Width (mm)	Jaw Depth (mm)	Jaw Opening (mm)
AVDV-063	63 mm	20 mm	55 mm
AVDV-080	80 mm	30 mm	70 mm
AVDV-100	100 mm	30 mm	85 mm
AVDV-125	125 mm	35 mm	110 mm

## Drill Press Vice- Precision

Item Code:AVDPV-XXX

- Manufactured from graded caste iron ideal for engineering workshops and tool rooms.
- The base and slides are precision ground for stability & accurate operation.
- Horizontal & vertical V-grooves in the stationery jaw allows holding of round job securely.



Prod. Code	Jaw Width	Jaw Opening	Jaw Depth
AVDPV-075	3" 75 mm	2-3/4" 70 mm	1-3/16" 30 mm
AVDPV-100	4" 100 mm	4" 100 mm	1-1/2" 38 mm
AVDPV-125	5" 125 mm	5" 125 mm	1-7/8" 48 mm



## Drill Vices

### Unigrip 3 Way Drill Press Vice

Item Code:AVU3W-100



- As the name indicates, 3 way means that it has 3 mounting options available in its design. All mounting sides are precisely ground to provide an accurate setting.
- Allows drilling along all working axis in a single setting of the job & holding a long job which are difficult to manage in an ordinary regular drill vice.

Prod. Code	Jaw Width		Jaw Opening		Jaw Depth	
AVU3W-100	4"	100 mm	3-1/2"	88 mm	4"	100 mm

### Heavy Duty Drill Vice

Item Code:AVRDV-114

- Body manufactured from close grain high quality caste Iron.
- Jaws are hardened & ground of Steel Grade EN31 of Hardness 48 - 52 HRC.
- Base Dimension : 9" x 4-1/2" ( 229 mm x 114 mm)
- Jaw Width : 4-1/2" (114 mm)
- Jaw Opening : 4" ( 100 mm)
- Jaw Depth : 1-5/16" ( 33 mm)
- Mild Steel handle with natural finish & body painted in wrinkle black color.



### Round Base Drill Vice

Item Code:AVRBD-125



- Body manufactured from high quality close grain caste Iron.
- Jaws are hardened & ground of Steel grade EN31 of hardness 48 - 52 HRC
- Mild Steel Handle & Body painted in Black wrinkle finish.
- Jaw Width : 5" (125 mm)
- Jaw Opening : 4" ( 100 mm)
- Jaw Depth : 1-1/2" ( 38 mm)
- Keyway Slot @ sides : 14 mm x 22 mm
- Base dimensions : 10" (Length of Body) x 7" (Broadest portion at Circular

# VICES & WORK HOLDING

## Milling Vices

### 82 mm Nippy Type Milling Vice

Item Code:AVNMV-82



- Manufactured from high grain seasoned cast Iron.
- Jaws are made of EN31 Alloy steel- Hardened & Ground.
- Jaws have vertical & longitudinal Vees making the vice suitable for holding a variety of round & square sections.
- Base Dimensions: 130 mm x 150 mm (Excluding Handle)
- Jaw Width: 82 mm
- Jaw Depth: 20 mm (@ 1st Step/ Lower Jaws) & 30 mm (2nd Step/ Upper Jaws).
- Maximum Jaw Opening: 45 mm
- Suitable for Milling operations or to use as a drill press vice.

## Drill Vice Vise for Milling Vertical slide-Suits Myford & Similar Lathes -Milling Machines

Item Code:AVMDV-44

- The small Loose Insert in the jaws helps to hold irregular work piece's shape.
- The mounting bolt slots on this vice are such that it can be directly mounted to a myford lathe's vertical slide ,both fixed base & Swivel design
- Jaw Width 44 mm
- Jaw Depth : 35 mm Approx
- Maximum Jaw Opening: 30 mm Approx
- Overall Length is 135 mm



## Grinding Vices

### Tool Makers Pin Type Vice

Item Code:AVPTV-XXX

- Manufactured from selected tool steel.
- Fully tempered, Hardened & precision ground as per industry's standards.
- We give hardness 58+1-2 HRC & We keep hardness to 58 +1-2 HRC & commit accuracy for squareness, flatness & parallelism within 0.005 mm.
- Designed to provide maximum holding power & highly repeatable positioning due to their forward & downward clamping action.
- "V" on moveable jaw for better gripping of round jobs



Prod. Code	Jaw Width	Jaw Depth	Jaw Opening	Overall Height	Overall Length
AVU3W-100	75 mm	35 mm	100 mm	65 mm	178 mm
AVPTV-095	95 mm	45 mm	125 mm	90 mm	235 mm
AVPTV-150	150 mm	48 mm	175 mm	95 mm	330 mm



## Grinding Vices

### Lead Screw Type Grinding Vice

Item Code:AVLSV-XXX



- Manufactured from selected tool steel.
- Fully tempered, Hardened & precision ground as per industry's standards. We keep hardness to 58 +/-2 HRC & commit accuracy for squareness, flatness & parallelism within 0.005 mm.
- Hardened clamping screw with square thread & gun metal nut to high performance & long life.

Prod. Code	Jaw Width		Jaw Opening		Jaw Depth		Overall Length	
	Inch	mm	Inch	mm	Inch	mm	Inch	mm
AVLSV-060	2-3/8"	60	2-3/16"	55	15/16"	23	4-5/16"	110
AVLSV-075	3"	75	3"	75	1-9/16"	40	7-7/8"	200
AVLSV-095	3-3/4"	95	4-1/8"	105	1-3/4"	45	9-1/4"	235
AVSLV-150	6"	150	6"	150	1-7/8"	48	11-7/8"	302

### Small Steel Vice 50 mm

Item Code:AVSSV-50

- The Jaws are 50mm Wide x 16 mm Deep.
- Fixing Hole Centre distance in Length x Widthwise direction is 40 mm x 25 mm respectively. It can be changed as per customer's specific requirement as well.
- Perfect to fit on a small vertical slide or any tee slotted base of any table.
- Horizontal & vertical Vee in jaw (1 Side) to hold round job.



### Grinding Steel Vice 60 mm Capacity

Item Code:AVSGV-60



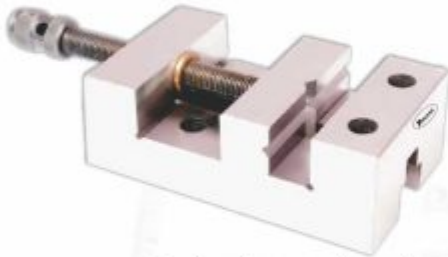
- One of the most popular hardened & ground steel vice of 60 mm Jaw Width.
- Jaw opening 50mm
- Height horizontal 45mm
- Height of body vertical 110mm
- Dimensions 110mm x 85
- Vertical & Horizontal Vees machined in Fixed Jaws.
- Gun-metal bush has been provided for a long life & better performance.
- Can be clamped in our Vertical slide. The fixing holes are milled accordingly.

# VICES & WORK HOLDING

## Grinding Vices

Grinding Steel Vice 88 mm Capacity

Item Code:AVSGV-88

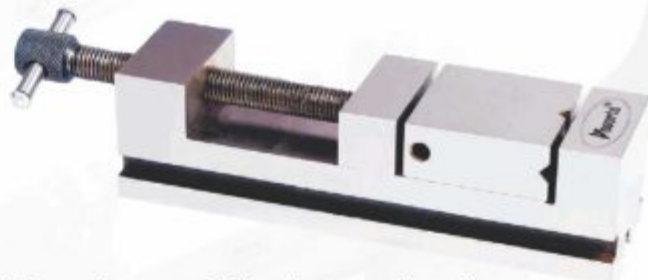


- Another version of our hardened & ground steel vice with higher jaw width of 88 mm.
- Jaw opening 53 mm
- Height Overall 46 mm
- Vertical & Horizontal Vees machined in Fixed Jaws.
- Gun-metal bush has been provided for a long life & better performance.
- Can be clamped in our Vertical slide. The fixing holes are milled accordingly.

Distance between counter bores- 40mm (Width-wise) & 50 mm (Length-wise)

## Tool Makers Multi Purpose Vee-Block Vice

Item Code:AVVBV-125



- Manufactured from selected tool steel.
- Hardened & Precision ground.
- Dimension of vice : 33 mm (Jaw Width) x 125 mm Long excluding the screw length.
- Jaw Opening : 80 mm ( Without the removable Jaw) & 42 mm (with the removable jaw)
- Jaw Depth: 13 mm
- Vee & clamp on reverse side will accept 35 mm diameter job.

## Taper Grinding Vice- Hardened & Ground

Item Code:AVSGV-75



- Hardened & Ground Steel Vice of 75 mm Jaw Width.
- Jaw opening 55 mm
- Jaw Depth 22 mm
- Height horizontal 45 mm
- Dimensions 135 mm x 75 mm
- Vertical & Horizontal Vees machined in moving Jaws.
- An additional piece for taper clamping has been provided.
- Gun-metal bush has been provided for a long life & better performance.
- Can be clamped in our Vertical slide. The fixing holes are milled accordingly.



## Milling Vices

### Swivel Precision Milling Machine Vices

Item Code:AVSMV-XXX

**ASSORTS's  
BEST SELLER**



- Made of close grain high tensile seasoned Cast iron.
- Screw spindle made of tool steel for long life & high performance.
- Fully hardened & ground tool steel jaws.
- Swivel Base is graduated 360 Degrees, in 1 Degree increment, so that vice can be set at any working angle in Y axis.

Prod. Code	Jaw Width		Jaw Opening		Jaw Depth	
	Inch	mm	Inch	mm	Inch	mm
AVSMV-050	2"	50	2"	50	1"	25
AVSMV-075	3"	75	3"	75	1-1/4"	33
AVSMV-100	4"	100	4"	100	1-1/2"	38
AVSMV-125	5"	125	5"	125	2"	50
AVSMV-150	6"	150	6"	150	2-1/8"	53

### Precision Milling Vices- 2 Way

Item Code:AV1WM-XXX

- Manufactured from close grain high tensile seasoned Cast iron.
- Positive locking to withstand heavy loads.
- Screw spindle made of tool steel for long life & high performance.
- Fully hardened & ground tool steel jaws.
- Horizontal swivel base is graduated 360 Degrees & Vertical swivel movement 90 Degrees.

Prod. Code	Jaw Width		Jaw Opening		Jaw Depth	
	Inch	mm	Inch	mm	Inch	mm
AV1WM-050	2"	50	2"	50	1"	25
AV1WM-075	3"	75	3"	75	1-1/4"	33
AV1WM-100	4"	100	4"	100	1-1/2"	38
AV1WM-125	5"	125	5"	125	2"	50



### Precision Milling Vices- 3 Way

Item Code:AV3WM-XXX

**ASSORTS's  
BEST SELLER**



- Manufactured from close grain high tensile seasoned Cast iron.
- Positive locking to withstand heavy loads.
- Screw spindle made of tool steel for long life & high performance.
- Fully hardened & ground tool steel jaws.
- Horizontal swivel base is graduated 360 Degrees in 1 Degree increment.
- Vice has 2 angular slides, one for 45 Degree tilting on both side and another for 90 degree vertical indexing.

Prod. Code	Jaw Width		Jaw Opening		Jaw Depth	
	Inch	mm	Inch	mm	Inch	mm
AV3WM-050	2"	50	2"	50	1"	25
AV3WM-075	3"	75	3"	75	1-1/4"	33
AV3WM-100	4"	100	4"	100	1-1/2"	38
AV3WM-125	5"	125	5"	125	2"	50

# VICES & WORK HOLDING

## Milling Vices

### Universal Machine Vice

Item Code:AVUMV-XXX



- Manufactured from close grained high tensile seasoned cast Iron.
- Screw spindle made of tool steel for longer life.
- Fully hardened & ground tool steel jaws.
- The swivel base is graduated 360 degrees in 1 degree increment. The 3rd angular slide with a moving axis allows any setting in 3D plane.
- Allows the work piece to set at any angle.
- Ideal for tool & cutter grinders.

Prod. Code	Jaw Width		Jaw Opening		Jaw Depth	
	Inch	mm	Inch	mm	Inch	mm
AVUMV-050	2"	50	2"	50	1"	25
AVUMV-075	3"	75	3"	75	1-1/4"	33
AVUMV-100	4"	100	4"	100	1-1/2"	38

## Self Centering Machine Vice

Item Code:AVSSC-XXX



- The Self Centering vice allows for accurate centering of jobs automatically. Perfect to perform a same operation at varying job sizes at a single setting.
- Manufactured from high tensile seasoned cast iron with fully hardened ( 55 +/-3 HRC) and ground tool steel jaws. Rotation of the crank handle automatically adjusts workpiece to the center.
- Spindle has opposite threads for quick & precise centering & then holding of the job.
- Fully graduated 360° swivel base allows the vice to be set at any angle along the vertical axis.

Prod. Code	Jaw Width		Jaw Opening		Jaw Depth	
	Inch	mm	Inch	mm	Inch	mm
AVSSC-050	2"	50	2"	50	1"	30
AVSSC-075	3"	75	3"	75	1-1/4"	33
AVSSC-100	4"	100	4"	100	1-1/2"	38
AVSSC-125	5"	125	5"	125	1-3/4"	45
AVSSC-150	6"	150	6"	150	1-3/4"	45



## Low Profile Self Centering Vice

Item Code:AVSCV- LXXX

**ASSORTS'S  
BEST SELLER**

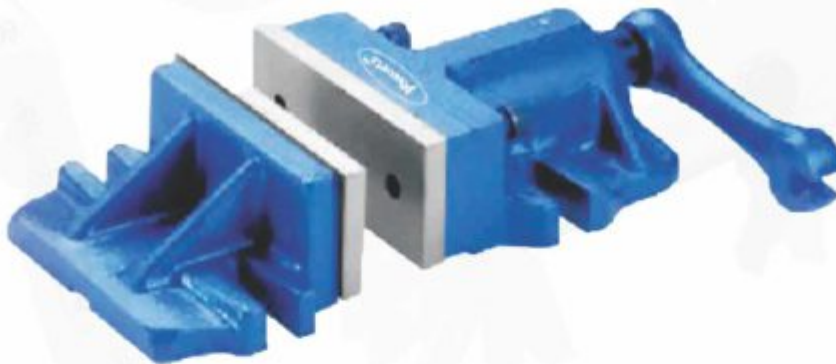


- Manufactured from close grain cast iron with hardened & ground jaws having a horizontal and a vertical Vee cut to hold the round jobs.
- The Self Centering vice allows for accurate centering of jobs automatically.
- Perfect to perform a same operation at varying job sizes at a single setting.
- Spindle has opposite threads for quick & precise centering & then holding of the job.

Prod. Code	Jaw Width		Jaw Opening		Jaw Depth		Jaw Height	
	Inch	mm	Inch	mm	Inch	mm	Inch	mm
AVSCV-L050	2"	50	3-1/8"	80	1-1/8"	28	2-3/8"	60
AVSCV-L080	3-1/8"	80	4-1/2"	115	1-1/2"	38	3-1/8"	80
AVSCV-L100	4"	100	5-1/8"	130	1-1/2"	38	3-1/8"	80

## 2 Piece Milling Table Vice

Item Code:AVMV2- XXX



- Manufactured from close grain high quality casting.
- Jaws are Hardened & Ground.
- Maximises the work area of your milling table & get the maximum spindle to table clearance with this Vice.
- Work locates directly on the bed for extra rigidity.
- Machined key ways enables accurate set-up quickly.

Prod. Code	Jaw Width		Jaw Depth		Key Slot Width		Clamp Travel	
	Inch	mm	Inch	mm	Inch	mm	Inch	mm
AVMV2-150	6	150	3	75	11/16	18	3/8	10
AVMV2-200	8	220	3-1/4	82	13/16	20	5/8	15

# VICES & WORK HOLDING

## Milling Vices

### Modular Machine Vice cum Slotted Table

Item Code:AVMMV-45



- Multi purpose 2 way axis Interchangeable machine modular vice cum slotted table. Details with Vice Assembly
- Jaw Width : 2"
- Jaw Depth: 1"
- Max. Opening: 2"
- Overall Height: 6" Details with Tee- Slotted Table Assembly
- Table Size : 4" x 5"
- Overall Height: 5"
- Tee Slot Width: 5/16"

## Vee Blocks

### Multi Surface V-Block & Clamp Set

Item Code:AVMSVB-33



- Made of Tool steel hardened & precision ground all-angle V-block.
- Has a holding capacity of 1-5/16" (33 mm). Other dimensions are 1-7/8" x 1-7/8" x 3-5/8" i.e. 48 x 48 x 92 mm (Height x Width x Depth)
- This all-angle V-block with clamp has parallel sides and central V to hold metal workpieces for grinding, milling, or drilling.
- Has 4 additional 3/8" tapped holes are 16 tapped for angle non-clamping, 2 in base & 1 on each side.

## Cast Iron Vee Blocks Pair

Item Code:AVCVB-X



- Manufacturing from high quality caste Iron, seasoned to stress releived & ensure dimensional stability.
- Supplied in matching ground pair.

Prod. Code	Width	Height	Thick	Width of Vee
AMECV-3	3"	2-3/8"	1-1/4"	1-7/8"
AMECV-4	4"	2-5/8"	1-5/8"	2-1/4"
AMECV-5	5"	3-1/8"	2"	2-1/2"
AMECV-6	6"	3-1/2"	2-1/2"	3-1/4"
AMECV-7	7"	4-1/2"	3"	3-7/8"
AMECV-8	8"	5-1/2"	3-7/8"	4-3/8"
AMECV-10	10"	6-7/16"	5"	4-5/8"



## V Block Jig Fixture for Center Drilling of a Round Work-piece 2" Capacity

Item Code:AVVJF-50



**ASSORTS's  
New Development  
EXCLUSIVE**

- It is a very important and useful accessory for your Drill Press & Mills.
- It makes drilling through the center of a Round bar or tubing so easy.
- It also works great when you need to hold a Round work-piece for sawing.
- Measures 5" Long x 4" Wide.
- The V-capacity is 2" (50 mm) maximum.
- The lengthwise T-slot width 10 mm gives the freedom of clamping it on any mill/ press easily.
- It is made of Graded Quality CI and much has higher strength than Aluminium version of it.
- Also our supply will have a Precise grounded V and base. The rest of the body shall be black painted.

## Precision Steel Vee Blocks & Clamp Set

Item Code:AMEPV-XX



- Made of heat treated hardened tool steel & precision ground tool maker & machinist Vee-block set with clamp set.
- Vee's are central, parallel & square and matched in pairs.

Prod. Code	L x W x H (Inches)	L x W x H (mm)	Capacity Inch	Capacity (mm)
AMEPV-25	1-5/8 x 1-1/4 x 1-1/4	40 x 32 x 32	1	25
AMEPV-38	2 x 1-1/2 x 1-1/2	50 x 38 x 38	1-1/2	38
AMEPV-35	1-3/4 x 1-5/8 x 1-3/8	45 x 40 x 35	1-3/8	35
AMEPV-38	2-3/4 x 1-3/4 x 1-5/8	70 x 45 x 40	1-1/2	38
AMEPV-38	2-3/4 x 2-1/2 x 1-3/4	2-3/4 x 2-1/2 x 1-3/4	1-1/2	38
AMEPV-54	4-7/8 x 3-1/2 x 2-3/4	125 x 88 x 70	2-1/8	54
AMEPV-35	2 x 1-5/8 x 2	50 x 40 x 50	1-3/8	35
AMEPV-50	3 x 2-1/8 x 2-1/8	75 x 55 x 55	2	50
AMEPV-70	4 x 3 x 3	100 x 75 x 75	2-3/4	70

# Measuring Tools & Equipments

## This Section Includes:

Calipers  
Edge Finders  
Gauges  
Protractor  
Trammel Sets  
Try Squares & Centre Finders  
Vee- Blocks





# Measuring Tools & Equipments

## Calipers

### Wing Type Compass/ Divider

Item Code:AMEWD-XXX



- Manufactured from high quality carbon steel with a polished finish.
- Points are hardened for increasing wear resistance.
- Quick release & lock.
- Used for scribing circle or arc in a layout work.

Prod. Code	Size (In Inches)	Size (In mm)
AMEWD-100	4"	100
AMEWD-150	6"	150
AMEWD-200	8"	200
AMEWD-250	10"	250
AMEWD-300	12"	300
AMEWD-400	16"	400
AMEWD-450	18"	450
AMEWD-600	24"	600

### Inside Caliper

Item Code:AMEIC-XXX

- Manufactured from high quality carbon steel with a polished finish.
- The legs are made from carefully selected flat stock with heat treated points for durability, and they pivot on a roller while the bow spring ensures a precise tension setting.
- Accurate adjustments are made by turning the knurled nut on the threaded rod.

Prod. Code	Size (In Inches)	Size (In mm)
AMEIC-075	3"	75 mm
AMEIC-100	4"	100 mm
AMEIC-150	6"	150 mm
AMEIC-200	8"	200 mm
AMEIC-250	10"	250 mm
AMEIC-300	12"	300 mm



### Jenny (Hermaphrodite) Caliper

Item Code:AMEJC-XXX



- Manufactured from polished tool steel.
- Designed to locate the centre of a round or square section.
- Also used for marking off a constant distance from an edge.
- One leg holds an adjustable point & the other leg features a location lug.
- Points are hardened to enhance wear resistance.

Prod. Code	Size (In Inches)	Size (In mm)
AMEJC-100	4"	100 mm
AMEJC-150	6"	150 mm
AMEJC-200	8"	200 mm
AMEJC-456	4", 6" & 8"	100, 150 & 200

# Measuring Tools & Equipments

## Outside Calipers

Item Code:AMEOC-XXX



- Manufactured from high quality carbon steel with a polished finish.
- The legs are made from carefully selected flat stock with heat treated points for durability, and they pivot on a roller while the bow spring ensures a precise tension setting.
- Accurate adjustments are made by turning the knurled nut on the threaded rod.

Prod. Code	Size (In Inches)	Size (In mm)
AMEOC-075	3"	75 mm
AMEOC-100	4"	100 mm
AMEOC-150	6"	150 mm
AMEOC-200	8"	200 mm
AMEOC-250	10"	250 mm
AMEOC-300	12"	300 mm

## Spring Calipers- Divider

Item Code:AMEDC-XXX

- Manufactured from high quality carbon steel with a polished finish.
- The legs are made from carefully selected flat stock with heat treated points for durability, and they pivot on a roller while the bow spring ensures a precise tension setting. Accurate adjustments are made by turning the knurled nut on the threaded rod.
- The design of these calipers, with their fine adjustment feature, ensures quick and positive settings when taking or transferring specific measurements.

Prod. Code	Size (In Inches)	Size (In mm)
AMEDC-075	3"	75 mm
AMEDC-100	4"	100 mm
AMEDC-150	6"	150 mm
AMEDC-200	8"	200 mm
AMEDC-250	10"	250 mm
AMEDC-300	12"	300 mm



## Wing Compass w/ Pencil Holder

Item Code:AMEPC-XXX



- Manufactured from high quality carbon steel with a polished finish & features a strong pivot point that will penetrate the wood surface.
- The pencil holder at the tip of the leg ensures stability and accuracy, as well as making nearly any length of pencil usable.

Prod. Code	Size (In Inches)	Size (In mm)	Will draw Circle
AMEPC-200	8"	200	Of Dia. 20"
AMEPC-300	12"	300	Of Dia. 32"



### Edge Finders

#### Edge Finder Set of 5 Pcs.

Item Code:AMEEF-05



- Helps to quickly locate working edges, shoulders, grooves, center points and scribe lines.
- Hardened, ground and lapped to close tolerances for diameter and concentricity
- Cone Double End 1/2" x 3/16" Single End 3/8" x 3/16" .A great time saving tool
- Available in Metric Sizes as well

#### Edge Finder Shank 10 mm Probe 4 mm

Item Code:AMEEF-10



- Very High Quality finished Milling Machine tool precision ground to meet top Industrial standards.
- Shank: 10 mm
- Probe : 4 mm
- Total Length : 90 mm

#### Wiggler Edge Center Finder Set

Item Code: AMEWS-05



- Set includes a wiggler chuck to hold ball contact, disc contact & needle point attachments and an offset indicator holder.
- Very useful item for locating application points on milling & other machines.
- Comes in a beautiful wooden case styrofoam packaging.

# Measuring Tools & Equipments

## Gauges

### Depth Gauge

Item Code:AMEWS-05

ASSORTS'S  
BEST SELLER

ITEM : 6" / 150 MM ENGINEER'S DEPTH GAUGE

\* POWDER COATED BODY. LASER MARK GRADUATIONS



- Very precise, useful and good quality product. The scale is laser marked to 150 mm ( 15 cms) on one side & 6" on other side.
- The holder has working angles of 15, 30 & 45 Degree markings as well at which the scale can be locked as per customer's needs.

### Radius Gauge

Item Code:AMERG-17



- Metric Radius gauge set with Inside & Outside gauges having total 34 leaves in total.
- 17 leaves each of Concave & Convex Blades & a locking screw, for checking the arc of circle.
- Size Range : 1- 7 mm includes 1, 1.25, 1.5, 1.75, 2, 2.25, 2.5, 2.75, 3, 3.5, 4, 4.5, 5, 5.5, 6, 6.5 & 7 mm.

### Thread Gauge

Item Code:AMEWS



- Very useful & precise tool to determine threads per Inch when measuring Bolts, nuts, & other hydraulic fittings.
- Available in Imperial as well as Metric standards.
- These are also helpful in determining which tap or Die to use or what pitch thread file to use when re-threading spindles, nuts & bolts.
- Available in option of various pitch sizes, blades & standards



## Gauges

### Brass Depth Gauge

Item Code:AMEBDG-XXX



- Profile Depth Gauge made of Brass material.
- Features dove tail guiding & vernier reading.
- Surface is finely grounded.

Prod. Code	Size Capacity
AMEBDG-030	0 - 30 mm
AMEBDG-050	0 - 50 mm

### Protractor Cum Depth Gauge

Item Code:AMEPDG-X

- Manufactured from stainless steel.
- Very useful instrument for measuring the depth & angle.
- Graduations are marked with laser marking.

Prod. Code	Description
AMEPDG-RD	Round Protector cum Depth Gauge
AMEPDG-RT	Rectangular Protector cum Depth Gauge



## Bore Gauges

Item Code:AMEBG-XXX



- Manufactured from stainless steel.
- Useful gauge for measuring bores of cylindrical bores.
- Graduations are marked with laser marking machine.

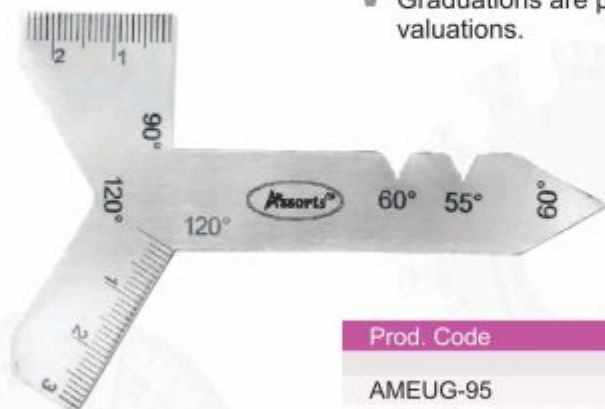
Prod. Code	Range (Inches)	Range (mm)
AMEBG-142	1/16" - 5/8"	2 mm- 16 mm
AMEBG-143	5/8" - 1-1/8"	15 mm- 30 mm
AMEBG-144	1-1/4" - 1-3/4"	30 mm- 45 mm
AMEBG-3S	Set of Above 3 Gauges	

## Measuring Tools & Equipments

### Universal Grinding Gauge

Item Code:AMEUG-95

- Manufactured from high quality stainless steel.
- Measures square & hexagonal angles of 120, 118, 90, 60 & 55 Degree.
- Used as a twist drill gauge & thread gauge.
- Graduations are properly marked with a lazer marking machine for true valuations.



Prod. Code	Overall Length	
	Inch	mm
AMEUG-95	3-3/4	95

### Wire Gauges

Item Code:AMEWG-XX

- Manufactured from stainless steel.
- Available in S.W.G & A.S.G. Standard
- Very useful for measuring thickness of the wires.

Prod. Code	Description
AMEWG-RD	Round
AMEWG-RT	Rectangular



### Twist Drill Gauge

Item Code:AMETDG-114

- Manufactured from high quality stainless steel & polished finish.
- Used for twist drills with an angle of 118 Degree upto length of 2" (50 mm)



Prod. Code	Overall Length	
	Inch	mm
AMETDG-114	4-1/2	114



## Gauges

### Drill Gauges

Item Code:AMEDG-XXX

**ASSORTS's  
BEST SELLER**



- Manufactured from high quality stainless steel & body is polished.
- Graduations are properly marked with a lazer machine for true valuations.

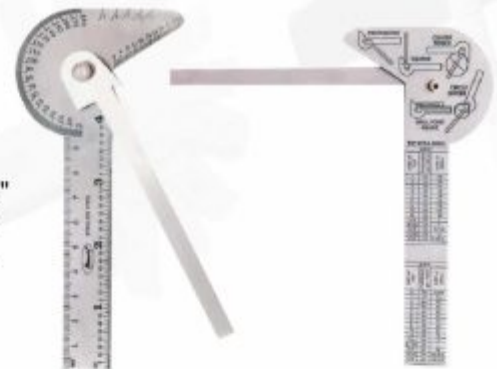
Prod. Code	Size
AMEDG-130	1/16" - 1/2"
AMEDG-131	1 - 13 mm

### Multi Purpose Universal Gauge

Item Code:AMEMPG-5

**ASSORTS's  
BEST SELLER**

- A multi purpose Measuring, & Marking pocket rule cum gauge which serves 5 distinct functions of a Center Finder, Bevel protector, a 4-3/4" Ruler with 1/64" graduations, 9.8 mm Ruler with 1 mm graduations, a circle divider & a Drill point gauge for checking 59 degree drill points.
- Etched stainless steel body includes a tap drill reference chart.



### Pocket Clip Depth Gauge cum Ruler

Item Code:AMEPG-150



- A 6" stainless steel pocket ruler cum depth gauge with a sliding clip to hold in a pcket like a pen.
- Etched in graduations in 1 mm & 1/64th of an Inch increements.

# Measuring Tools & Equipments

## Screw Cutting Gauge

Item Code:AMESG-152



- Manufactured from hardened and polished steel to check BA, Whitworth and BSF, Acme & American Screw threads.
- Angles
  - 60 Degrees - American and Metric
  - 55 Degrees - Whit and BSF
  - 47- 1/2 Degrees BA & 14-1/2 Degrees Acme.

## Centre Angle Gauge

Item Code:AMECF-60

- Manufactured from stainless steel.
- This small gauge of angle 60 degree is very useful for setting thread cutting tools, used for checking the pitch of threads through permanently deep etched graduations in 14ths, 20ths, 24ths and 32nd of an inch.
- There is one more gauge of angle 55 degrees in this type and both these meet the American national or US 60 Degree, Whitworth or English 55 Degree specifications.



## Protractor

### D-Protractor

Item Code:AMERDP-02



- Stainless Steel & Polished Body
- Features to move from 0 to 180 Degree.
- Graduations markings are properly done with a lazer machine for accurate measurements.



### Round Head D Protector

Item Code:AMERHP-01



- Stainless Steel & Polished Body
- Features to move from 0 to 180 Degree.
- Graduations markings are properly done with a lazer machine for accurate measurements.

### Rectangular Head Brass Nut

Item Code:AMERHP-03

- Stainless Steel & Polished Body
- Features to move from 0 to 180 Degree.
- Graduations markings are properly done with a lazer machine for accurate measurements.



### Trammel Sets

#### Clamp-On Trammel Set

Item Code:AMECTS-32



- Manufactured from high quality cast Iron & comes in a Black epoxy finish for lasting protection.
- Have capacity to accept beam upto 1-1/8" thickness by any width or length.
- One end has a hardened steel point to act as a Pivot & the other in the pair has been designed to clamp a pencil as an additional optional use.

## Measuring Tools & Equipments

### Trammel Sets



- Made from high quality steel & comes in a bright chrome finish.
- Extremely useful for Draftmen, Toolmaker's & Machinists.
- Used for marking & Checking radius which are outside the capacities of ordinary dividers.
- The trams are spring secured so they will not slide when the adjusting screws are loosened

Prod. Code	Length of Trammel	Scribe Diameter
AMESBT-251A	10-1/2" Long	18"
AMESBT-251B	14-1/2" Long	26"
AMESBT-251C	20" Long	36"

### Try Squares & Centre Finders

#### Center Finder Squares

Item Code:AMECF-XX

- Made from ground tool steel & has a hardened and tempered blade.
- Used for finding centers on any round work piece by placing the job between the Centre Square. Scribing lines on work-piece changing the position. The co-inciding lines will form a centre of the work-piece.
- Supplied in a wooden box.



Prod. Code	Description
AMECF-38	1-1/2" (38 mm) Diameter
AMECF-75	3" (75 mm) Diameter
AMECF-S2	Set of Above 2 Center Finders



#### Round Bar Centre Finder

Item Code:AMEBCF-55



- An effective tool for use with drilling or milling machines for location of centreline of Round bar.
- 3/8 Inch shank fits collet or 3 jaw chuck.
- Suitable for bar up to 55 mm Diameter.

## Try Squares & Centre Finders

### Wide Base Try Squares

Item Code:AMEWTS-XXX



- Manufactured from Stainless steel Square.
- High Precision & ground.

Prod. Code	Dimensions
AMEWTS-085	80 mm x 50 mm
AMEWTS-163	100 mm x 63 mm

### Steel Precision Try Square

Item Code:AMETS-XXX

- Very useful item for workshop's engineer's.
- Stock is Precision Ground & Steel blades are hardened ground finish.
- Workshop as well as A grade squares are offered.
- Sets are supplied in good quality finish wooden box.

Prod. Code (A Grade)	Blade Length (Inch)	Blade Length (mm)	Stock Length (Inch)	Stock Length (mm)
AMETS-050	2	50	2	50
AMETS-075	3	75	2-1/2"	60
AMETS-100	4	100	3	75
AMETS-150	6	150	4	100
AMETS-200	8	200	5	125
AMETS-225	9	225	6	160
AMETS-250	10	250	6	160
AMETS-300	12	300	8	200
AMETS-450	18	450	10	250
AMETS-600	24	600	13	330
AMETS-915	36	915	17.5	445



### Brass Vernier Caliper

Item Code:AMEBVC-XXX



- Pocket vernier caliper made of Brass.
- Graduated in Inches & mm sizes.
- Stepped jaw construction for inside & Outside measurement.

Prod. Code	Range of Vernier
AMEBVC-075	0 - 3 Inches ( 0- 75 mm )
AMEBVC-100	0 - 4 Inches ( 0- 100 mm )



## Measuring Tools & Equipments

### ASSORTS 8-Inch Stainless Steel Try Square

Item Code:



- Stainless steel etched Blade stops any rust or corrosion.
- Heavy duty aluminium stock rivetted to Blade at perfect 90 Degree.
- Standard Inch as well as mm graduations.

### 6 Pcs Telescopic Gauge Set Micrometer Measurement Bore (8 to 150 mm) Engineers Kit

Item Code:AMETG-6S

- 6pcs 8-150mm Telescopic Gauge Set
- Micrometer Measurement Bore Engineers Kit
- Material: Hardened tool steel
- Size: As pictures shown
- Under uniform spring tension, the plunger of the gage expand from the center to the diameter of the hole or width of slot being measured and then locked in place by a knurled knob, the hole size is found by measuring over the two contact point with a micrometer or caliper.

#### Features:

- Double action rigid handle with self centering feature for quick checking of holes, slots
- and recess up to 6 inch deep - The ends of both contact are head treated stainless steel and precision
- ground to a radius to allow proper clearance on the smallest hole the gage will enter
- Package Included: 1x6pcsTelescoping Gages



### Feeler Gauge - Metric

Item Code:AMEFG-26M



**ASSORTS's  
BEST SELLER**

- A must gauge for checking valve tolerances, points gaps and other critical measurements.
- 26 flexible steel blades in metric size measurements covering 0.03 -1.00 mm
- Available Imperial Standards also.
- Compact steel frame fits into any tool bag and most pocket sizes.

### Hard Wood Polished Drill Stand Metric & Imperial Drill Standard Sizes

Item Code:AMEWDS-X

- High Quality Drill Stand having capacity of holding 28 different drill sizes starting from 0.5 to 14 mm in case of Metric Standards & 29 drill sizes starting from 1/16" to 1/2" in case of Imperial Standards.
- Hard Wood, Well Finish and Polished.
- Proper Etching of Drill sizes by Laser marking machine for the users convenience to avoid any mix up.
- Listed picture is of Metric Sizes but it is available in Imperial Drill sizes as well.

**ASSORTS's  
New Development  
EXCLUSIVE**



# Jewellery & Watch Making

## This Section Includes:

Anvils

Dapping & Doming Steel Punch Sets & Blocks

Eye Loupes

Hammers

Hand Vises (Vices)

Pin Chucks

Watch Case Opener





# JEWELLERY & WATCH MAKING

## Wooden Ring Inside Outside Clamping Holding Hand Tools

Item Code:AJWRH-X

Item A- Ring Clamp Holder Hand Tool



Item C - Single End Ring Clamp Holder 6"- Leather Lined Jaws Jewelry Making Tool



Item B- Outside Ring Clamp Holder- Large & Small Rings-Jewelry Working

Made of Hardwood, Its a must set for every jeweler whrther for making or repair job. These clamps can be used for various jobs of inside and outside holding of Rings or other delicate jewelry parts.

### Item A- Ring Clamp Holder Hand Tool

#### Specifications

- Holds Ring without marring
- Ring Clamp measures 6" Long
- Leather Jaws at Both Ends. Solid Construction- Metal Hinged.
- Jaw Width -1" Approx
- Item B- Outside Ring Clamp Holder- Large & Small Rings-Jewelry Working

### Item B- Outside Ring Clamp Holder- Large & Small Rings-Jewelry Working

#### Specifications

- Holds Ring on the outside in either of the 2 semi circular grooves. This feature gives a full access to the inside surfaces of large or small ring for polishing and any other engraving or texturing processes.
- Overall Length: 7-3/4" Inches with 2 grooves for Ring holding
- Item C - Single End Ring Clamp Holder 6"- Leather Lined Jaws Jewelry Making Tool

### Item C - Single End Ring Clamp Holder 6"- Leather Lined Jaws Jewelry Making Tool

#### Specifications

- Clamp Length 6"
- Leather Lined Jaws
- Jaw Width: 1" &
- Jaw Capacity : 1/4" Thick Approx

## Mini Pick Up Hand Tool with Prongs

Item Code:AJMPT-X

- This small but very useful hand tool comes with 3 and 4 wire prongs for positive secure gripping of small parts for picking, positioning them, and getting into difficult area.



## Anvils

### Double Horn Anvil

Item Code: AJDHA-01



- Has one flat tapered & one round tapered horn each side.
- Has a hole on top for riveting on flat tapered horn.
- Made from steel & plated to chrome finish.
- Length : 4 1/4" & Height : 1- 3/4"



## Dapping & Doming Steel Punch Sets & Blocks

### Dapping Punches & Block Set of 24 Pcs

Item Code: AJDPS-24



- All components are hardened & precision ground steel with great finish for extra-ordinary results.
- Set includes 24 Punches ranging from size 3 mm to 50 mm.
- Includes a Square block of 65 mm (2-1/2") having 26 half squares of corresponding dapping punches in the set.
- Supplied along with a wooden stand having sizes mentioned against each hole for the easy convenience of the end user.

### Dapping & Doming Punch Set with Block Set- 36 Pcs

Item Code: AJDPS-36



- All components are hardened & precision ground steel with great finish for extra-ordinary results.
- Set includes 36 Punches ranging from size 3.5 mm to 25 mm
- Includes a Square block of 60 mm (2-3/8")
- Supplied along with a wooden stand having sizes mentioned against each hole for the easy convenience of the end user.

# JEWELLERY & WATCH MAKING

## Dapping Punches & Block Set of 8 Pcs

Item Code: AJDPS-08



- All components are hardened & precision ground steel with great finish for extra-ordinary results.
- Set includes 8 Punches ranging from size 5 mm to 27 mm.
- Supplied along with a wooden stand having sizes mentioned against each hole for the easy convenience of the end user

## Eye Loupes

### Eye loupe Magnifier

Item Code: AJMEL-X

- Code: AJMEL- A # Head Band Type Eye Loupe
- Code: AJMEL- B # Eyelouper with a flash light
- Code: AJMEL- C # Pocket Folding Magnifier.
- Available in all standard magnifying power lenses.



## Watch Case Opener

### Watch Case Opener- Jaxa Style

Item Code: AWCP-J1



- This new case wrench, commercially called Jaxa Style Case Opener designed to open cases of bigger watch to accommodate sizes up to 55mm diameter.
- Includes 4 sets of pins (round, flat, square & curved) to open all Types of threaded cases., which are generally found in waterproof watches. These set of pins are selected to match the precise notch pattern on the caseback
- The Tool's large handle rotates to adjust the bottom pin, and the thumbwheel in the middle adjusts the two pins above.

### Multi Face Texturing Hammer

Item Code: AMTH-9

- Designed to create pinpoint textures in a certain area.
- Total 9 textures are included & each Tip is easily and securely attached with a thread collar.
- Each Tip Diameter is approx 3/4" & Overall Length of Hammer is 9- 1/2"



### Hobby Hammer with Interchangeable Tips

Item Code: AHHIT-4

- Hobby hammer with 2.5 oz. steel head & a steel handle with knurled body aluminum grip.
- 6 Loose screw-on tips includes a brass flat, steel tapered, steel ball, steel dome, steel flat & plastic flat.
- Use for driving pins and mini nails, and for forming sheet metal.
- Overall length : 7 -1/2"



### Multi Face Texturing Hammer

Item Code: AMTH-9



- Made from special grade of plastic round head, toughened.
- Special application in automobile service centre for removing dry dents & light maintenance work.

Product Code	Diameter
AJSFH-20	20
AJSFH-25	25
AJSFH-30	30
AJSFH-40	40
AJSFH-50	50



# JEWELLERY & WATCH MAKING

## Hand Vises (Vices)

### Mini Hand-Vice

Item Code: AJMHV-13



- Small Hand Vice is designed for a wide possible applications from Jewellery to Precision joinery work.
- Clamp jaws are hardened steel.
- Vise allows wire of thickness from 0.05 upto 3/32 Inch to hold and pass through the hollow handle and tightening screw.
- Jaws Width: 3/8 Inch
- Overall Length: 5 Inches

## Pin Chucks

### Pin Chucks Set Capacity 0-4 mm

Item Code: AMEPC-04

- Suitable for an accurate drilling & tapping,
- Perfect for the jewellery, craft and model maker.
- Knurled grip for better hand use.
- Can also be held in drill chuck or lathe chuck.
- Capacity 0- 4 mm ( 0- 0.8mm, 0.8 - 1.3 mm, 1.3 - 3.1 mm, & 3.1 - 4.8 mm)



### Pin chuck Set

Item Code: AMEPC-03



- Designed for holding small drill in drilling machine.
- Overall length 2-1/2 Inches
- Set includes 3 interchangeable collets of below sizes
  - Collet 1 : 0 to 1/32" (~ 0 to 0.80 mm)
  - Collet 2 : 1/32" to 1/16" (~ 0.80 to 1.5 mm)
  - Collet 3 : 1/16" to 3/32" (~ 1.5 to 2.5 mm)

## Adapter Pin Chuck Set

Item Code: AJAPC-02



- Can be called as micro drill chuck pin vise set.
- Comes with 2 collets of below capacities:
  - Collet 1: 0 - 1/16" (~ 0 to 1.5 mm).
  - Collet 2: 1/16" - 3/32" (~ 1.5 to 2.5 mm)
- Shank size is 3/32".
- The shaft has hole for bolster pin for extra leverage.
- Hardened tool steel with Anti-corrosion black oxide finish; 2-1/2"L, 1-1/4" above collet

## Wooden Cupola Punch & Die Set

Item Code: AJWDPS-6

- High Quality Wooden Cuploa Punch & Die Set of 6 pieces.
- Head Diameter of the Mushroom Shape Punches are 40, 45, 50, & 60 mm
- Double sides Die heads on the wood base-2 on each side, means a total of 4 different sizes.
- Cup Depression Die on 1 side are of 1-3/8" & 1-3/4" &
- Cup Depression Die on 2nd Side are of 2" & 2-1/2"
- Base Size : 4-1/4" (Length) x 9-5/8" (W) x 1-1/8" (Height)



## 10 Pcs. Wooden Dapping Block Set Incl. Wood Punches

Item Code: AJWDP-10



- 10 Piece Wooden Dapping Puncher Block Set
- This includes hardwood block and 10 wood mushroom shape punches of size range 16-65 mm in diameter (5/8" to 2-1/2" Inches).
- The Block has 10 half Spheres on 2 sides to accomodate each size punch included in the set.
- Wooden block size: 3-3/4" (Length) x 7.0" (Width) x 1-3/4" (Height)

## 56pc Jumbo Doming Block Swage Punch Set-Dapping Die Jewellers Tool

Item Code:AJDPS-56



- Incredible multi-purpose set provides design versatility.
- Set comprises of a horn anvil with a base, a 2.5" swage block and punch set, a 8" long steel bending block and a set of 36 doming punches with sizes marked on the storage block.
- The set comprises: 2.5" steel bending grooving block with 6 unique sides and 22 different grooves. One triangular angled forming rod @45 degrees Five square forming rods 2,3,4,5 and 6mm Ten cylindrical forming rods 2,3,5,7,10,11,15,18,21 and 24 mm

## 40 Pc. Jumbo Steel Doming Block Swage Dapping Punch Set Jewellers Tool

Item Code:AJDPS-40



**ASSORTS'S  
BEST SELLER**

***Incredible multi-purpose set provides design versatility.***

- 36 Dapping punches ranging in diameter from 3.5mm to 24.5 mm
- 2.5" Inches (62 mm) Cube dapping die with 21 depressions, 4.5 mm to 45 mm
- Steel Forming Block (62 x 62 x 50mm) with half-round, flat, and right-angle grooves
- Half-Round Bending Block with 10 grooves, 5 mm to 22 mm in width
- Flat dapping die (5" x 2.5" x 1") with 27 depressions, 2 mm to 24 mm diameters
- Supplied with a Wooden base



## Soft Face Hammer with Handle

Item Code:AJSFH-XX

- Made from special grade of plastic round head, toughened.
- Special application in automobile service centre for removing dry dents & light maintenance work.



Prod. Code	Diameter
AJSFH-20	20
AJSFH-25	25
AJSFH-30	30
AJSFH-40	40
AJSFH-50	50

## Swiss Style Riveting Hammer for Jewelers

Item Code:AJHSR-XX

- Riveting hammer available in Head Diameter 50 and 60mm
- Made from metal with a wooden handle.
- These hammers are a very light weight and used when when securing rivet ends.
- The heads are relatively small to allow for precision. This hammer is very adaptable in the working environment, since it can stretch wires, making flat-headed rivets and many other uses.



## Wooden Ring Mandrel Wood Ring Stick Sizes 3-15

Item Code:AJWRS-315



- Wooden Ring Mandrel in 2 different handle shapes made of hardwood.
- Stick Size 3- 15 mm
- Overall Length 320 mm including handle.

## Pearl Drilling Vise

Item Code:AJPDV-01



- Holds all popular size pearls securely in position for drilling.
- knurled lock nuts provide quick clamping & releasing action.

## Jewelers Piercing Saw Blades

Item Code:AJPSB-144



- Great for sawing metal and other hard materials.
- This Set is the perfect tool for sawing metal, tough plastic and other hard materials
- The secure wooden handle ensures your comfort while in use.
- 144 blades are designed to allow you to make the careful and detailed cuts you need time and time again
- 24 blades size 1/0 saw blades
- 24 blades size 2/0 saw blades
- 24 blades size 3/0 saw blades
- 24 Blades size 4/0 saw blades
- 24 Blades size #1 saw blades
- 24 Blades size #2 saw blades

## 9.25 Inches Wooden Ring Mandrel Wooden Wax Removing Ring Stick Sizes 1-14

Item Code:AGWRS-9.25

- Wooden Ring Sizer Gauge Stick 1 to 33 with Blade
- Length 9.25"



## Ring Stretcher Enlarger Reducer Jewelry Bench Repair Tool Machine

Item Code:AJRSR-BLM



### FEATURES

- 2 in 1 Heavy duty Ring stretcher & reducer for quickly resizing your rings and bands.
- Vertical mandrel for enlarging rings
- Smooth reducing plate
- Suitable for any jewelry repair store or for personal use.
- Maximum enlarging: 0-5 mm (\*\*\*)Generally this tool fixture will not expand more than 1 finger size.)

### SPECIFICATIONS

- Dimensions: 17- 1/2" x 7-1/4" x 4-1/4"
- Stretches and Reduces Rings & Bands
- Size Range: Rings & Bands 1-15
- Reversible Base Plate Reduction Die
- Ring Expander utilizes a 4 segment spline enlarging system to uniformly enlarge rings.
- Sizes H to Z wedding rings from 8 reversible holes
- The base has to firstly be secured to your work surface by screwing it down with long screws or nuts and bolts on to a work surface (not supplied).

Ring sizer featuring Swiss (1- 36), French (41-76), German (13.0-24.2) & U.S (1-15-) finger sizes

Item Code:AJRS-36



- International Sizes Ring sizer featuring Swiss (1- 36), French (41-76), German (13.0-24.2) & U.S (1-15-) finger sizes
- Quality Bright Chrome Finish for Rust Free Life.

## Metal Ring Mandrel Sizer Multi National Size Chart

Item Code:AJMRS-36

- Quality Metal Ring Sizer Stick Madnrel
- Different Size Charts on same mandrel
- OAL is 235 mm
- Easy to use
- The aluminum ring stick includes
- US sizes 1-15 in 1/4" increment
- International sizes 1-36
- EU sizes 41-76
- Metric sizes 13-24mm
- Material: Aluminum
- Color: Silver



## Swivel Head Pin Drill Vice -Vise 0 to 2.8 mm

Item Code:AJSHPV-2.8



- A swivel head four way pin vice with swivel head for comfort & ease of use.
- Two reversible collets that can take the following 0-1.2, 1.3-2.4, 0.8-2.0, 1.8-2.8 mm.
- This pin vice is made of alloy tool steel.
- Perfect for jewellery making and modelling, model railways, model engineering, and all small precision projects.



# JEWELLERY & WATCH MAKING

## Easy Palm Grip Pin Vice- Vise

Item Code:AJPGV-03



- A Quality palm grip small handy vice with comfort shape handle
- This palm grip pin vice has two steel collets.
- Handle is made of wood, shaft and heads made of steel.
- Capacity is 0 to 1mm & 1.4 to 3mm total length 70 mm approx.

## Archimedes Spiral Push Drill Capacity 0 - 2.0mm

Item Code:AJASPD-02

- A quality hand drill supplied with 2 collets offering a drill bit capacity of to Supplied with two collets offering a drill bit capacity of 0 to 2 mm
- Tool is operated by pressing the body in the downwards position.
- Approx 185 mm length
- Ideal for precision drilling
- Great for hobby and crafts



## Archimedes Pump Action Precision Hand Tool for Drilling Pinning

Item Code:AJAHP-01



- Archimedes Pump Action Precision Hand Tool for Drilling Pinning
- Brass Finish
- Easy to use spring action.
- Push on Mechanism to turn drill
- Suitable for bits upto 1 mm
- Approx 95 mm long

## Double Ended Pin Vises Jewelry Watch Tool Silver

Item Code:AJDSV-03

- Double end pin vise has steel collets in each end.
- Great for holding drill bits, reamers, needle files, screws, taps, wires, even pins.
- Accepts broken saw blades for wax filing.
- Steel Capacity: (0~0.8mm & 2~3mm)
- Accepts broken saw blades for wax filing
- Also can be used as a screwdriver with small screwdriver blades
- OAL 95 mm



## Double Sided Pin Vise

Item Code: AJDSV-013



- This Double Ended Pin Vise comes with reversible collets on each end in sizes 0.1mm to 3mm and 0.5mm to 2mm.
- This unit provides a knurled body for a firm grip and hex nut heads for firm tightening. Special uses include wire gauge drills,
- Chrome Plated
- Overall Length 85 mm

## Round Plastic Ball Handle Swivel Head Pin Vise 0 - 2.5 mm Capacity Collets

Item Code: AJBHPV-25

- Pin Vise Round Plastic Ball Handle Swivel Head Pin vise Holds 0-2.5mm 2 Collets
- Knurled Fingertip Grip Collet for Control
- Two Collets for Drill 0" to 3/32" (0 to 2.5 mm) in Diameter



## Wood Ball Head Pin Vise Hand Chuck 0 - 2.5 mm Capacity Collets

Item Code: AJWHPV-25



- Pin Vise Holds Micro Drill Bits from 0-3/32" (0-.100", 0-2.5mm).
- Rotating top for ease of use. includes 2 collets to adjust for various size micro drill bits and reamers.
- Pin Vise Holds Micro Drill Bits from 0-0.100" (0-2.5mm).
- Overall Length: 3" (75 mm)
- Black Oxide Hardened steel collets for superior grip on small bits
- Knurled body for turning with finger
- Wood ball swivel head for comfort while applying pressure

## Mini Light Hand Drill 4-3/4 Inches

Item Code: AJHDV-475

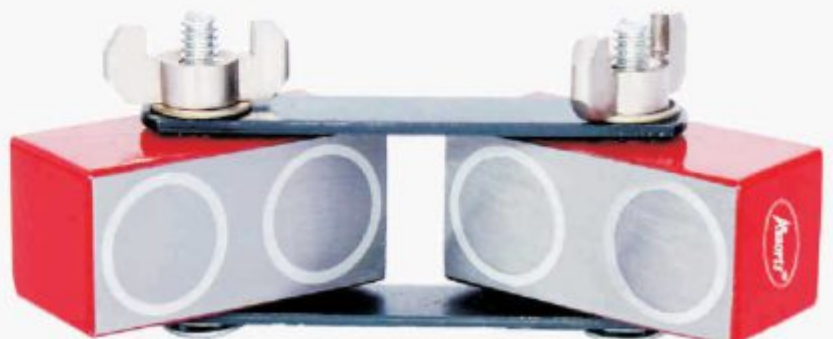
- Mini Hand Drill Vice- 4-3/4"
- Hobbyist Hand Drill for making a hole in light materials.
- Perfect for plastic boxes and most PCBs'



# DIY Tools (General Workshop Tools)

## This Section Includes:

Diamond Dressors  
Inspection Plate  
Magnetic Tools  
Punches  
Scrapers  
Spindle Tap Wrenches  
Tap & Die Handles  
Taps, Dies & Reamers  
Hand Sheers & Bending Machines





## Diamond Dressors

### Diamond Dressor with Plastic Handle

Item Code: AGDDH-XX



- Single Point Diamond Dressor with Plastic Handle to give a firm grip & protective end cap.
- Carefully selected high quality diamonds.
- Shank Diameter 1/2" x Length 8"
- Ideal for dressing operations on abrasive wheels of all types of grinding machines.

Product Code	Diamond Carat
AGDDH - 025	0.25
AGDDH - 035	0.35
AGDDH - 050	0.50
AGDDH - 075	0.75
AGDDH - 100	1.00
AGDDH - 150	1.50
AGDDH - 200	2.00
AGDDH - 250	2.50
AGDDH - 300	3.00
AGDDH - 400	4.00
AGDDH - 500	5.00

### Single Point Diamond Dressor

Item Code: AGDD-XX

- Ideal tool for dressing operations on abrasive wheels of all types of grinding machines like surface grinders, universal grinders etc.
- A single cutting edge is presented to the grinding wheel.
- Manufactured from carefully selected high quality diamonds, individually mounted in holders by means of special bonds.
- Includes protective cap & available in chrome as well ground finish.



Product Code	Shank Size ( In Inches)	Shank Size ( In mm )	Diamond Carat
AGDD-14	1-1/2" x 6"	12.5 x 150	1/4
AGDD-13	1-1/2" x 6"	12.5 x 150	1/3
AGDD-12	1-1/2" x 6"	12.5 x 150	1/2
AGDD-34	1-1/2" x 6"	12.5 x 150	3/4
AGDD-01	1-1/2" x 6"	12.5 x 150	1
AGDD-15	1-1/2" x 6"	12.5 x 150	1-1/2
AGDD-02	1-1/2" x 6"	12.5 x 150	2
AGDD-25	1-1/2" x 6"	12.5 x 150	2-1/2
AGDD-03	1-1/2" x 6"	12.5 x 150	3
AGDD-04	1-1/2" x 6"	12.5 x 150	4
AGDD-05	1-1/2" x 6"	12.5 x 150	5
AGDD-06	1-1/2" x 6"	12.5 x 150	6
AGDD-07	1-1/2" x 6"	12.5 x 150	7

## DIY TOOLS (GENERAL WORKSHOP TOOLS)

### Inspection Plate

#### Surface Inspection Plates

Item Code: AGIP-XXXX



- Cast Iron Surface Plates and Tables serve as a precision reference base for inspection, tool making, gauging, spotting, marking and layout
- Manufactured from high quality close grained cast iron.
- High degree of flatness, overall quality and workmanship make them ideal bases for mounting of mechanical, electronic and optical gauging systems

Product Code	Size of the Plate (In mm)
AGIP-1515	150 mm x 150 mm
AGIP-2020	200 mm x 200 mm
AGIP-2520	250 mm x 200 mm
AGIP-2525	250 mm x 250 mm
AGIP-3030	300 mm x 300 mm
AGIP-4040	400 mm x 400 mm
AGIP-4530	450 mm x 300 mm
AGIP-4545	450 mm x 450 mm
AGIP-6045	600 mm x 450 mm
AGIP-6060	600 mm x 600 mm

### Magnetic Tools

#### Magnetic Pots

Item Code: AMP-1003

- These have many applications like Magnetic Fastening, holding Maps etc.
- Has a hole tapped with 1/4" (20 TPI)
- Comes with plated cover on the Magnet.



### Magnetic Tools

#### Magnetic Link

Item Code: AML-1002

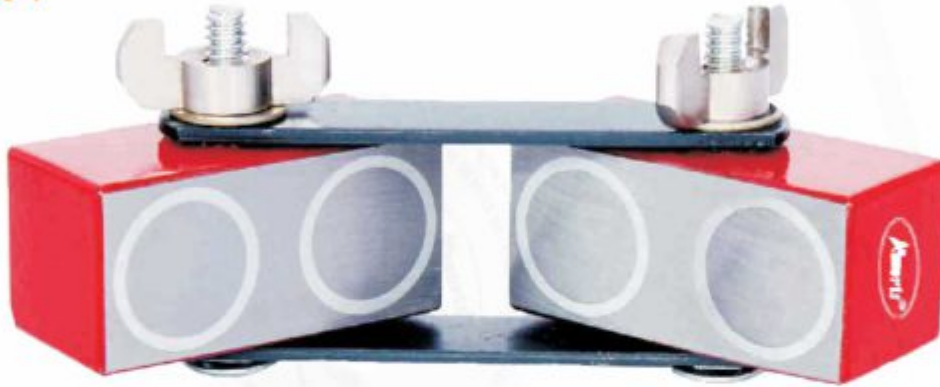


- Can be set at any angle by adjustment and locking of wing nut.
- Each Block is 2" x 1" x 1". Overall Length 4-5/8" and Overall Width 2"

## DIY TOOLS (GENERAL WORKSHOP TOOLS)

### Welders Magnetic Link Clamp

Item Code: AMQC-4



- Widely used for Holding & Welding purpose.
- Can be set at any angle by Size 4" x 2- 5/8" adjustment & locking of the wing nut.
- Each Block measures 2" x 1" x 1". Overall length & width is 4 -5/8" x 2"

### Magnetic Tools

#### Carbide Tip Scriber with Magnetic Head

Item Code: AMEEP-06

- Carbide Tip to scribe even on hardest of the material.
- It can be hold in a pocket too by removing the carbide tip and put back again in the pen after reversing its sharp edge.
- Knurled Body for an excellent grip.



**ASSORTS'S  
BEST SELLER**

### Adjustable Scraper & Deburring Tool

Item Code: AGASD-4.5



- Hardened high speed steel blades, adjustable for best suited working length.
- Triangular Blade profile.
- Bull nose collet face serves as a non-marring edge guide.
- Good balanced, & comfortable hand grip ,4.5" length.



## DIY TOOLS (GENERAL WORKSHOP TOOLS)

### Magnetic Base with Safety Shield

Item Code: AGEMS-XXXX



- Helps preventing accidents.
- The magnet base grips both flat as well as round surfaces well.
- Suits to lathes, grinders, shapers etc.
- Comes with a crystal clear flat shield.
- Shield swivels 360 degrees and locks in place.

Product Code	Size of the Flat Shield	
	( In Inches )	( In mm )
AGEMS-0608	6" x 8"	150 x 200
AGEMS-0810	8" x 10"	200 x 250
AGEMS-1012	10" x 12"	250 x 300
AGEMS-1216	12" x 16"	300 x 400
AGEMS-1620	16" x 20"	400 x 500

### Misc. Hand Tools

#### 3 Inches Hollow 3 Square Scraper

Item Code: AGEHS-75

- Used for removing excess solder, smoothing, cleaning and deburring metals, prior and after soldering.
- Blade length is 3" (75 mm)
- Can be re-sharpened on a bench stone.
- Mounted on a hardwood handle.



#### Machinist's Triangular 4 Inch (100 mm) Blade Scraper Deburring Tool

Item Code: AGEHS-100



- Quality Scraper & Deburring Tool With Wooden Handle For Easy Gripping
- Provided With A Triangular Cross Sectional Shape Hardened & Sharp Blade Of 4" Inches Length (excluding Handle)
- Very Useful Hand Tools For Scraping And Deburring, Needed By All The Machinists
- Easy Wooden Handle Gripping As Well As Non Sharped Black Painted Blade For Soft Hand Scraping

## Tee-Slot Cleaner

Item Code: AGTSC-150



- T-slot cleaner allows for easy removal of chips from machine slots.
- Made of steel for durability and long life.
- Black Epoxy finish.
- All customised and standard sizes are available.

## Punches

### Centre Punch Set of 5 Pcs.

Item Code: AGCP-5SS

- Extremely good quality made from fine tool steel, a centre punch set of 5 Pcs.
- Hardened & tempered for good performance & long life.
- Knurled body for better grip.



Prod. Code	Size of Point		OAL		Square Head Size	
	Inch	mm	Inch	mm	Inch	mm
AGCP-16S	1/16	1.6	4	100	3/8	9.5
AGCP-20S	5/64	2.0	4	100	3/8	9.5
AGCP-24S	3/32	2.4	4	100	3/8	9.5
AGCP-36S	9/64	3.6	4	100	3/8	9.5
AGCP-40S	5/32	4.0	4	100	3/8	9.5
AGCP-5SS	A set of above 5 Punches					
AGCP-32S	1/8	3.2	4	100	3/8	9.5
AGCP-48S	3/16	4.8	4-1/2	115	7/16	11.0
AGCP-63S	1/4	6.3	5	125	9/16	14.0

## Long Drive Roll Pin Punch Set of 9 Pcs

Item Code: AGLDRPP-09



- Set of 9 Pcs Roll Pin Long Drive Pin Punch Set in capacities- 1/16", 5/64", 3/32", 1/8", 5/32", 3/16", 7/32", 1/4" & 5/16".
- Knurled Body for excellent Grip & superb grind finish.
- Even the finest pin in the set has a half ball round tip which has a very technical application & highlight of this set.

## DIY TOOLS (GENERAL WORKSHOP TOOLS)

### Punches

Taper Pin, Parallel Pin & Chisel Punch Set of 13 Pcs.

Item Code: AGCPB-125



- Set of 14 Pcs consists of
- 4 Taper Punches: 3/32" x 5-1/4", 1/8" x 5-3/4", 5/32" x 6", 3/16" x 6-1/4", 1/4" x 6-3/4"
- 5 Flat Chisels- 1/4", 3/8", 1/2", 5/8", 3/4"
- 4 Pin Punches - 3/32", 1/8", 5/32", 3/16"
- 1 Pc- Centre Punch

### Centre Punch Brass

Item Code:AGCPB-125



- 05" Long & 1/2" Diameter Brass Automatic Center Punch Spring Loaded Auto Mark Hole with chrome plated tip.
- High tension spring in Body.
- Knurled handle for sure grip.
- Automatically strikes surface with a powerful spring action when pressed.

### WAD Punch Set

Item Code: AGWPS-10



- Made of High Grade Alloy Steel
- Self Centering Holder,
- Interchangeable Punches, which are heat treated to harden & then ground for sharpness and durability which gives you a fine cutting edge
- Ideal to punch holes in Rubber, Felt, Leather, Plastic etc.
- The Punches covers a size range from 5- 32 mm which includes 5,6,8, 10,12.5, 16,20, 25& 32 mm



## DIY TOOLS (GENERAL WORKSHOP TOOLS)

### Letter & Figure Punches

Item Code: AGLFP-36.X



- Made of Carbon Steel
- Individual Set of letter consists of 27 Punches (A-Z) & Individual Set of Figures consists of 9 Punches (0-8 & Same punch for 6-9 as can be used Inverted)
- Combination Sets includes Letter & Figure Punch both.
- Nice auto Black Finish & are supplied in Plastic Case.

Prod. Code	Prod. Code	Prod. Code	Size	Size
Letter Punch Set	Figure Punch Set	Combination Set	(Inch)	(mm)
AGLP1.16	AGFP1.16	AGLFP1.16	1/16"	1.6
AGLP3.32	AGFP3.32	AGLFP3.32	3/32"	2.4
AGLP1.80	AGFP1.80	AGLFP1.80	1/8"	3.2
AGLP5.32	AGFP5.32	AGLFP5.32	5/32"	4.0
AGLP3.16	AGFP3.16	AGLFP3.16	3/16"	4.8
AGLP1.40	AGFP1.40	AGLFP1.40	1/4"	6.3
AGLP5.16	AGFP5.16	AGLFP5.16	5/16"	8.0
AGLP3.80	AGFP3.80	AGLFP3.80	3/8"	9.5
AGLP1.20	AGFP1.20	AGLFP1.20	1/2"	12.7

### Long Drive Pin Punch Set of 5 Pcs

Item Code: AGLDP-05

- Set of 5 long drive Punches of Pin sizes: 1/8", 3/16", 1/4", 5/16" and 3/8".
- The working end of the punches are hardened & long enough to reach to deeply set pins in restricted area.
- Carbon steel construction
- Black oxide finish to resist corrosion
- Knurled handle for a better grip.



### Automatic Center Punch Hand Tool For Metal Punch-Plastic Head

Item Code: AGACP-1CAP



- Automatic Center Punch
- HSS Steel Pin- Hardned & Ground
- Plastic Head for Easy Grip and Control.

## DIY TOOLS (GENERAL WORKSHOP TOOLS)

### Punches

#### Long & Short Drive Pin Punch Set of 13 Pcs

Item Code: AGLSPP-14



**ASSORTS's  
BEST SELLER**

- Set of 5 long drive Punches of sizes: 1/8", 3/16", 1/4", 5/16", 3/8" & 8 Short drive pin punch set of sizes: 1/16", 3/32", 1/8", 5/32", 3/16", 7/32", 1/4" & 5/16".
- Carbon steel construction
- Black oxide finish to resist corrosion
- Knurled handle for a better grip.

#### Set of 2 Automatic Centre Punches

Item Code: AGACP-2

- Hand Pressure alone will operate this surface impacting & marking device.
- Hardened & Ground Punch Point.
- No Hammer is required.
- Point can be easily removed for re-sharpening or replacement.



#### Pen Type Adjustable Force Automatic Centre Punch Tool

Item Code: AGACP-E1



- For indenting the work-piece prior to drilling without the need for hammering.
- Delivers a punch when hand pressure is applied to knurled head.
- One handed operation.
- Adjustable force upto 13 kgs simply by the knurled Cap on the head.
- Pen Type Holder & Epoxy Black finish for a Rust free life.
- Hardened & Ground Alloy Steel Pin of Hardness 60 +/-2 HRC
- Knurled body for a firm grip to avoid any slippage
- Length: 120 mm



## DIY TOOLS (GENERAL WORKSHOP TOOLS)

### Round Head Center Punch Set

Item Code: AGCP-5RS



- Extremely good quality made from fine tool steel, a centre punch set of 5 Pcs.
- Hardened & tempered for good performance & long life.
- Knurled body for better grip.

**ASSORTS'S  
BEST SELLER**

Prod. Code	Size of Point		OAL	
	Inch	mm	Inch	mm
AGCP-16R	1/16	1.6	4	100
AGCP-20R	5/64	2.0	4	100
AGCP-24R	3/32	2.4	4	100
AGCP-36R	9/64	3.6	4	100
AGCP-40R	5/32	4.0	4	100
AGCP-5RS	A set of above 5 Punches.			
AGCP-80R	5/16	8.0	4	100
AGCP-32R	1/8	3.2	4	100
AGCP-44R	11/64	4.4	4	100
AGCP-48R	3/16	4.8	4-1/2	115
AGCP-63R	1/4	6.3	5	125
AGCP-95R	3/8	9.5	6	150

### Ejecting Drill Drift

Item Code: AGEDD-X

- Very useful item for removing taper shank drills from sleeves or sockets.
- Hardened & tempered all over
- Supplied in Black Oxidised Finished.

Prod. Code	Drift No.	Suitable for Morse Taper
AMEDD-1	1	MT-1
AMEDD-2	2	MT-2
AMEDD-3	3	MT-3
AMEDD-4	4	MT-4
AMEDD-1234	1,2,3 & 4	4 Pc.set of Drift 1,2,3 & 4



### Optical Punch

Item Code: AGOPS-5

**ASSORTS'S  
BEST SELLER**



- Layout and Drill Hole Patterns Easily & Accurately

Set Contains:

- Precision Guide Base with scratch protection.
- Two Spotting Lens one with center dot and circle, & other one with cross-hair target. These spotting lens magnify for easy alignment with a mark.
- 60° and 120° Center punches made of hardened tool steel.
- Comes complete in a fitted wooden case.



## DIY TOOLS (GENERAL WORKSHOP TOOLS)

### Engineers Bell Punch For Finding Centre on a Round Bar

Item Code: AMEBP-35

- Very useful in finding Centre of a Round Bar very quickly, very accurately.
- The Punch is hardened to hardness of 55+/-2HRC & precisely ground.
- Its quite simple to use, Just put it on the round bar and punch it to find its centre, It can find centre of a round bar upto 35 mm diameter. Really helpful when you want to drill any round piece and needs to find its centre.



ASSORTS'S  
BEST SELLER

### Spindle Tap Wrenches

#### Piloted Type Spindle Tap Wrench

Item Code: AGPTW-110.X

- Used for threading a drilled hole manually at one machine location, without actually moving the work piece.
- Tapping accessory for drill presses & lathes.
- Hardened & tempered jaws.
- Ensures identical centerline of the tap & the drilled hole.

Product Code	Tap Capacity (Inches)
AGPTW-110.A	1/16 - 1/4
AGPTW-110.B	1/4 - 1/2
AGPTW-110.S	Set of above 2 Sizes



ASSORTS'S  
BEST SELLER

### Machine Type Tap Aligner

Item Code: AGTA-012



- Provides sensitive feel for hand-tapping
- small holes on milling machines, drill presses and lathes.
- Starts with every hole straight and prevents tap breakage.
- Tap Capacity: 0-12 mm
- Shank Diameter: 3/8"
- Handle Diameter: 1"

## Punches

### T-Type Ratchet Spindle Tap Wrench

Item Code: AGRTW-125.X



- High Precision Tap Wrench with reversible ratchet action by changing the position of upper knob.
- Jaws are hardened & tempered.
- Shiny Ground Finish.

Prod. Code	Tapping Capacity	
	Inch	mm
AGRTW-125.A	1/16 - 5/32	1.5 - 4.0
AGRTW-125.B	5/32 - 1/4	4.0 - 6.0
AGRTW-125.C	1/4 - 1/2	6.0 - 12.0
AGRTW-125.S	A set of above 3 Sizes	

## Tap Extensions

Item Code: AGETE-XXX

- Eliminates needs for expensive, hard to get extension taps.
- Attractive ground finish with knurled grip chuck.

Prod. Ref	Length		Tap Capacity
	Inch	mm	
AGETE-185	7-1/4	185	No. 0 to 12 Inch
AGETE-280	11	280	No. 12 to 1/2 Inch
AGETE-2S	A Set of 2 Pc. consisting of above.		



### Ratchet Type Tap Wrench with Interchangeable Heads

Item Code: AGRTW-2PC



- High Quality Ratchet Tap Wrench with Interchangeable Heads to accommodate different capacities of tap sizes
- Ratchet action at 3 positions: forward, reverse (backward) & lock (direct) engagement in neutral position
- Ideal for holding Taps, reamers, screw extractor, or any other such small hand turned tools.
- Self centering steel jaws provide a positive grip on the holding tool.
- Ideal to use in confined area with quite ease.
- Chrome plate body. Excellent finish
- Size range of 1st Head: M3 to M8 &
- Size range of 2nd Head: M5 to M12

## DIY TOOLS (GENERAL WORKSHOP TOOLS)

### 3 Piece T-Handle Tap Wrench Set

Item Code : AGTTW-3S

ASSORTS'S  
BEST SELLER



- Set of 3 Pieces quality made t-type tap wrenches with hardened & tempered steel jaws.
- The knurled cap on the jaws gives you the freedom to tighten the jaws to grip the tap, reamer, drill like a vice for a wide variety of applications.
- Jaw Opening ranges from 1/16" to 5/32", 5/32" to 1/4" & 1/4" to 1/2" in the 3 pieces set respectively.

### Cam Lock T-Tap Wrench

Item Code : AGTLW-312

- Quality robust design T-Handle Tap Wrench for handling extreme torque, & principally based on a revolutionary cam lock system.
- Wide range of Tap holding capacity from 1/8" to 1/2" (M3 to M12) through a double size collet inside.
- Can also be used as a hand drill for sizes 1/8" - 5/16"



#### HOW TO USE :

- Position the T-handle parallel to the body of the tap wrench.

Loosen the knurled nut, hold the desired tap & then re-tighten tighten the nut again.

Reposition the T-handle 90° to the body as it was during first step, now the cam has locked the tap securely in place., which will never let the tap fall off while working.

To take out/ change the tap, just turn the T-handle parallel to the body as done in 1st step and the tap can be released easily.

### Tap & Die Handles

#### Round Die Stock Handles

Item Code : AGRDH-XXX.X



- Sturdy Die Handle to hold Round Dies. The 3 screws ensure that the Die has been holded firmly & does not rotate along during threading.
- Body Painted & handles are ground finish nickel bright finish. The knurling at rear ends of handle ensures great gripping.

Prod. Code	Die Dia (Inches)	OAL (inches)
AGRDH-113.A	5/8"	5-1/2"
AGRDH-113.B	13/16"	6-1/2"
AGRDH-113.C	1"	8-1/2"
AGRDH-113.D	1-5/16"	10"
AGRDH-113.E	1-1/2"	12"
AGRDH-113.F	2"	15"
AGRDH-113.G	2-1/2"	19"
AGRDH-113.H	3"	22"
AGRDH-113.I	3-1/2"	24"
AGRDH-113.J	4"	29"
AGRDH-113.K	5"	33"



### Self Aligning Tap & Reamer Holder

Item Code : AGTRH-02



- Eliminates tap & reamer breakage.
- Holds tool true perfect alignment.
- Base guide has two 120 Degree Vees for round objects.
- Hardened & replaceable jaws.
- Set consists of tapping guide, tap holder & jaw A for capacity 1/4" / M8 Tap and jaw B for 1/4"-1/2" / M6-M12 Tap.

### Tap Guide- Knurled Body

Item Code : AGTG-127

- Facilitates straight tapping everytime.
- Knurled for easy handling.
- Hardened tension pin of 3/16" diameter.
- Sank Diameter 1/2" (i.e 12.7 mm)
- Spring loaded mechanism.



### Tap Guides

Item Code : AGTG-127 & 128



**ASSORTS'S  
BEST SELLER**

- Facilitates straight tapping everytime.
- Sank Diameter 1/2" (i.e 12.7 mm)
- Spring loaded mechanism.

DIY TOOLS (GENERAL WORKSHOP TOOLS)

Adjustable Tap & Reamer Wrench

Item Code: AGTRW-XXX



- Used for holding taps & reamers where there is enough room for hand rotation.
- Body made from high quality steel.
- Jaws are hardened.

Prod. Code	Capacity	OAL
AGTRW-169	1/16" - 1/4"	169 mm
AGTRW-220	3/32" - 3/8"	220 mm
AGTRW-276	5/32" - 1/2"	276 mm
AGTRW-350	1/4" - 3/4"	350 mm
AGTRW-435	5/16" - 1"	435 mm
AGTRW-540	3/8" - 1-1/8"	540 mm
AGTRW-625	1/2" - 1-3/8"	625 mm

OAL- Overall Length

New Tap Wrench Holds Metric Taps of Sizes 3 - 10 mm

Item Code:AGETW-310

- Made from Tool Steel, precisely grounded for a bright nice finish.
- New Solid Design Tap Wrench, holds Metric Taps of sizes 3 mm - 10 mm ( 1/8" to 3/8")
- Knurled Handle for a better grip.
- No seperate loose jaws like any other ordinary Tap wrench.  
This will give a better long life to this tool.



Conduit Threading Stock, Die & Guide Set- 20 & 25 mm

Item Code:AGCDS-2



- Conduit Die Set includes a Die Stock & 1 Pc. each of M20 & M25 threading Dies and guides to cover the sizes shown.
- Stocks and Dies both are of high quality steel for longer performance.
- For cutting Metric conduit threads.

## Taps, Dies & Reamers

### Threading Die

Item Code: AGRHD-STD



- Our extensive range of Threading Round Dies & Hexagonal Die Nuts are manufactured from high quality alloy steel grade En31.
- Hardened & Tempered to 58 +/-2 HRC.
- Available in all International sizes & thread standards like BSW, BSF, UNF, UNC, BSB, Metric, BSP, NPT etc.
- Customised sizes can also be provided

### Taps

Item Code: AGTT-STD

- Our extensive range of Threading Taps are manufactured from high quality alloy steel grade En31.
- Hardened & Tempered to 58 +/-2 HRC.
- Available in all International sizes & thread standards like BSW, BSF, UNF, UNC, NbBSB, Metric, BSP, NPT/ BSPT, Conduit, etc.
- Customised sizes can also be provided



### Carbon Steel Hand Adjustable Reamers (Economical)

Item Code: AGAHR-XXX



- Used for light cut, repair work, removing burs, enlarging holes or maintaining a common size.
- Each reamer expands to the smallest size of the next larger size.  
Can be hand operated by using wrenches.
- The size can be adjusted by moving the blades in tapered slots by means of loosening one nut and tightening other.
- Blades are hardened and ground.



## DIY TOOLS (GENERAL WORKSHOP TOOLS)

### Taps, Dies & Reamers

#### HSS Adjustable Hand Reamer (Premium)

Item Code: AGHHR-XX



- Extremely useful precision tools for any engineering or auto repair shop.
- Blades are made from High Speed Steel, hardened 60+/-2 HRC & relief ground.
- Our range of 16 sizes cover diameters ranging from 3/8" to 2-7/32" ( 9.5 mm to 56.35 mm)
- Ideal to use on Steel or Non-ferrous metals.
- Reamers expand by loosening one adjusting nut & tightening the other.

Prod. Code	Type	Range		OAL	
		Inch	mm	Inch	mm
AGHHR-05	H1	3/8 - 13/32	9.5 - 10.3	4-3/4	120.5
AGHHR-06	H2	13/32 - 7/16	11.11 - 11.9	5	125
AGHHR-07	H3	7/16 - 15/32	13.5 - 15.0	5-1/4	133
AGHHR-08	H4	15/32 - 17/32	11.9 - 13.5	5-1/2	140
AGHHR-09	H5	17/32 - 19/32	13.5 - 15.0	5-3/4	146
AGHHR-10	H6	19/32 - 21/32	15.0 - 16.6	6-1/2	165
AGHHR-11	H7	21/32 - 23/32	16.6 - 18.25	6-3/4	171
AGHHR-12	H8	23/32 - 25/32	18.25 - 19.8	7	175
AGHHR-13	H9	25/32 - 27/32	19.8 - 21.4	7-3/8	187
AGHHR-14	H10	27/32 - 15/16	21.4 - 23.8	8	200
AGHHR-15	H11	15/16 - 1-1/16	23.8 - 26.98	9	225
AGHHR-16	H12	1-1/16 - 1-3/16	26.98 - 30.16	10	250
AGHHR-17	H13	1-3/16 - 1-11/32	30.16 - 34.1	11	275
AGHHR-18	H14	1-11/32 - 1-1/2	34.1 - 38.1	12	300
AGHHR-19	H15	1-1/2 - 1-13/16	38.1 - 46.0	14	350
AGHHR-20	H16	1-13/16 - 2-7/32	46.0 - 56.3	16	400

#### Repairman's Taper Reamer

Item Code: AGRTR-XXX

- Manufactured from Carbon Steel.
- Useful in finishing & De-burring the holes.
- Heat treated for extra strength.

Prod. Code	Range	
	Inch	mm
AGRTR-140	1/8 to 1/2	3 to 12.7 mm
AGRTR-141	1/8 to 5/8	3 to 16 mm
AGRTR-142	5/32 to 7/8	4 to 22 mm



#### Universal Machine for Manual Bending of Metal Bar, Tube, Pipe

Item Code: AGEBM-08

**ASSORTS'S  
BEST SELLER**



- Quality Universal Hand operated machine for bending metal bars, tubes & pipes.
- An Ideal Machine for Multi-forming Curves, Circles & Coils designs in Wire/ Rod up-to 5/16" (~approx 8 mm size) & flats of 1" x 1-1/8" dimensions.
- Machine Kit Includes: 4 Interchangeable Circular Dies of 25, 30, 35 & 40 mm on 2 Pin of 12.5 mm diameter.
- These circular & Sharp Edge Dies gives the freedom of making different curve sizes of a same design. It also has 3 pins to works as stoppers, or torque pins while bending and forming different designs.

# Best Sellers-Best Combos

## This Section Includes:

- Chucks Mounted on Rotary Tables
- Milling Indexing Kit
- Rotary Table on the Lathe Vertical
- Vices mounted on Lathe Vertical Slides
- Vices Mounted on the Rotary Tables
- Engineer Starter Kits
- ER Collets on Rotary Table





## BEST SELLERS-BEST COMBOS

### 65 mm 3 Jaw Self Centering Chuck on 75 mm (3 Inches) Rotary Table

Item Code: ABSCR-65.3R



- A very high quality low profile 75 mm (3 Inches) Rotary Table with 4 slots supplied with a 3 jaw Self Centering 65 mm Lathe Chuck for Milling Machine.
- Overall height of the table is 42 mm (without chuck) & 95 mm (with Chuck)
- The worm gear ratio is 36: 1 which means 1 rotation of handle will turn the table by 10 degrees.
- The hand wheel is in 10 min division and can be set at 0.
- It is supplied with a Mounting Back plate, a set of T-nuts apart from Chuck Mounting on the Rotary Table.
- The table can be mounted both horizontally and vertically.
- An excellent finish quality product with wrinkle paint for a long life !!

### 70 mm 4 Jaw Independent Chuck on 100 mm Rotary Table

Item Code: ABSC4R-70.4

#### Description of 4" (100 mm) Rotary Table

- Designed for smaller milling machines.
- Table diameter 100 mm
- Table is graduated 360 Degrees.
- Worm Gear Ratio -1:36, which means that the 1 handle rotation shall turn the table by 10 Degrees.
- Center Height in vertical position: 2-1/16" (50 mm approx)
- Hand wheel is graduated in divisions of 10 min & can be set to zero.
- Can be mounted both in Horizontal & vertical position.

#### Description of 4" (100 mm) Rotary Table

- A high Quality 4 Jaw Independent chuck, the body of which is made from SG Iron & Jaws are of Tool steel hardened & ground.
- Same Jaws are reversible as well.
- Supplied with a mounting back plate & fixing tee nuts with screws.
- The Back plate has been drilled in a manner that it will fit to a 3 slot or a 4 slot rotary table.
- The chuck mounting is standard Unimat Thread M14 x 1





### Chucks Mounted on Rotary Tables

#### 80 mm 4 Jaw Independent Chuck on 3 Inches Rotary Table

Item Code: **AMTC-RRT3C80-4**



- A very high quality low profile 3 Inches ( 80 mm) Rotary Table with 4 slots supplied with a 4 jaw Independent 80 mm Lathe Chuck for Milling Machine.
- Overall height of the table is 1 5/8" (without chuck)
- The worm gear ratio is 36: 1 which means 1 rotation of handle will turn the table by 10 degrees.
- The hand wheel is in 10 min division and can be set at 0.
- It is supplied with a Mounting Back plate, a set of T-nuts apart from Chuck Mounting on the Rotary Table.
- The table can be mounted both horizontally and vertically.
- An excellent finish quality product with wrinkle paint for a long life !!

#### 80 mm 4 Jaw Independent Chuck on 3 Inches Tilting Rotary Table

Item Code: **AMTC-TRT3C80-4**



- A very high quality 80 mm (3 Inches) Rotary Table with 4 slots supplied with a 4 jaws 80 mm Independent Lathe Chuck for Milling Machine.
- The table can tilt and lock into any position from 0 to 90 degrees.
- The worm gear ratio is 36: 1 which means 1 rotation of handle will turn the table by 10 degrees.
- The hand wheel is in 10 min division and can be set at 0.
- It is supplied with a Mounting Back plate, a set of T-nuts apart from Chuck Mounting on the Rotary Table.
- The table can be mounted both horizontally and vertically.
- An excellent finish quality product with wrinkle paint for a long life !!

### Chucks Mounted on Rotary Tables

#### 65 mm 3 Jaw Self Centering Chuck on 75 mm (3 Inches) Tilting Rotary Table

Item Code: ABSCR-65.3



**3" (75 mm) Tilting Rotary Table with a 65mm- 3 Jaw Self Centering Lathe Chuck for Milling Machine**

**This Whole Package Includes below : -**

- 1 Pc. 3" / 80mm Tilting Rotary table
- 1 Pc. of a high quality 65 mm 3 Jaw self centering Chuck
- 1 Pc. of a back plate which has holes in a manner that it can be fitted on to a 3 slot as well 4 slot Rotary table.
- 3 set of T nut to clamp / tighten the Back Plate with the Tee slots of the Rotary Table.

#### DETAILS ABOUT THE ROTARY TABLE

- High Precision Mini Rotary Table 80mm (3 Inches)
- Overall Height in a non tilting position is around 55 mm
- Table is graduated 0- 360 degrees in 5 degree divisions.
- Rotating handle is graduated 0- 10 degrees in 5 minutes divisions
- Table can tilt upto any position 0 to 90 degrees and locked at any position as per the requirement.
- It's a superb high quality precision item having gunmetal gear and EN8 (form of steel) worm combination to have a minimum wear and tear to give a long life with negligible play to this product.
- Minimum possible friction means long life and best performance !!

#### 150 mm Chuck mounted on HV6 Rotary Table

Item Code: ABSC6R-150.4

#### Description of HV6 Rotary Table:

- Rotary Table Diameter :150 mm (6")
- Overall Height without chuck: 80 mm ( 3-1/4")
- Centre Height in Vertical Position: 105 mm
- Worm- Gear Ratio- 1:90, which means that the 1 handle rotation shall turn the table by 4 Degrees.
- Table Graduated 360 Degrees, Resettable Dial & Handwheel graduated in seconds. Vernier scale is calibrated to 10 seconds.
- Centre Bore of the Table: 2 MT
- 2 Oiling Points for a direct lubrication of the Table for longer life & better performance.
- Can be clamped in Horizontal as well Vertical Position.

#### Description of the 150 mm -4 Jaws Independent Chuck

- A low profile chuck of diameter 150 mm (same as the table diameter) which can be fitted without any Back Plate to the Table.





**Chucks Mounted on Rotary Tables****65 mm 3 Jaw Self Centering Chuck on 4 Inches (100 mm ) Tilting Rotary Table****Item Code: AMTC-TRT4C65****4" (100 mm) Tilting Rotary Table with a 65mm- 3 Jaw Self Centering Lathe Chuck for Milling Machine****This Whole Package Includes below : -**

- 1 Pc. 4" / 100 mm Tilting Rotary table
- 1 Pc. of a high quality 65 mm 3 Jaw self centering Chuck
- 1 Pc. of a back plate which has holes in a manner that it can be fitted on to a 3 slot as well 4 slot Rotary table.
- 3 set of T nut to clamp / tighten the Back Plate with the Tee slots of the Rotary Table.

**Description of the 4" Tilting Rotary Table:-**

- Features to tilts between 0- 90 Degrees & can be locked at any position.
- Table diameter 100 mm
- Table is graduated 360 Degrees.
- Worm Gear Ratio -1:36, which means that the 1 handle rotation shall turn the table by 10 Degrees.
- Center Height in vertical position: 2-5/8" (66 mm approx) without the chuck.
- Hand wheel is graduated in divisions of 10 min & can be set to zero.
- Can be mounted both in Horizontal & vertical position

**100 mm 3 Jaw Self Centering Chuck on 100 mm (4 Inch) Rotary Table****Item Code: ABSC4R-100.3****Description of 4 Inches (100 mm) Rotary Table**

- Designed for smaller milling machines.
- Table diameter 100 mm
- Table is graduated 360 Degrees.
- Worm Gear Ratio -1:36, which means that the 1 handle rotation shall turn the table by 10 Degrees.
- Center Height in vertical position: 2-1/16" (50 mm approx)
- Hand wheel is graduated in divisions of 10 min & can be set to zero.
- Can be mounted both in Horizontal & vertical position.

**Description of the 100 mm-3 Jaw Self Centering Chuck**

- A high Quality 100 mm 3 Jaw Self centering chuck body made from SG Iron & Jaws are of Tool steel hardened & ground.
- A set of reversible jaws is supplied extra.
- Supplied with a mounting back plate & fixing tee nuts with screws. (though the picture is not showing the same)
- Designed to fit our 3 or 4" Rotary table with either 3 or 4 slots.
- The Back plate has been drilled in a manner that it will fit to a 3 slot or a 4 slot rotary table.
- The recess of the back plate is machined perfectly to fit the recess of the chuck to avoid any play.





## Chucks Mounted on Rotary Tables

### 100 mm 3 Jaw Self Centering Chuck on HV5 Rotary Table

Item Code: ABSC5R-100.3



#### Description of the HV5 Rotary Table:

Rotary Table Diameter :127 mm (5")

Overall Height : 87 mm ( 3-7/16")

Centre Height in Vertical Position: 90 mm

- Worm- Gear Ratio- 1:72, which means that the 1 handle rotation shall turn the table by 5 Degrees.
- Tee -Slot width ( Top of the Table ) : 12 mm
- Table Graduated 360 Degrees, Resettable Dial &
- Handwheel graduated in seconds. Vernier scale is calibrated to 10 seconds.

#### Description of the 100 mm-3 Jaw Self Centering Chuck:

- A high Quality 100 mm 3 Jaw Self centering chuck body made from SG Iron & Jaws are of Tool steel hardened & ground.
- A set of reversible jaws is supplied extra.
- Supplied with a mounting back plate & fixing tee nuts with screws. (though the picture is not showing the same)
- Designed to fit our 3 or 4" Rotary table with either 3 or 4 slots.
- The Back plate has been drilled in a manner that it will fit to a 3 slot or a 4 slot rotary table.
- The recess of the back plate is machined perfectly to fit the recess of the chuck to avoid any play.

## Milling Indexing Kit

### HV4 Rotary Table, Dividing Plate & Tailstock Set

Item Code: ABSRTD-110

- Rotary Table Diameter : 110 mm (4-3/8")
- Table Height: 80 mm (3 -1/8")
- Worm Gear Ratio - 1:90, which means that 1 handle rotation shall turn the table by 4 Degrees.
- Centre Bore of the Table MT2
- Table Graduated 360 Degrees. Handwheel graduated in seconds.
- Vernier scale is calibrated to 10 seconds.
- 2 Oiling Points for a direct lubrication of the Table for longer life & better performance.
- Can be clamped in Horizontal as well Vertical Position.
- Supplied with Dividing Plate Set for Indexing & a Tailstock. So a complete Indexing mechanism.



### HV6 Rotary Table, Dividing Plate & Tailstock Set

Item Code: **ABSRTD-150**



- Rotary Table Diameter :150 mm (6")
- Overall Height : 80 mm ( 3-1/4")
- Centre Height in Vertical Position: 105 mm
- Worm- Gear Ratio- 1:90, which means that the 1 handle rotation shall turn the table by 4 Degrees.
- Table Graduated 360 Degrees, Resettable Dial &
- Handwheel graduated in seconds. Vernier scale is calibrated to 10 seconds.
- Centre Bore of the Table: 2 MT
- 2 Oiling Points for a direct lubrication of the Table for longer life & better performance.
- Can be clamped in Horizontal as well Vertical Position.
- Supplied with Dividing Plate Set for Indexing & a
- Tailstock for a total Indexing solution.
- Safety & Operation manual is also supplied.

### Rotary Table on the Lathe Vertical Slides

Rotary Table Fitted on Vertical Slide

Item Code: **ABSERV-98.2**

#### Specifications of Rotary Table:-

- This Rotary Table has a Table diameter of 98 mm and fits into the myford vertical slide directly.
- Base dimension of the table is 100 mm x 100mm x 55 mm .
- Table is graduated 0- 360 degrees and works on a ratio of 60: 1, which basically means that 1 handle rotation would turn the table by 6 degrees.

#### Specifications of the Vertical Slide:-

- This is an accessory item compatible for Myford ML7 Lathes and other smaller mini lathes.
- Table size is 125 mm x 100 mm.
- It has a reading bush at the handle for calculating accurate travel of the bed and hence a precise job.
- The thread comes both in metric as well as Imperial standard as per customer's market requirements.





### Vices mounted on Lathe Vertical Slides

#### 50 mm Steel Vice Mounted on Small Vertical Lathe Slide

Item Code: ABSMSV-50



##### Small Vertical Slide Specifications:-

- This small vertical slide is designed for instant milling on Lathe machines.
- Bed Dimensions: 100 x 150 mm
- Tee- Slot width 9.5 mm
- Maximum Jaw Opening : 70 mm

##### Steel Vice Specifications:-

- The Jaws are 50mm Wide x 16 mm Deep.
- Fixing Hole Centre distance in Length x Widthwise direction is 40 mm x 25 mm respectively. It can be changed as per customer's specific requirement as well.
- Perfect to fit on a small vertical slide or any tee slotted base of any table.
- Horizontal & vertical Vee in jaw (1 Side) to hold round job.

#### 60 mm Steel Vice Mounted on Lathe Vertical Slide

Item Code: ABSVSV-60

##### Vertical Slide Specifications:-

- This is an accessory item compatible for Myford ML7 Lathes and other smaller mini lathes.
- Table size is 125 mm x 100 mm.
- It has a reading bush at the handle for calculating accurate travel of the bed and hence a precise job.
- The thread comes both in metric as well as Imperial standard as per customer's market requirements.

##### Steel Vice Specifications:-

- The Jaws are 50mm Wide x 16 mm Deep.
- Fixing Hole Centre distance in Length x Widthwise direction is 40 mm x 25 mm respectively. It can be changed as per customer's specific requirement as well.
- Perfect to fit on a small vertical slide or any tee slotted base of any table.
- Horizontal & vertical Vee in jaw (1 Side) to hold round job.





## Vices mounted on Lathe Vertical Slides

### 2 Inches (50 mm) Self Centering Vice on Lathe Vertical Slide

Item Code:ABSVS-SCV50



#### 2" (50 mm) Small Self Centering Vice:-

- The Self Centering vice allows for accurate centering of jobs automatically. Perfect to perform a same operation at varying job sizes at a single setting.
- Manufactured from high tensile seasoned cast iron with fully hardened ( 55 +/-3 HRC) and ground tool steel jaws. Rotation of the crank handle automatically adjusts workpiece to the center.
- Spindle has opposite threads for quick & precise centering & then holding of the job.
- Fully graduated 360° swivel base allows the vice to be set at any angle along the vertical axis.

Prod. Code	Jaw Width (Inch)	Jaw Width (mm)	Jaw Opening (Inch)	Jaw Opening (mm)	Jaw Depth (Inch)	Jaw Depth (mm)
AVSSC-050	2"	50	2"	50	1"	30

#### Vertical Slide Specifications:-

- This is an accessory item compatible for Myford ML7 Lathes and other smaller mini lathes.
- Table size is 125 mm x 100 mm.
- It has a reading bush at the handle for calculating accurate travel of the bed and hence a precise job.
- The thread comes both in metric as well as Imperial standard as per customer's market requirements.

Mini Vertical Slide On Z Type Angle Plate (For Direct Mounting On Mini Lathe)

Item Code: ABSMVS-ZAP



- Small Vertical Milling Slide of Base Dimension :50 x 55 mm and Sliding Table :90 x 50 mm for Bench Small Lathes Suitable for Bench Lathes upto 150 mm Swing
- Vertical Travel 40 mm, Tee- Slot width 9.5 mm Maximum & Jaw Opening : 70 mm
- Adjustable Vice Jaws & Brass Gib
- Supplied with a Z type Angle Plate. Precision ground from all sides/ faces for perpendicularity/ squareness.
- One base side of the Caste iron has 2 x Counter drills with suitable stud bolts to clamp the slide and the other has a continuous slot to fasten it through the lathe's tool post stud.



### Vices Mounted on the Rotary Tables

#### 75 mm Round Vice mounted on 75 mm Rotary Table

Item Code:ABS



#### 3 Inch (75 mm) Rotary Table's Specifications:-

- A Precision Small Rotary Table for Milling operation with Table Diameter - 3 Inches (75 mm) with 3 slots.
- Height - 47 mm
- Worm- Gear Ratio - 36:1, which basically means that 1 handle rotation shall turn the table by 10 Degrees.
- Table graduated in 360 Degrees & the scale calibrated in 5 degree increment.
- Centre Height in Vertical position is 52 mm.
- Can be used in both horizontal & vertical position.

#### Round Vice Specifications:-

- Made of high grade close grain caste Iron.
- Fits our 3" (75 mm) Rotary Tables perfectly.
- The moving jaw has V-grooves to hold Round objects.
- Again these vices are drilled in a manner that these can fit to a 3 as well 4 slot table.
- The Drills are counter bored to ensure that the fixing screws sets perfectly ensure perfect movement.

Prod. Code	Dia. of Base	Jaw Width	Jaw Depth	Jaw Opening	Height
AMRRV-080	80 mm	54 mm	20 mm	32 mm	29 mm



**Vices Mounted on the Rotary Tables****100 mm Round Vice mounted on 100 mm Rotary Table****Item Code:ABSRTV-100****Specifications of 4" (100 mm) Rotary Table:-**

- Designed for smaller milling machines.
- Table diameter 100 mm
- Table is graduated 360 Degrees.
- Worm Gear Ratio -1:36, which means that the 1 handle rotation shall turn the table by 10 Degrees.
- Center Height in vertical position: 2-1/16" (50 mm approx)
- Hand wheel is graduated in divisions of 10 min & can be set to zero.
- Can be mounted both in Horizontal & vertical position.

**Specifications of Round Vice:-**

- Made of high grade close grain cast iron.
- Designed to fit our 4" (100 mm) Rotary Tables perfectly.
- The moving jaw has V-grooves to hold Round objects.
- Again these vices are drilled in a manner that these can fit to a 3 as well 4 slot table.
- The Drills are counter bored to ensure that the fixing screws sets perfectly ensure perfect movement.

Prod. Code	Dia. of Base	Jaw Width	Jaw Depth	Jaw Opening	Height
AMRRV-105	105 mm	77 mm	21 mm	40 mm	32 mm



## BEST SELLERS-BEST COMBOS

### Rotary Table 3" (80 Mm) With Er16 & Er-20 Collet Adaptors

For Milling, Indexing, Axis Cutting Engineering Tools

Item Code:ABSCA3R-ER



- A Precision Small low profile Rotary Table for Milling operation with Table Diameter- 3 Inches (80 mm)
- Rotary Table Height in Horizontal Laid flat Position - 38 mm & 80 mm with the Collet Adaptor assembly.
- Worm- Gear Ratio - 36:1, which basically means that the 1 rotation of the handle shall rotate the table by 10 degrees
- Table scale is calibrated in 5 degree increment.
- Can be used both in horizontal & vertical position
- Supplied with a ER16 & ER 20 Collet Adapter with Fixing T nuts that can be mounted directly on the rotary table
- The base plate has a spigot extension to guide into the center of the table in order to achieve higher accuracies
- Base plate is M6 drilled in a manner that it can fit both 3 as well as 4 slot rotary table

### 4" Inches (100 mm) Tilting Rotary Table with ER Collet Adapter for Milling Machines

Item Code:ABSCA4TR-ER

- Features to tilts between 0- 90 Degrees & can be locked at any position.
- Table diameter 100 mm Table is graduated 360 Degrees.
- Worm Gear Ratio -1:36, which means that the 1 handle rotation shall turn the table by 10 Degrees.
- Center Height in horizontal flat position: 2-5/8" (66 mm approx and is 102 mm including the ER collet assembly.
- Hand wheel is graduated in divisions of 10 min & can be set to zero.
- Can be mounted both in Horizontal & vertical position
- Supplied with options of ER20 & ER-16 Collet Adapter with fixing screws
- Epoxy Black Finish for a rust free Life
- The Base plate of this adapter is such that it will fit to a 3 as well as 4 slot rotary table also.
- The other side of the base has a locating spigot of 13.9 mm , that sits in the center of Rotary Table, thus no need to dial it before use. thanks



**2 Inches / 50 mm Steel Vice Mounted on Small Tool Post Vertical Lathe Slide**

Item Code:ABSTVS-50SV

**Small Vertical Slide Specifications**

- This small vertical slide is designed for instant milling on Lathe machines.
- Can be fitted to Emco, Myford, Warco, Victory C3 Small Lathes with no modification / machining Suitable for Bench Lathes up to 150 mm Swing
- Small gib extension to hold in the quick change tool post's of the lathe.
- No need to remove the Main tool post block from the lathe to mount it on the cross slide.
- Vertical Travel 40 mm
- Base Dimension - 50 x 55 mm
- Sliding Table - 90 x 50mm
- Tee- Slot width 9.5 mm
- Maximum Jaw Opening : 70 mm

**Steel Vice Specifications**

- The Jaws are 50mm Wide x 16 mm Deep.
- Fixing Hole Centre distance in Length x Widthwise direction is 40 mm x 25 mm respectively. It can be changed as per customer's specific requirement as well.
- Perfect to fit on a small vertical slide or any tee slotted base of any table.
- Horizontal & vertical Vee in jaw (1 Side) to hold round job.

**Horizontal Vertical HV6-3 slots (150 mm) Rotary Table, Dividing Plate & Tailstock Set**

Item Code:ABSRTD-150.3S

**ASSORTS's  
BEST SELLER**



- Rotary Table Diameter :150 mm (6")- 3 slots
- Overall Height : 80 mm ( 3-1/4")
- Centre Height in Vertical Position: 105 mm
- Worm- Gear Ratio- 1:90, which means that the 1 handle rotation shall turn the table by 4 Degrees.
- Table Graduated 360 Degrees, Resettable Dial & Handwheel graduated in seconds. Vernier scale is calibrated to 10 seconds.
- Centre Bore of the Table: 2 MT
- 2 Oiling Points for a direct lubrication of the Table for longer life & better performance.
- Can be clamped in Horizontal as well Vertical Position.
- Supplied with Dividing Plate Set for Indexing & a Tailstock for a total Indexing solution.
- Safety & Operation manual is also supplied.



## BEST SELLERS-BEST COMBOS

### Starter Engineer Kit Set #1

Item Code:ABSESK-S1



- Quality Starter Tool Kit Includes 11 Hand Tools For Every Hobbyists, Machinist & Engineers
- Tool Kit Includes -1 X Center Finder, 1x Universal Multi-use Protractor Gauge, 2 X Center Squares Of Capacities 1.3" & 3" Diameters, 2 X Tap Guides, Carbide Scriber Pen, Engineer Depth Gauge, Pocket Clip Depth Gauge, 1 X Automatic Center Punch & 6" Ruler
- Supplied In A Quality Wooden Box. Each Tool Set In Styrofoam Casing.

### Starter Engineer Kit Set # 2

Item Code:ABSESK-S2

**A Quality Starter Engineer Kit, supplied in a quality wooden box set in a styrofoam solid casing.**

- The kit includes the following Items ;

- 1/. Precision 6" Try Square
- 2/. Precision 4" Try Square
- 3/. Precision 3" Try Square
- 4/. Center Square 3"/ 140 mm Blade
- 5/. Carbide Scriber Pen





**3" Inches (80 Mm ) Tilting Rotary Milling Indexing Table With Er16 & 20 Collet Adaptors**

Item Code:ABSCA3TR-ER



- A Precision Small low profile Tilting Rotary Table for Milling operation with Table Diameter- 3 Inches (80 mm), features to tilt & locked at any angle between 0-90 degrees.
- Worm- Gear Ratio - 36:1, which basically means that the 1 rotation of the handle shall rotate the table by 10 degrees
- Table scale is calibrated in 5 degree increement.
- 1 Can be used both in horizontal & vertical position
- 'Supplied with a ER16 & ER 20 Collet Adapter with Fixing T nuts that can be mounted directly on the rotary table
- The base plate has a spigot extension to guide into the center of the table in order to achieve higher accuracies
- Base plate is M6 drilled in a manner that it can fit both 3 as well as 4 slot rotary table

**4" Inch Rotary Table With Er Collet Adapter For Indexing Milling**

Item Code:ABSCA4R-ER



- Quality 4" Inches (100 mm) Rotary Table Designed for smaller milling machines.
- Table is graduated 360 Degrees. Worm Gear Ratio -1:36, which means that the 1 handle rotation shall turn the table by 10 Degrees.
- Center Height in vertical position: 2-1/16" (50 mm approx) & is 85 mm including the ER collet as assembly
- Hand wheel is graduated in divisions of 10 min & can be set to zero.
- Can be mounted both in Horizontal & vertical position.
- Supplied with an option to chose from ER20 & ER16 Collet Adaptor and fixing T nuts Bolts.

# INDEXABLE TOOLS

## This Section Includes:

Boring Bars For CNC Lathe Machine  
Turning Tool Set with Inserts



## Indexable Turning Tool Set 6 Pcs

Item Code:AITTS-6.XX

**6 Pcs. set of turning tool set supplied with carbide indexable CCMT inserts & keys**

• **Set Includes following**

- 1 Pc. - Left hand straight turning tool.
- 2 Pcs.- Right hand turning tool.
- 1 Pc. - Right hand facing tool
- 1 Pc. - Outer Threading & Straight turning tool.
- 1 Pc. - Offset Outer threading & Straight turning tool.



Supplied in a beautiful wooden box in a styrofoam casing.

Prod. Ref	Shank Size	Carbide Insert Ref
AITTS-6.06	6 mm	CCMT060204
AITTS-6.08	8 mm	CCMT060204
AITTS-6.10	10 mm	CCMT060204
AITTS-6.12	12 mm	CCMT060204

## MTJNL 2525 M16-APT Lathe Turning Tool for TNMG 1604 Inserts

Item Code:AITMTJN.X-M16



- Lathe Turning Tools for TNMG 1604 Inserts 93 Degree Left & Right hand cutting
- Shank Size 25 x 25 mm
- Qualified Width : 32 mm
- Length : 150 mm

Item Code	Shank	Qualifie Width	Length	Type	Insert
AITMTJNL-M16	25 x 25	32	150	Left Hand	TNMG 1604
AITMTJNR-M16	25 x 25	32	150	Right Hand	TNMG 1604



# INDEXABLE TOOLS

## SVVBN 2020 K16 Toolholder for Turning 20x20mm Shank with VBMT 1604 Insert

Item Code:AITVBMT-K16



- SVVBN 2020 K16 Toolholder for Turning 20x20mm Shank uses VBMT 1604 Inserts .
- Tool holders for Turning 72 Degree 30'
- Shank : 20 x 20 mm Square x 125 mm
- VBMT 1604 Inserts
- Qualified Width: 10 mm

## Indexable CNC Lathe Machine Turning Tool Holders

Item Code:AITTTH-XX.X

- Quality Indexable Lathe Right Hand Turning Tools Of Variable Shank Sizes
- Quality Special Grade Tool Steel, Which Makes Them Flexible, Hard But Not Brittle To Run Through Uneven Turning Profile As Well
- Epoxy Black Finish For A Rust Free Life. Laser Marked With Information Of Shank, Insert, Screw And Key Information



Item Code	Shank Size	Type	Insert	Key
AITTTH-08.R	8 x 8 mm Sq.	Right	CCMT06	T-08
AITTTH-10.R	10 x 10 mm Sq.	Right	CCMT06	T-08
AITTTH-12.R	12 x 12 mm Sq.	Right	CCMT09	T-15
AITTTH-16.R	16 x 16 mm Sq.	Right	CCMT09	T-15
AITTTH-08.L	8 x 8 mm Sq.	Left	CCMT06	T-08
AITTTH-10.L	10 x 10 mm Sq.	Left	CCMT06	T-08
AITTTH-12.L	12 x 12 mm Sq.	Left	CCMT09	T-15
AITTTH-16.L	16 x 16 mm Sq.	Left	CCMT09	T-15

## Indexable Boring Bar Tools

Item Code:AITBB-XX



- Quality Indexable Cnc Lathe's Boring Tools With Keys
- Special Grade Tool Steel, Which Makes Them Flexible, Hard But Not Brittle To Run Through Uneven Turning Profile As Well
- Epoxy Black Finish For A Rust Free Life.
- Laser Marked With Information Of Shank, Insert, Screw And Key Information

Code	Shank Size	Insert	Key
AITBBT-08	8 mm	CCMT06	T-08
AITBBT-10	10 mm	CCMT06	T-08
AITBBT-12	12 mm	CCMT09	T-15
AIIBBT-16	16 mm	CCMT09	T-15

# HSS Cutting & Finishing Tools

## This Section Includes:

Angle Cutters  
Countersinks Tools  
Chamfering Tools  
Finishing Tools



# HSS CUTTING & FINISHING TOOLS

## High Speed Steel (HSS) Countersink Tools

Item Code:ACFCST-XX



- HSS Quality Dovetail Single Angle cutters.
- Regular Length with 6 or more flutes
- Dovetail Cutting Angles 45° & 60°
- Same cutters are also available in M35 & M42 Steel grades as well.
- Hardness is 58- 62 HRC

Product Code	No. of Flutes	Cutter Size (Dia)	Cutter Width		Shank Dia.	OAL
			40	60		
ACFDTC-01	6	3/8"	1/8"	3/16"	3/8"	2-1/8"
ACFDTC-02	8	1/2"	5/32"	1/4"	3/8"	2-1/8"
ACFDTC-03	8	3/4"	1/4"	5/16"	3/8"	2-1/8"
ACFDTC-04	10	1"	1/4"	7/16"	1/2"	2-1/2"
ACFDTC-05	10	1-3/8"	7/16"	9/16"	5/8"	2-7/8"
ACFDTC-06	10	1-7/8"	9/16"	13/16"	7/8"	3-1/4"
ACFDTC-07	10	2-1/4"	5/8"	1-1/16"	1"	3-3/4"
ACFDTC-08	10	2-1/2"	3/4"	1-1/8"	1"	3-3/4"

**NOTE:** We can offer other customised sizes as well. Please contact us for more details.

## HSS Single Angle Chamfer Milling Cutter

Item Code:ACFSAC-XX





# HSS CUTTING & FINISHING TOOLS

## High Speed Steel (HSS) Countersink Tools

Item Code:ACFCST-XX

- Countersinks are being used to enlarge and bevel the rim of a drilled hole, so that a screw, nail, or bolt can be inserted flush with the surface.
- Available in 1, 4 & 6 flutes.
- All above measurements are in Inches
- Material is High Speed Steel.
- Hardness is 58 to 62 HRC



Product Code	Head Dia (d1) + 0.003"	Shank Dia (d2) -0.0005"	OAL (l1)	Shank Length (l2)
ACFCST-01	3/16"	3/16"	1-1/2" +/- 1/8"	---- +/- 1/16"
ACFCST-02	1/4"	1/4"	2" +/- 1/8"	---- +/- 1/16"
ACFCST-03	5/16"	1/4"	" +/- 1/8"	7/8" +/- 1/16"
ACFCST-04	3/8"	1/4"	2" +/- 1/8"	1" +/- 1/16"
ACFCST-05	1/2"	1/4"	2" +/- 3/16"	1" +/- 1/16"
ACFCST-06	5/8"	1/2"	2-3/4" +/- 3/16"	1-1/4" +/- 1/16"
ACFCST-07	3/4"	1/2"	2-3/4" +/- 3/16"	1-1/4" +/- 1/16"
ACFCST-08	7/8"	1/2"	2-3/4" +/- 3/16"	1-3/8" +/- 1/8"
ACFCST-09	1"	1/2"	2-3/4" +/- 3/16"	1-3/8" +/- 1/8"
ACFCST-10	1-1/4"	3/4"	3-3/8" +/- 3/16"	1-5/8" +/- 1/8"
ACFCST-11	1-1/2"	3/4"	3-1/2" +/- 3/16"	1-5/8" +/- 1/8"
ACFCST-12	1-3/4"	1"	4-1/4" +/- 3/16"	2" +/- 1/8"
ACFCST-13	2"	1"	4-3/8" +/- 3/16"	2" +/- 1/8"

### NOTE :

- Comes in 60°, 82° & 90° counter angles.
- Other material grades like M35, M42 are also available. Please contact us for more details.
- We do provide customised designs/ size specifications as well.

## 5 Pcs Set Lathe Mill Center Drill Countersink Tool Bits for Soft Iron, Aluminium, Carbon Steel, Brass, Wood

Item Code:ACFCST-5S

- Fine Quality M2 Grade HSS 5 PCS Set of Countersinks Tool Bit.- Sizes 1, 2, 3, 4 and 5, 60° tip angles.
- Drill accurate center holes in material prior to turning, or use as a starter bit for accurate holes.
- Can be used to make conical holes for a lathe center in order to make a starting point for a standard twist drill.
- Designed to prevent the twist drill from walking, as well as for producing center holds in components or work pieces with require machining between centers.
- Suitable for all Kinds of Materials: Metal, Alloy, Copper, Iron, Wood, Aluminum and soon.



This image shows a single sheet of white paper with horizontal ruling lines. The lines are evenly spaced and run across the width of the page. There are no margins, text, or other markings on the paper.



# *Our* Facility At A Glance







**Factory :** F-106, SECTOR-3, BAWANA INDUSTRIAL AREA  
NEW DELHI-110039 (INDIA)

**Mobile :** +91-9650295134 // +91-9315699962

**E-mail :** sales@assortsmachinetools.com, praveen.mishra@assortsmachinetools.com

**[www.assortsmachinetools.com](http://www.assortsmachinetools.com)**